



Numero di inventario: 22649

Macchina per elettroerosione a filo
AGIE AGIECUT VERTEX
AGIEVISION
2007



Dati tecnici

Dimensioni massimo del pezzo:

Lunghezza	300 mm
Larghezza	200 mm
Altezza	80 mm
Peso mass. su tavola	35 kg
Corsa longitudinale (asse-X)	220 mm
Corsa trasversale (asse-Y)	160 mm
Corsa verticale (asse Z)	100 mm
Taglio conico +/-	3 °

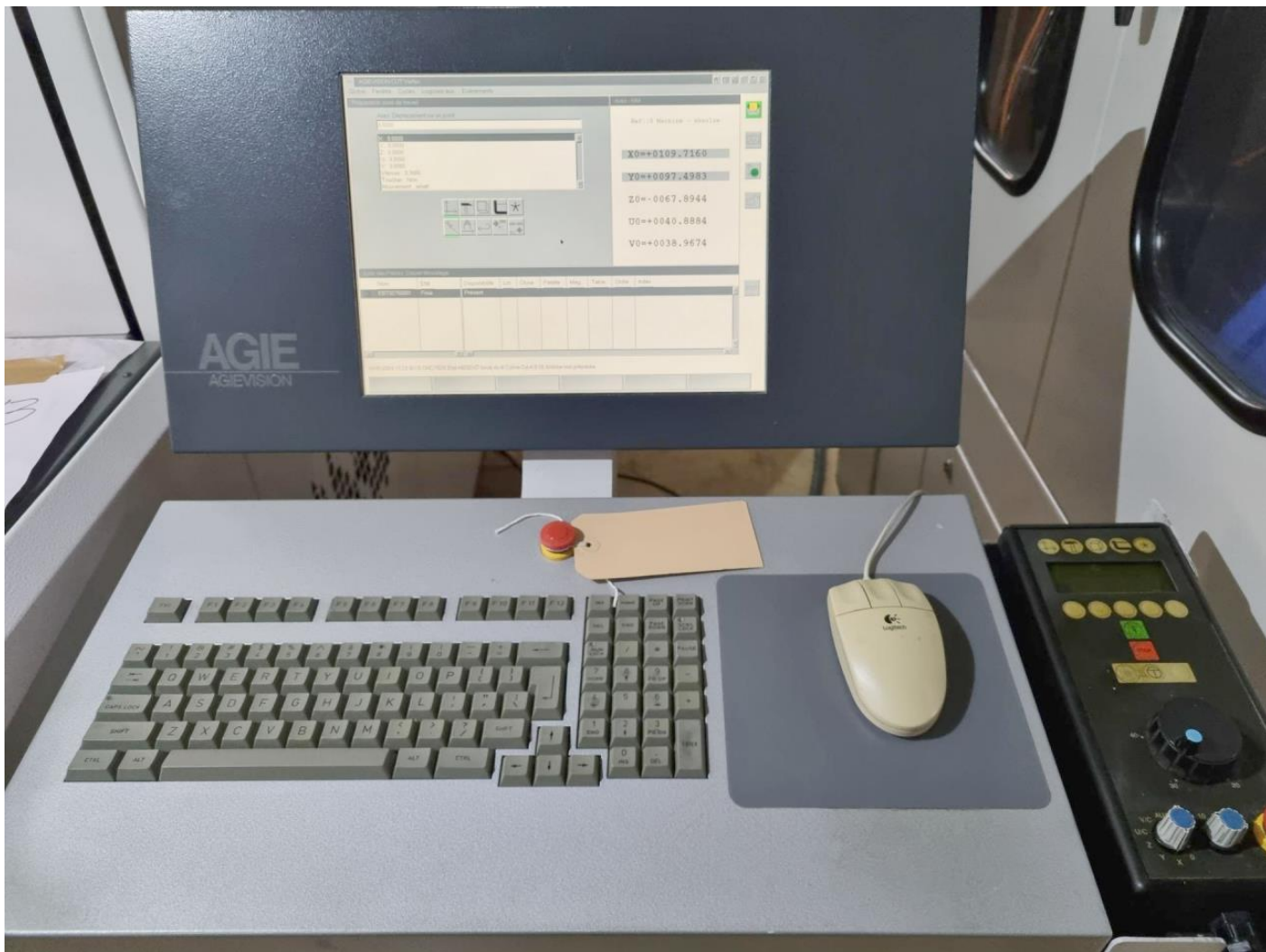
Diametro filo dell'elettrodo:

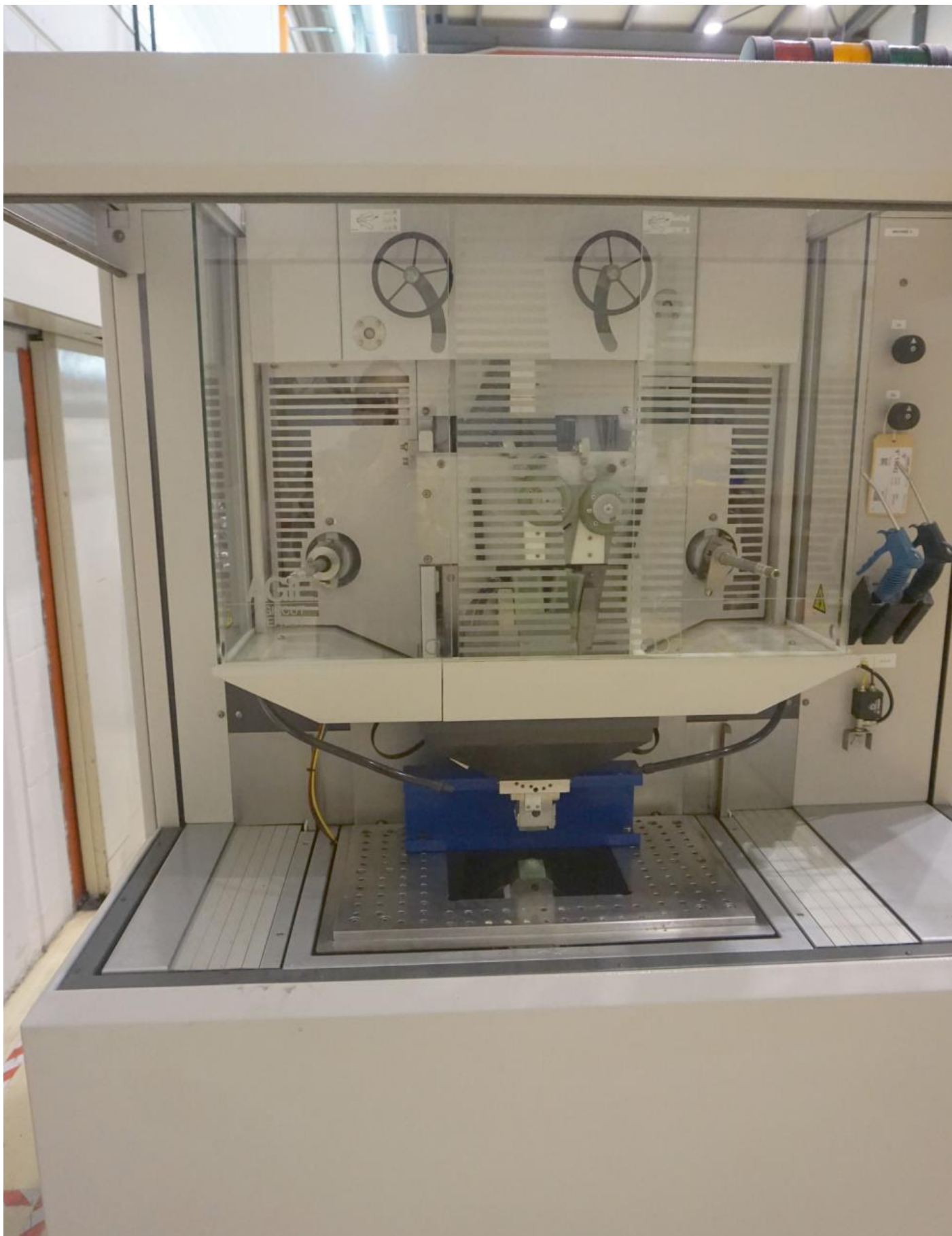
da	0.15 mm
fino	0.3 mm
Collegamento 50 Hz 3x	400 Volti
Potenza installata totale	7.3 kVA
Peso della macchina circa	2700 kg

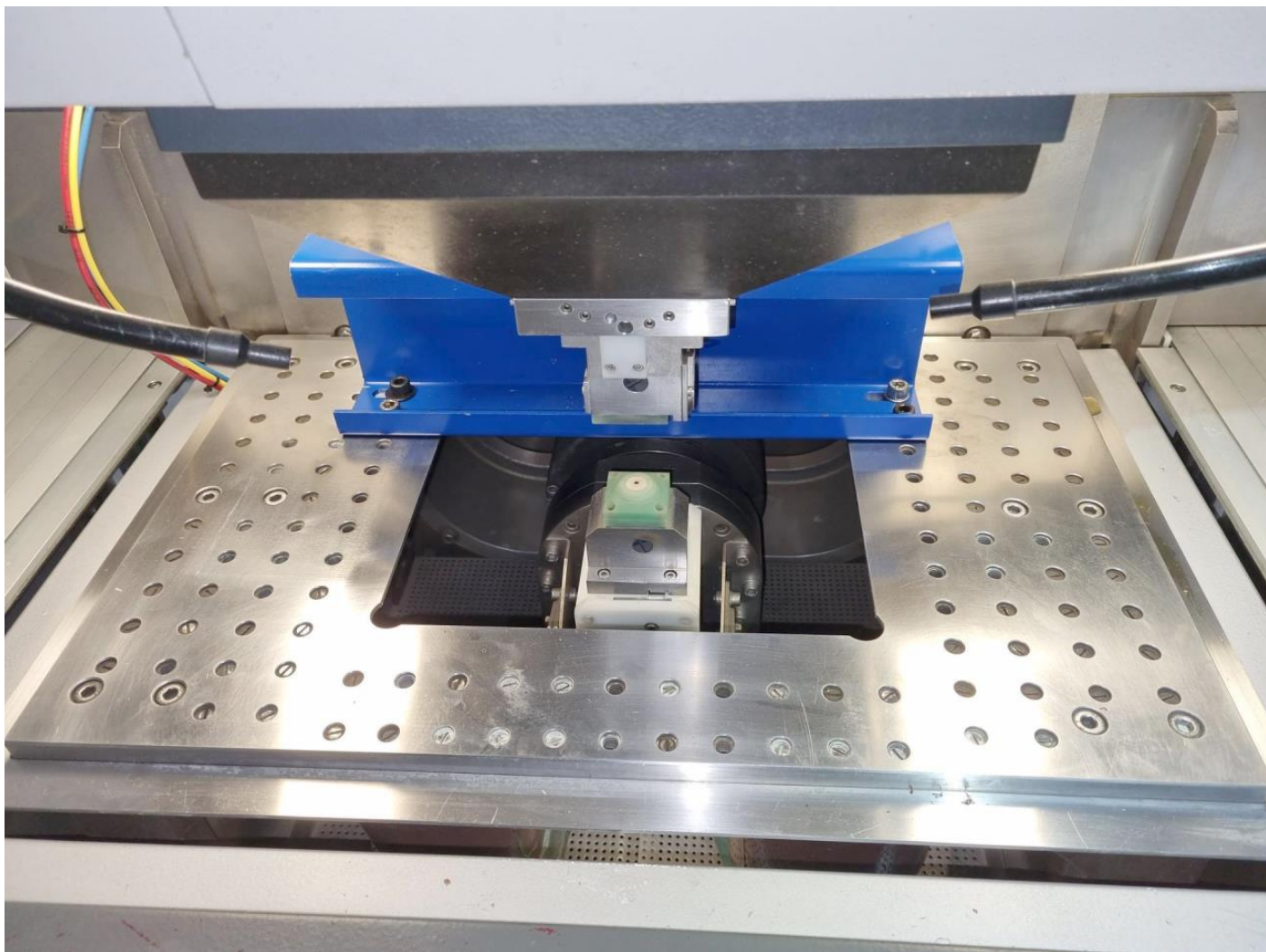
Dimensioni macchina:

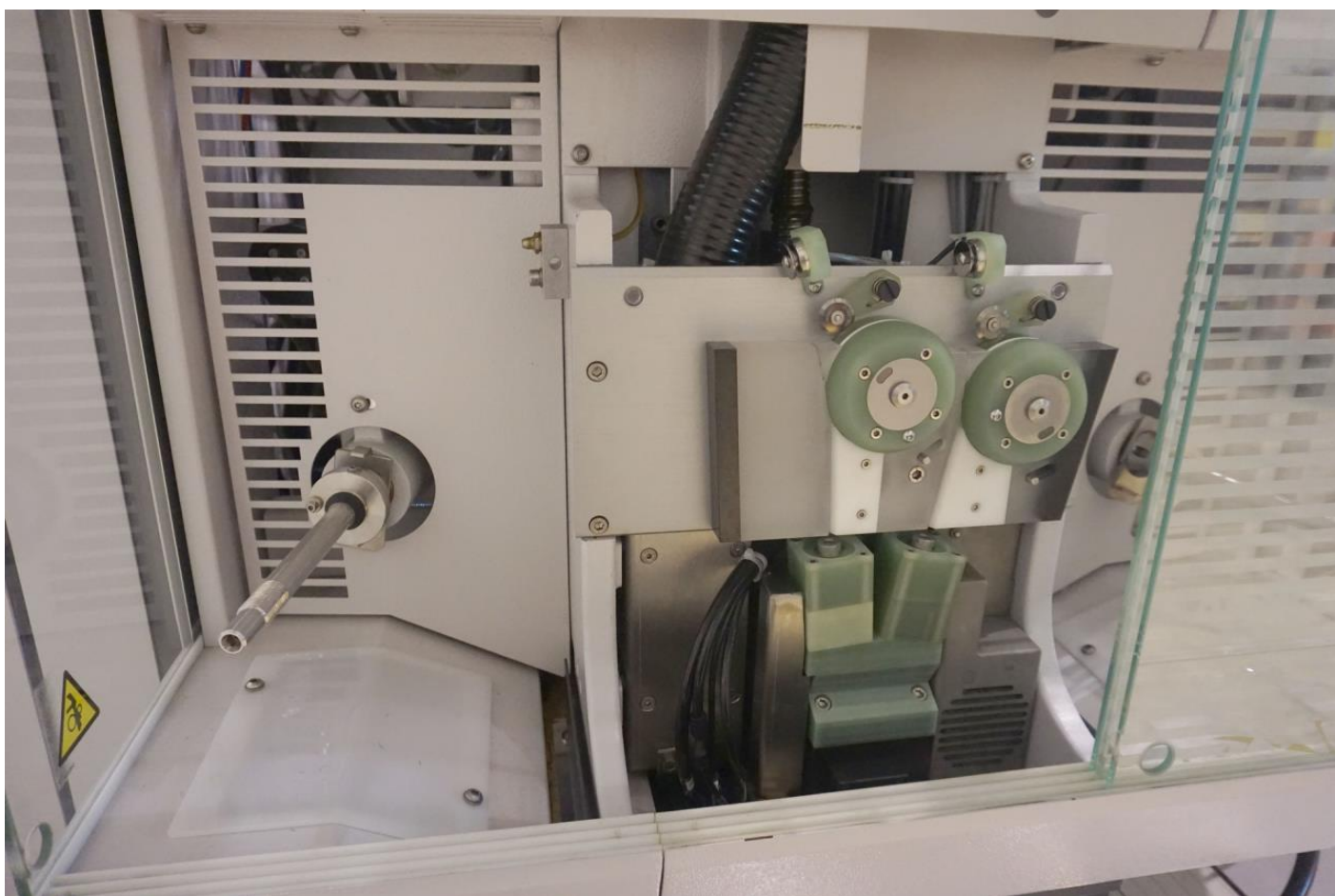
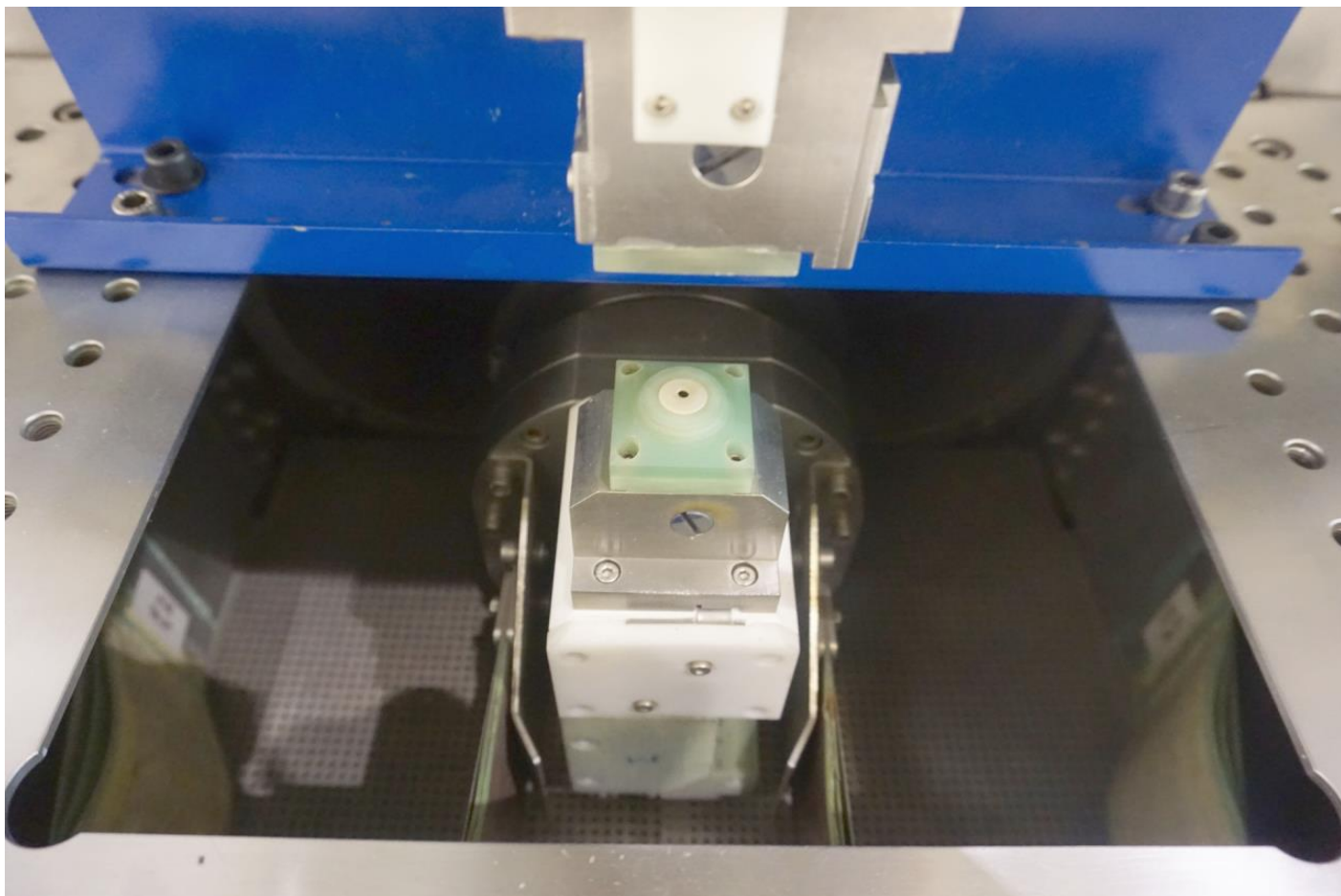
Lunghezza	2380 mm
Larghezza	2225 mm
Altezza	2220 mm





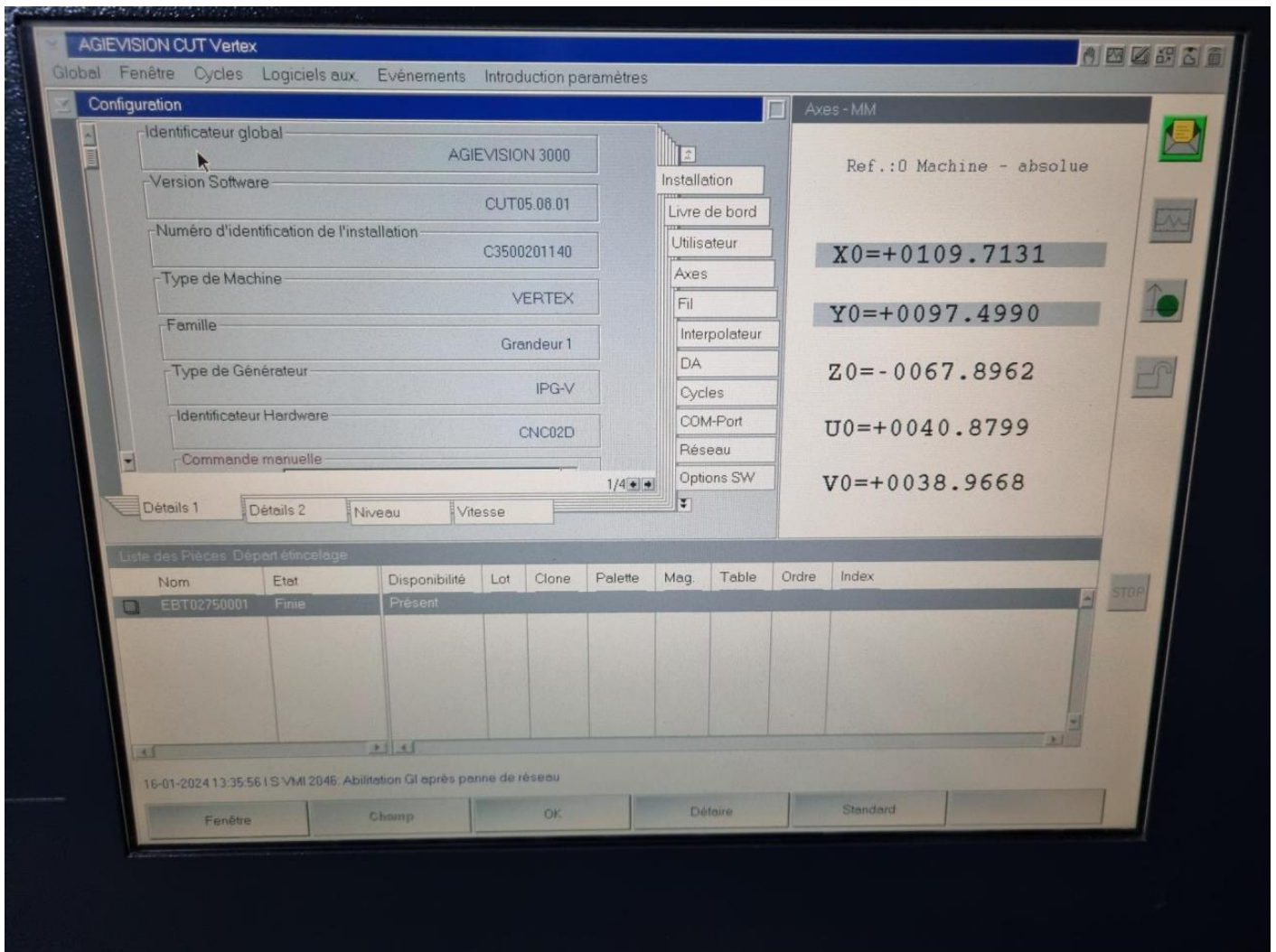






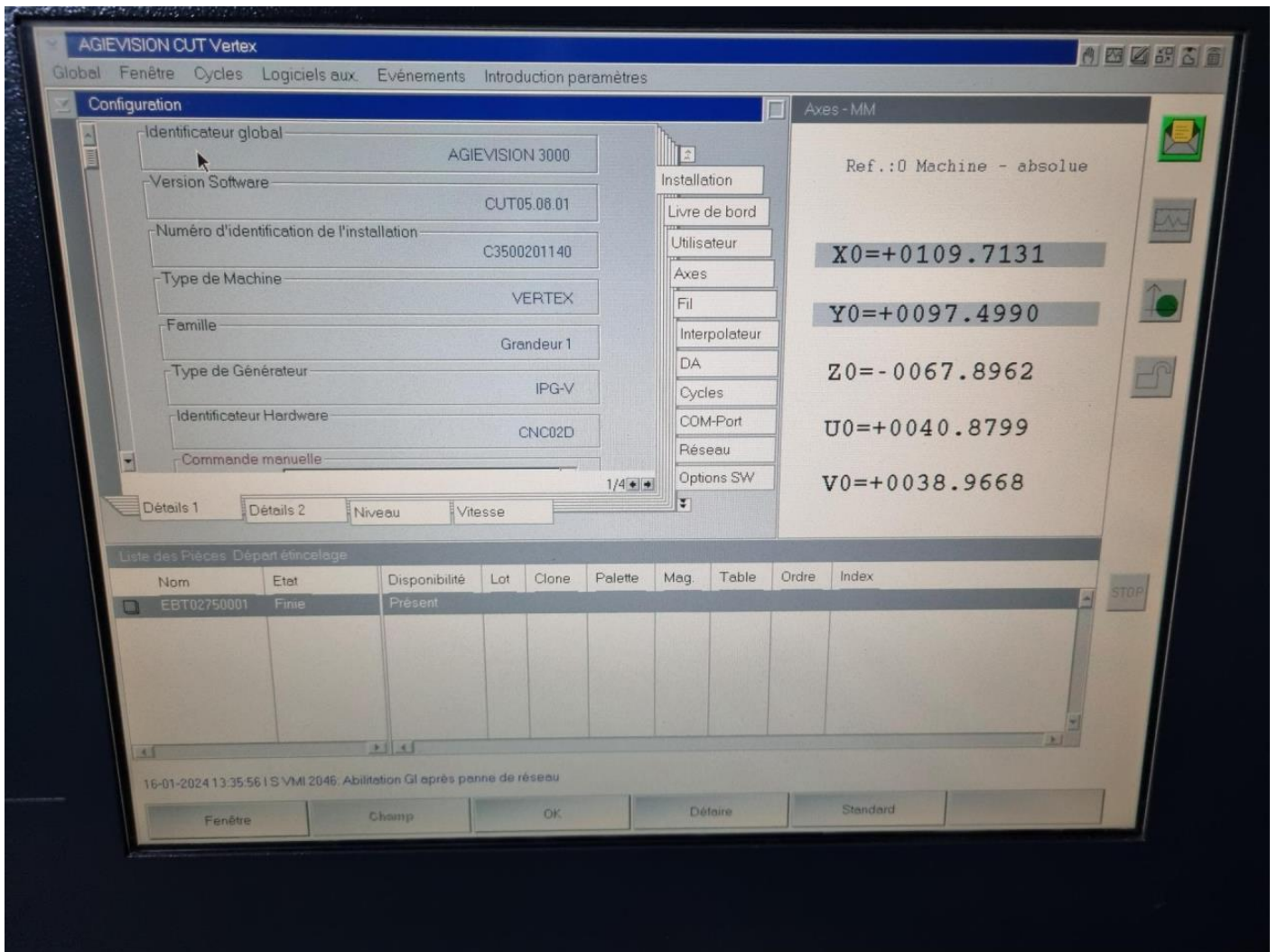


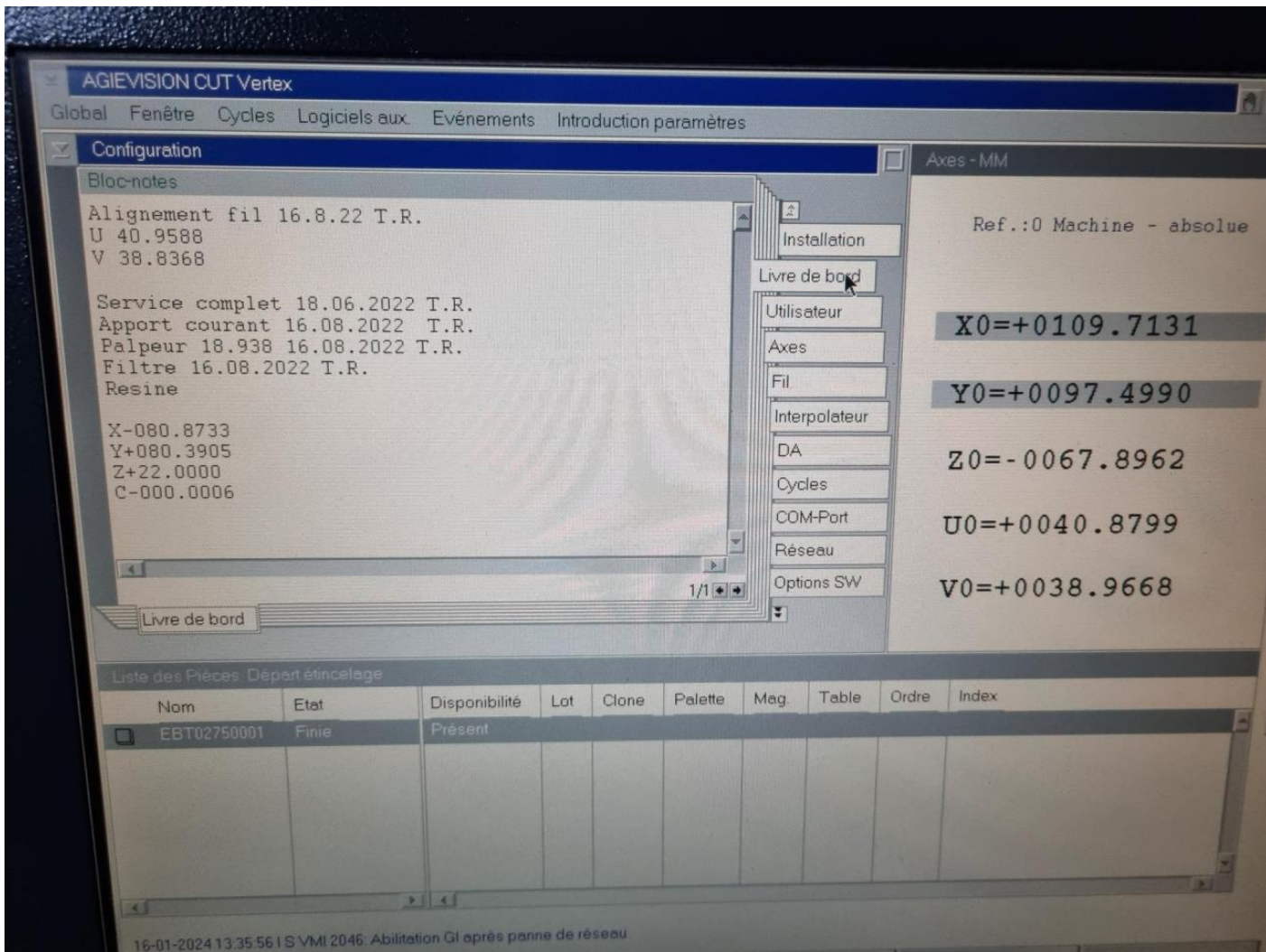


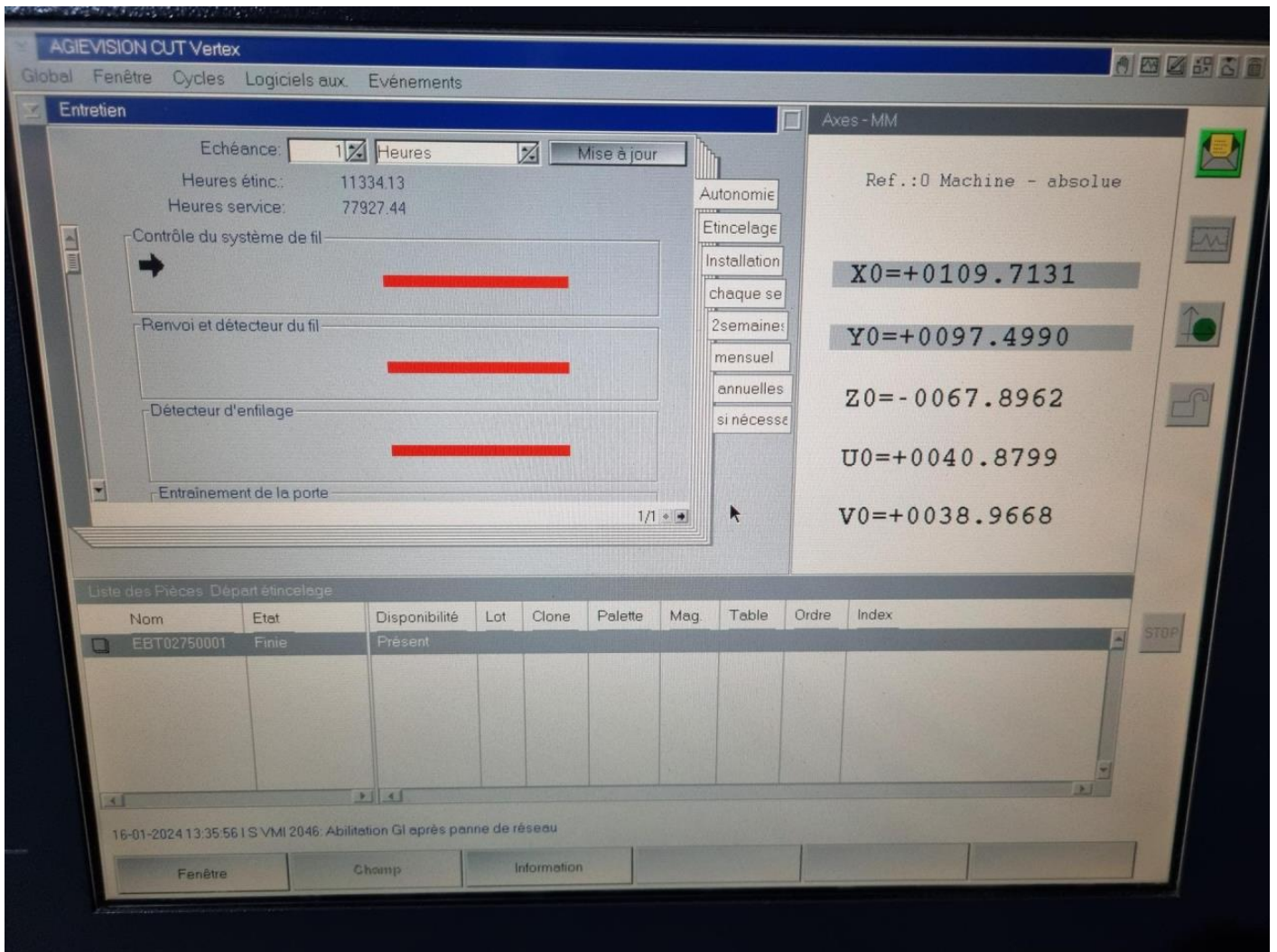


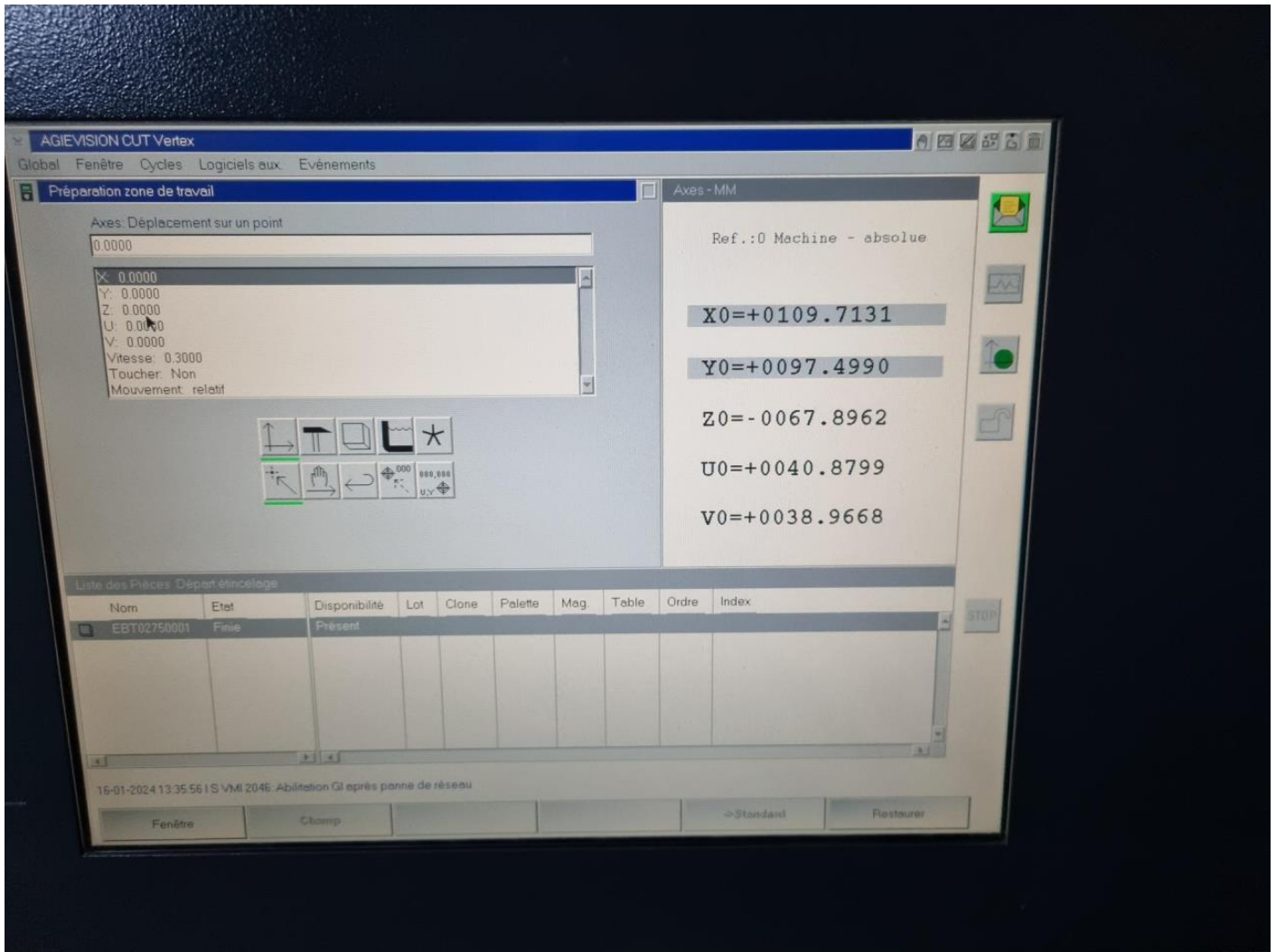


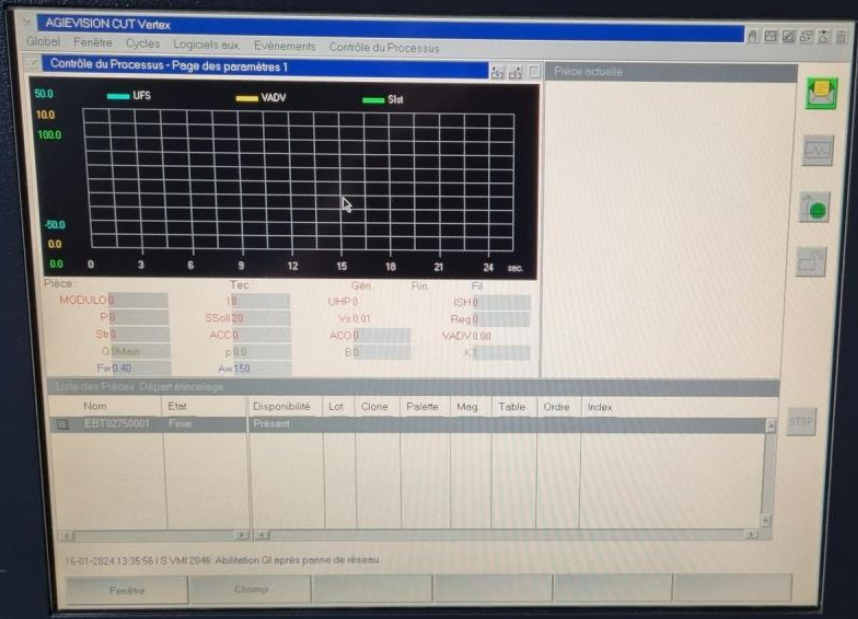
AGIE
VISION











AGIE
VISION