



Numero di inventario: 22165

Tornio automatico plurimandrino
TORNOS BS 20 B



Dati tecnici

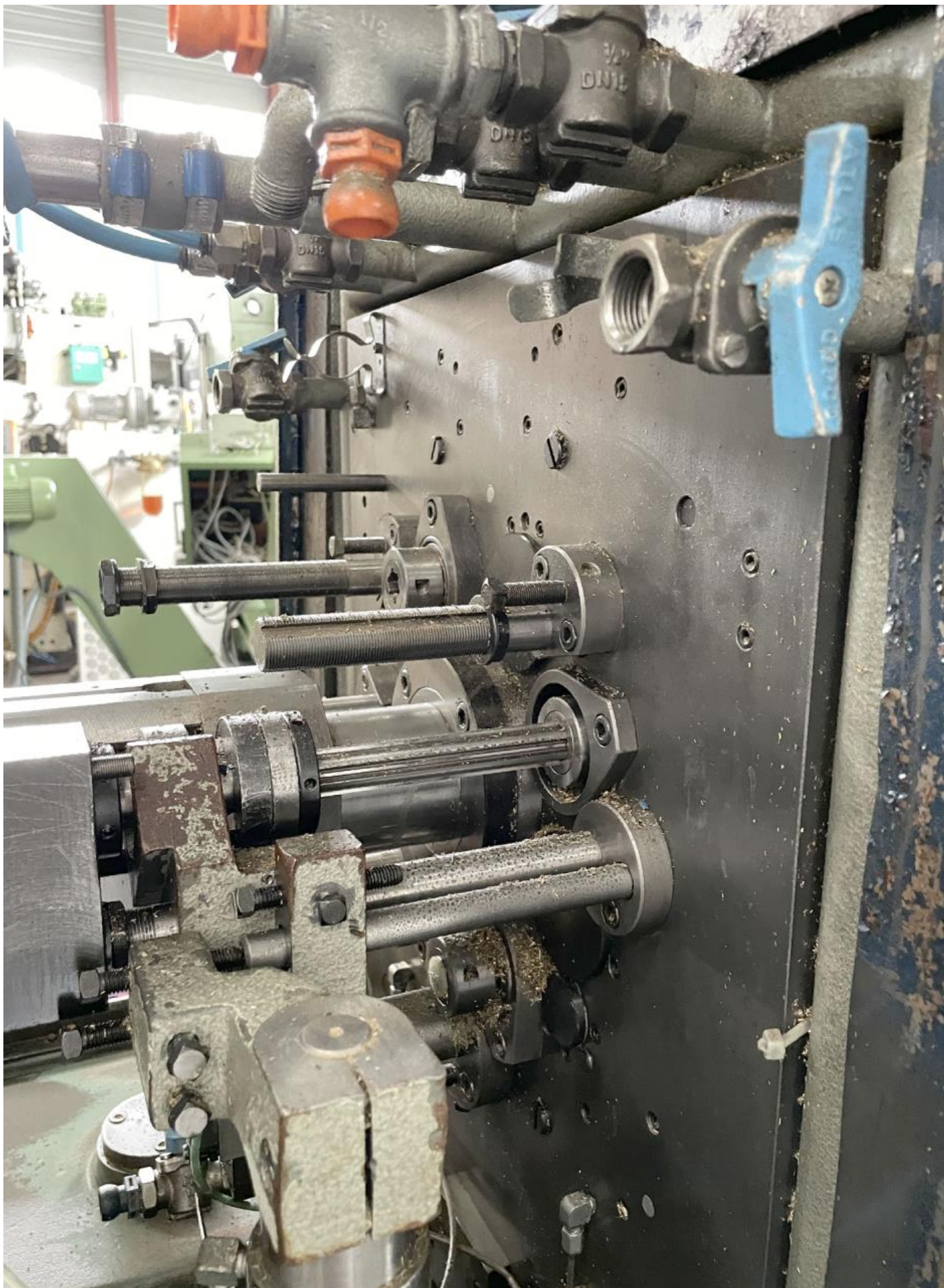
Numero di mandrini	8
Passaggio rotondo	22.0 mm
Passaggio quadro	15.0 mm
Passaggio esagonale	19 mm
Avanzamento massimo della barra	60 mm
Lunghezza mass. tornibile	60 mm
Giri mandrino:	
numeri (gradini)	20
da	625 g/min
fino	6035 g/min
Collegamento 50 Hz 3x	380 Volti
Potenza	55.0 kW
Peso della macchina circa	5100 kg
Dimensioni macchina:	
Lunghezza	2465 mm
Larghezza	1200 mm
Altezza	1700 mm
Accessori diversi:	
Caricatore autom. della barra	IEMCA
Tipo	SIR 25





Tension max. sur butée: 0,05 mm
Max. Druck auf dem Anschlag: 0,05 mm
Max. tension on stop screw: .002"





TORNOS BECHLER MOUTIER-SUISSE

Tableau des vitesses Speed-chart Geschwindigkeits-Tabelle

Moteur des broches Spindel-Antriebsmotor Spindel driving motor 1455 T/min U/min R.P.M.

Moteur Motor 1400 T/min U/min R.P.M.

Position spatiale Oberblech Steile Position lifting block

165° acceleration à 40 U/min 165° Beschleunigung bei 40 U/min 165° high speed by 40 R.P.M.

165° acceleration à 60 U/min 165° Beschleunigung bei 60 U/min 165° high speed by 60 R.P.M.

BS

Spindelrev./min Spindle rev./min Spindel U/min	Moteur des broches / Motor										Moteur / Motor									
	39	42	45	48	51	54	57	60	63	66	39	42	45	48	51	54	57	60	63	66
490	555	625	700	790	885	990	1115	1255	1420	1620	1890	2125	2430	2820	3300	3770	4350	5050	5880	6850
410	465	525	590	660	740	830	935	1050	1190	1360	1560	1780	2000	2310	2710	3110	3620	4250	5000	5880
340	385	435	490	550	615	690	775	875	995	1140	1310	1500	1710	2040	2400	2770	3270	3900	4650	5550
285	325	365	420	485	555	635	725	830	950	1090	1260	1460	1680	2020	2400	2790	3310	4050	4900	5850
240	275	310	365	430	505	590	685	800	930	1080	1250	1460	1690	2040	2430	2840	3380	4150	5000	6000
200	230	265	320	395	480	575	680	805	945	1100	1280	1500	1730	2090	2500	2930	3500	4300	5250	6350
172	200	235	290	370	460	560	670	805	955	1120	1310	1540	1780	2150	2570	3030	3630	4450	5450	6600
150	169	191	210	240	270	300	340	400	480	570	670	790	930	1100	1300	1530	1800	2200	2750	3400
128	144	163	183	206	230	255	290	350	430	530	640	770	920	1100	1310	1550	1830	2250	2900	3600
107	121	137	154	173	194	217	240	275	310	350	410	485	580	700	840	1000	1190	1430	1730	2100
90	103	118	134	154	176	199	224	260	295	340	400	480	580	710	860	1030	1230	1500	1850	2250
74	84	95	108	123	140	159	180	210	245	290	350	430	530	660	810	980	1180	1430	1780	2200
60	68	77	88	99	109	123	141	170	200	240	290	360	460	590	740	910	1100	1350	1700	2150
50	56	63	71	80	89	100	113	127	143	169	191	215	240	270	300	340	390	465	560	670
41	47	53	60	67	75	84	94	106	120	141	160	180	202	220	250	290	330	390	475	575
35	39	45	50	56	63	71	80	90	102	118	135	152	171	191	215	240	280	340	420	510
29	33	38	44	48	53	60	67	76	86	98	114	129	144	162	182	205	230	280	340	420
24	28	32	36	40	45	51	57	64	73	84	97	109	123	138	156	175	200	240	290	360
20	23	26	30	34	39	43	48	55	63	73	83	93	105	117	132	148	168	197	230	280
16	19	22	25	29	33	37	41	47	55	64	74	84	94	106	121	138	158	185	220	270
13	15	17	20	23	27	30	34	39	45	53	61	70	79	89	100	113	129	150	180	220
11	12	14	16	18	21	24	28	32	37	44	51	58	66	75	85	97	110	127	150	180
9	10	11	13	15	17	20	23	27	32	38	44	50	57	64	73	84	95	108	127	150
8	9	10	12	14	16	19	22	26	31	37	43	49	56	63	72	82	93	107	127	150
7	8	9	11	13	15	18	21	25	30	36	42	48	55	62	71	81	92	106	126	150
6	7	8	10	12	14	17	20	24	29	35	41	47	54	61	70	80	91	105	125	150
5	6	7	9	11	13	16	19	23	28	34	40	46	53	60	69	79	90	104	124	150
4	5	6	8	10	12	15	18	22	27	33	39	45	52	59	68	78	89	103	123	150
3	4	5	7	9	11	14	17	21	26	32	38	44	51	58	67	77	88	102	122	150
2	3	4	6	8	10	13	16	20	25	31	37	43	50	57	66	76	87	101	121	150
1	2	3	5	7	9	12	15	19	24	30	36	42	49	56	65	75	86	100	120	150
0	1	2	4	6	8	11	14	18	23	29	35	41	48	55	64	74	85	99	119	150

Tararage - Gewindeschneiden Threading

Spindelrev./min Spindle rev./min Spindel U/min

Spindel rechts Right-hand Spindel links Left-hand

4 83 42 75 38

5,3 85 49

8,4 57 38

5,2 74 31

7,1 73 32

Détarage - Rücklauf Threading-off

Spindel rechts Right-hand Spindel links Left-hand

2 78 26 52 53

4 75 38 63 42

Perceur tournant - Schnellbohrspindel High speed drilling spindle

Vitesse de perceuse - Vitesse de la broche à 3 Rotations/minute - Drehgeschwindigkeit - Drehgeschwindigkeit

Spindel Spindle Spindel U/min

P1 P3 R

68 45 0,33

45 63 0,62

P2 P3

45 60 1,58

69 62 ?

General Safety Rules for BS 20

- Read carefully the instructions of manipulation before using the machine.
- Always comply with the instructions given on the drill plates.
- Always put on the safety glasses, you have to make sure that all safety devices are well in place and that:
- Do not get too close to the moving parts.
- Before touching the workpieces or the tools, please stop the machine.
- Take off any watch, bracelet, necklace before working on the lathe and protect long hair with a capnet.
- The operation and commissioning of the machine must be done by specialist.
- For maintenance, oil, lubrication and repair, all power supply has to be cut.
- It is strictly forbidden to suppress, to take off or to disable any safety devices.
- It is strictly forbidden to take off or to damage warning plates on the machine or on parts of the machine.

Ved stop i maskin eller magasin, SKAL de 9 første delene etter oppstart VRAKES.

STOPP

0 1

