



Numero di inventario: 12390

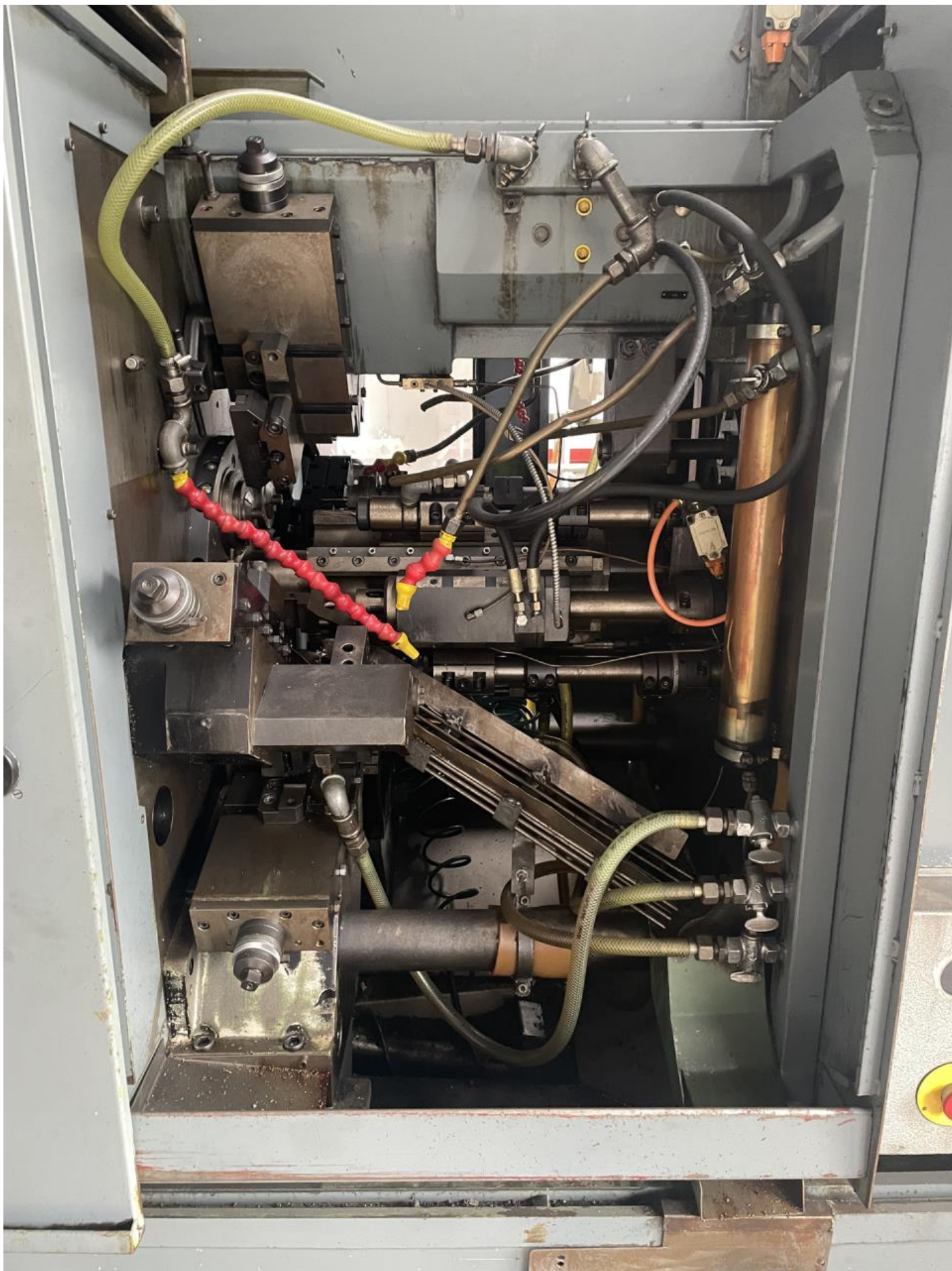
Tornio automatico plurimandrino
SCHÜTTE SF 26

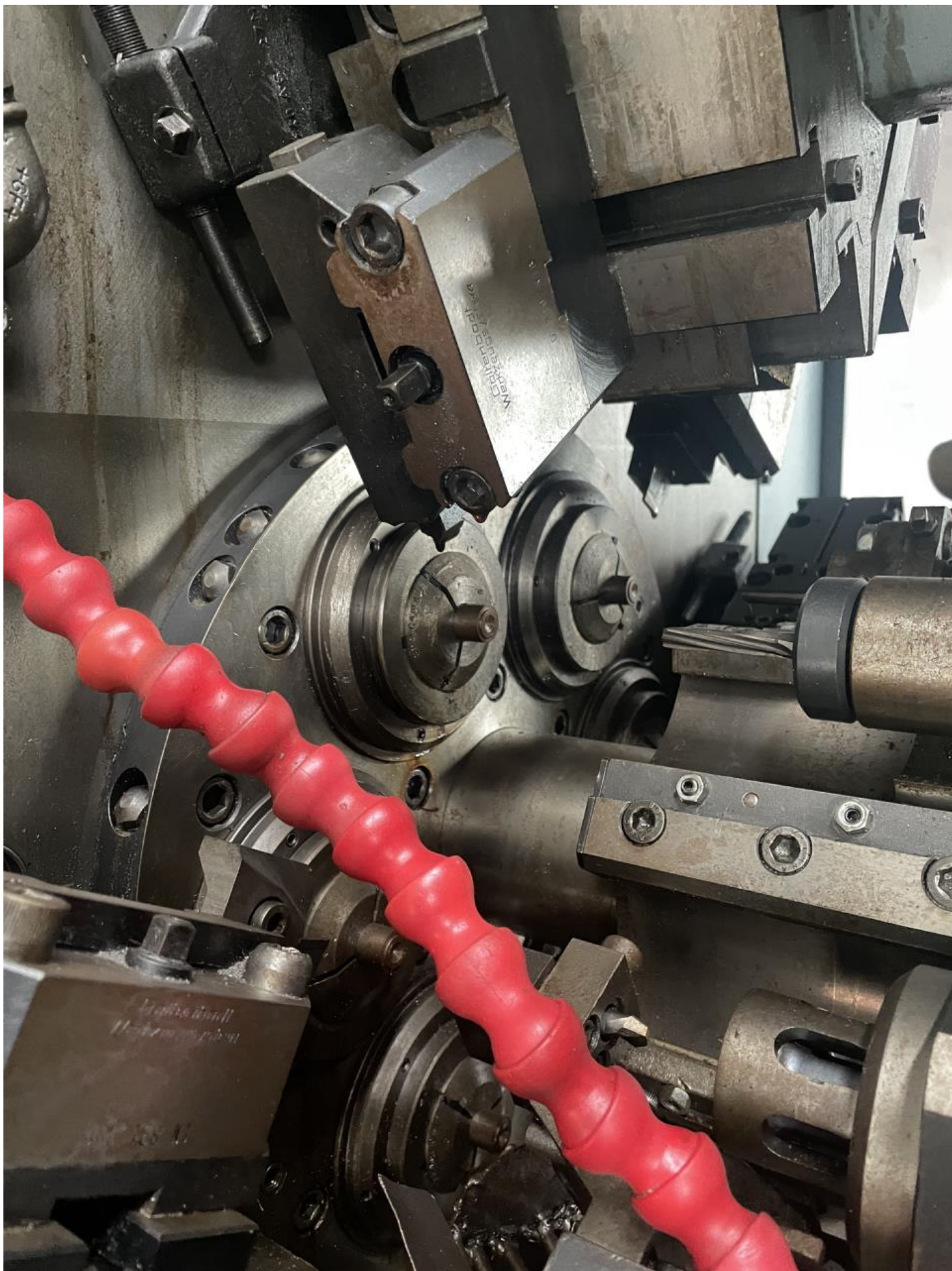


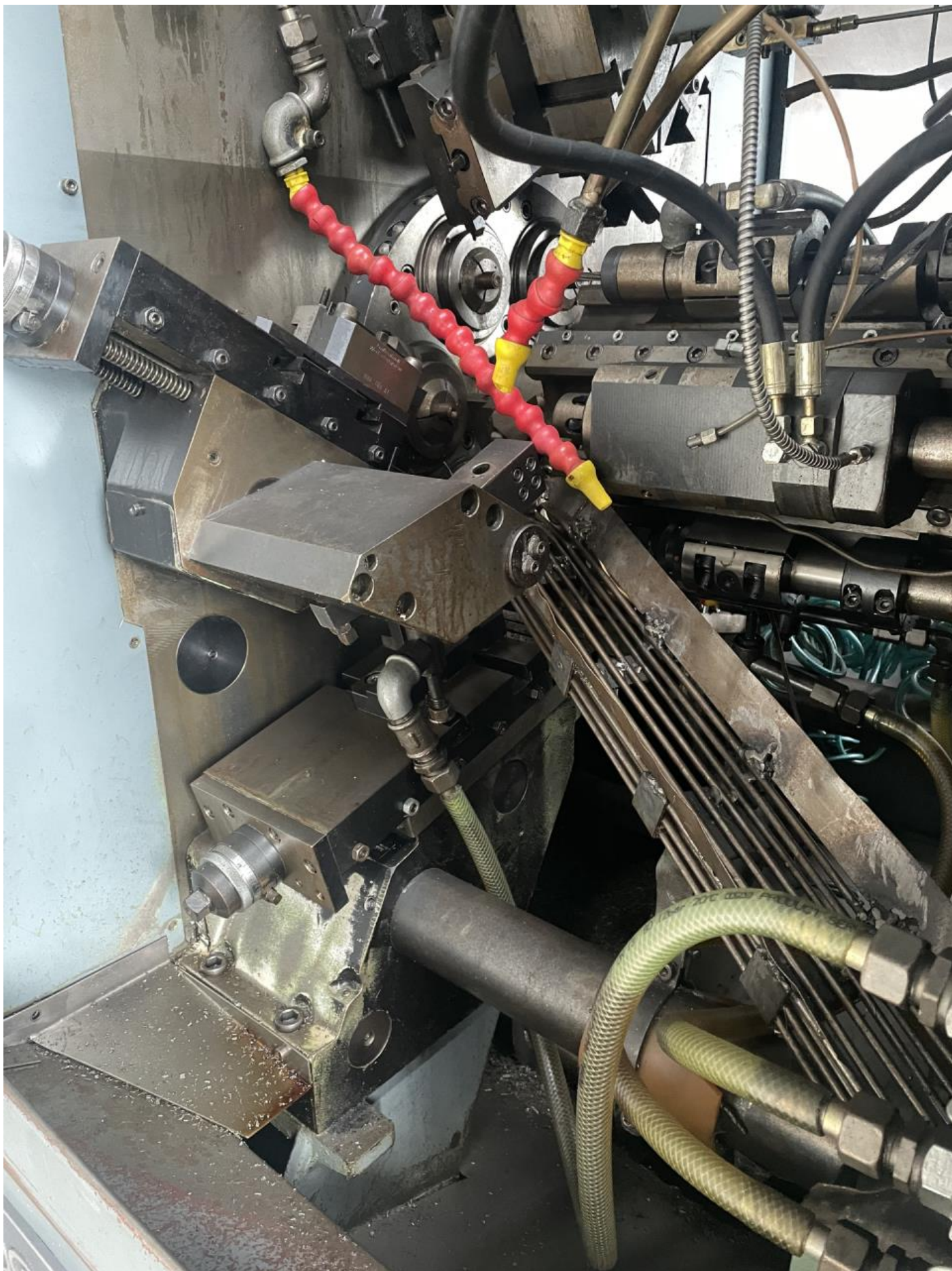
Dati tecnici

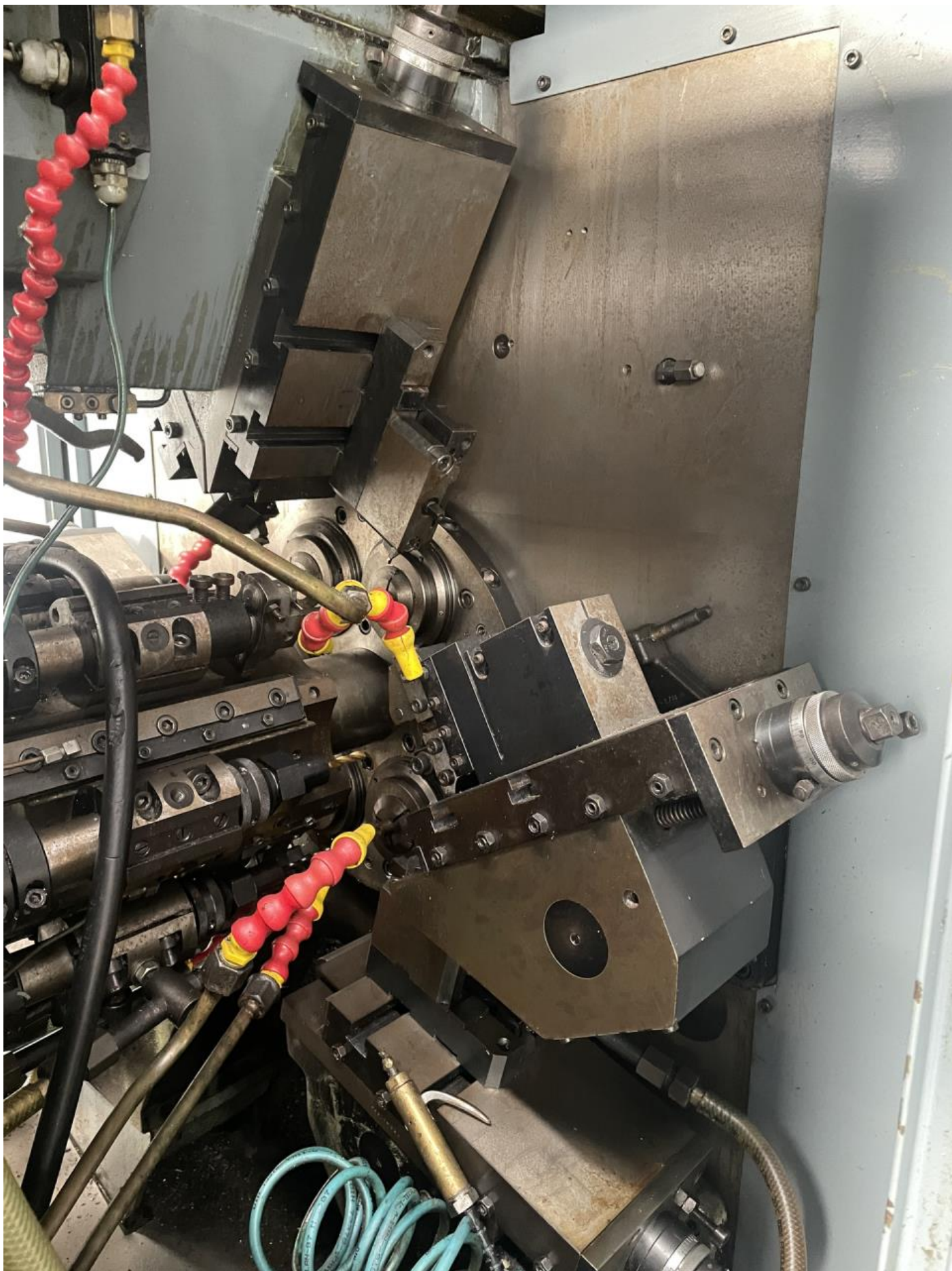
Numero di mandrini	6
Passaggio rotondo	26 mm
Avanzamento massimo della barra	80 mm
Lunghezza mass. tornibile	39.6 mm
Corsa massimo slitta longitudinal	63 / 39.6 mm
Numero di pezzi possibile	31
Tempo di fabbricazione pezzi:	
da	0.36 sec
fino	95 sec
Giri mandrino:	
da	355 g/min
fino	5000 g/min
Collegamento 50 Hz 3x	380 Volti
Potenza	15 kW
Peso della macchina circa	4000 kg
Dimensioni macchina:	
Lunghezza	3125 mm
Larghezza	1030 mm
Altezza	2000 mm
Accessori diversi:	
Avanzamento barra	
Slitta longitudinale numero	2
Controllo del utensile	
Controoperazione	













Control panel for BRANKAMP Widatronic 8060. The panel features a large rectangular display screen at the top. Below the screen is a control interface divided into three main sections: LIMITS, INPUT, and OPERATION.

- LIMITS:** Includes a home button, buttons for C1, C2, C3, C4, a LIMIT SET button, and MENU I/MENU II buttons.
- INPUT:** A numeric keypad with buttons for digits 0-9 and an ENTER button.
- OPERATION:** Includes a RESET button, AUTO, SET UP, and MEMORY buttons, and a rotary switch labeled OPERATE with SERVICE and SYSTEM positions.

At the bottom of the panel, the BRANKAMP logo and the model name "Widatronic 8060" are printed.





