



Numéro d'inventaire: 12390

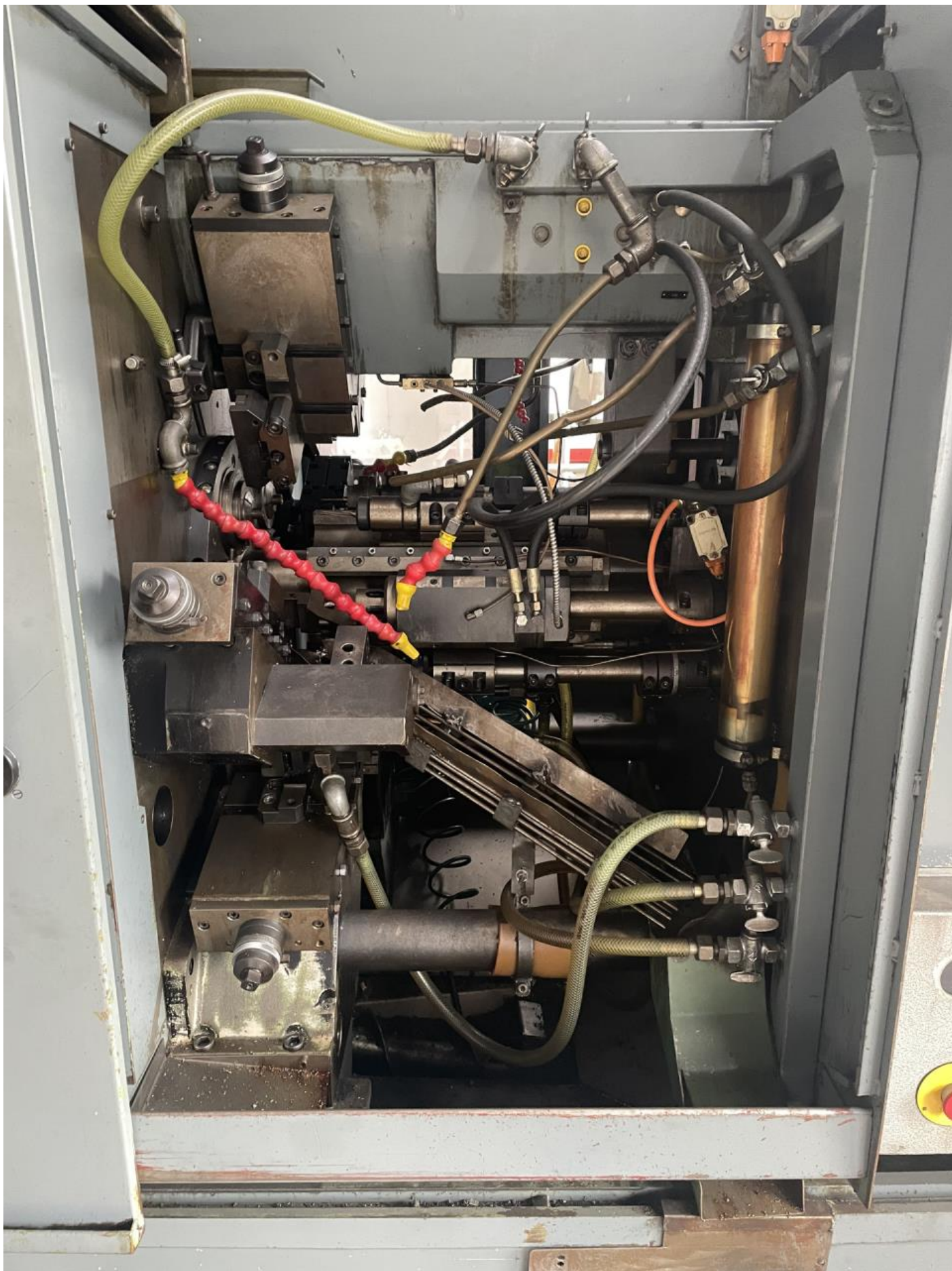
Décolleteuse multibroches SCHÜTTE SF 26

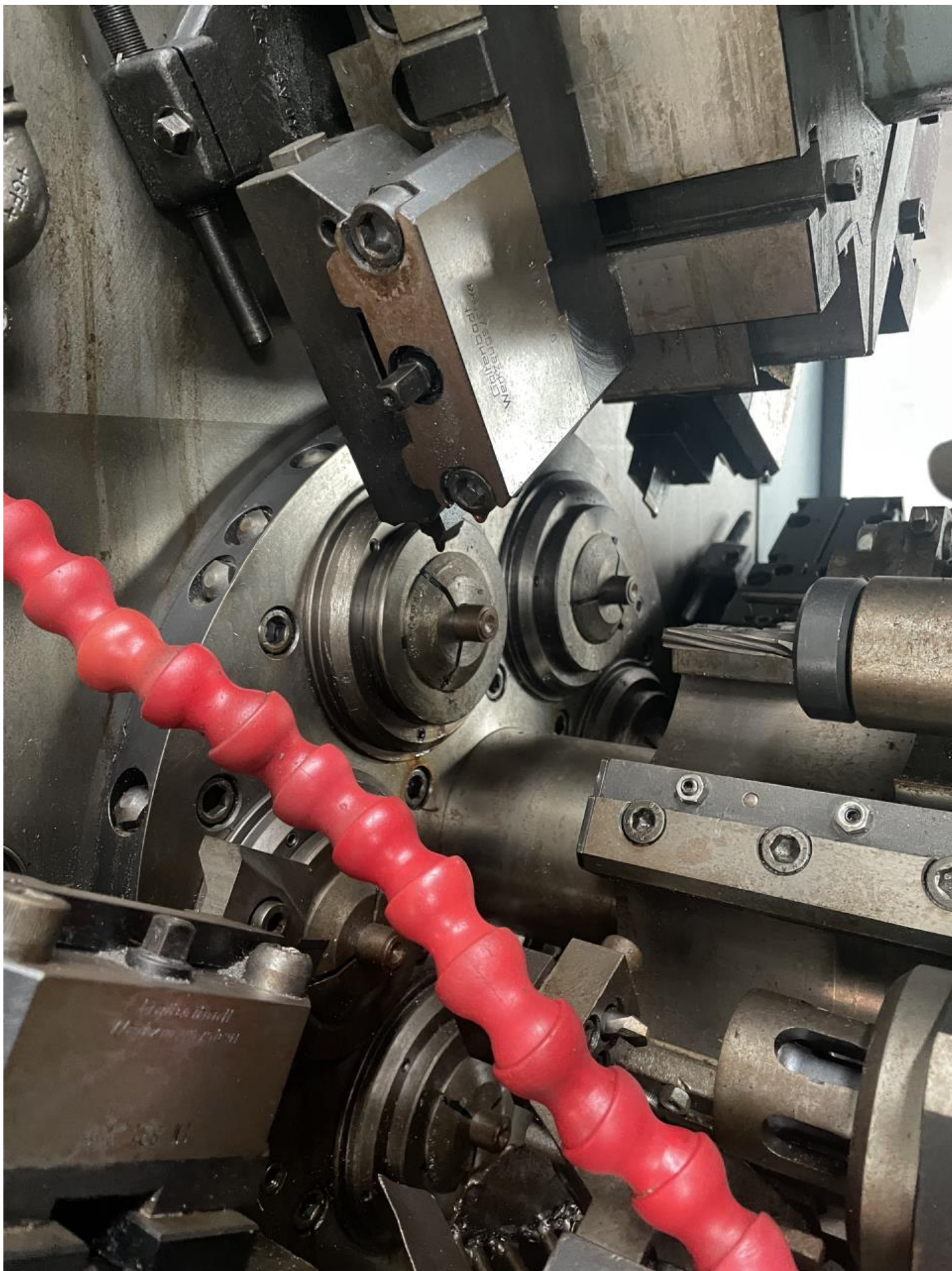


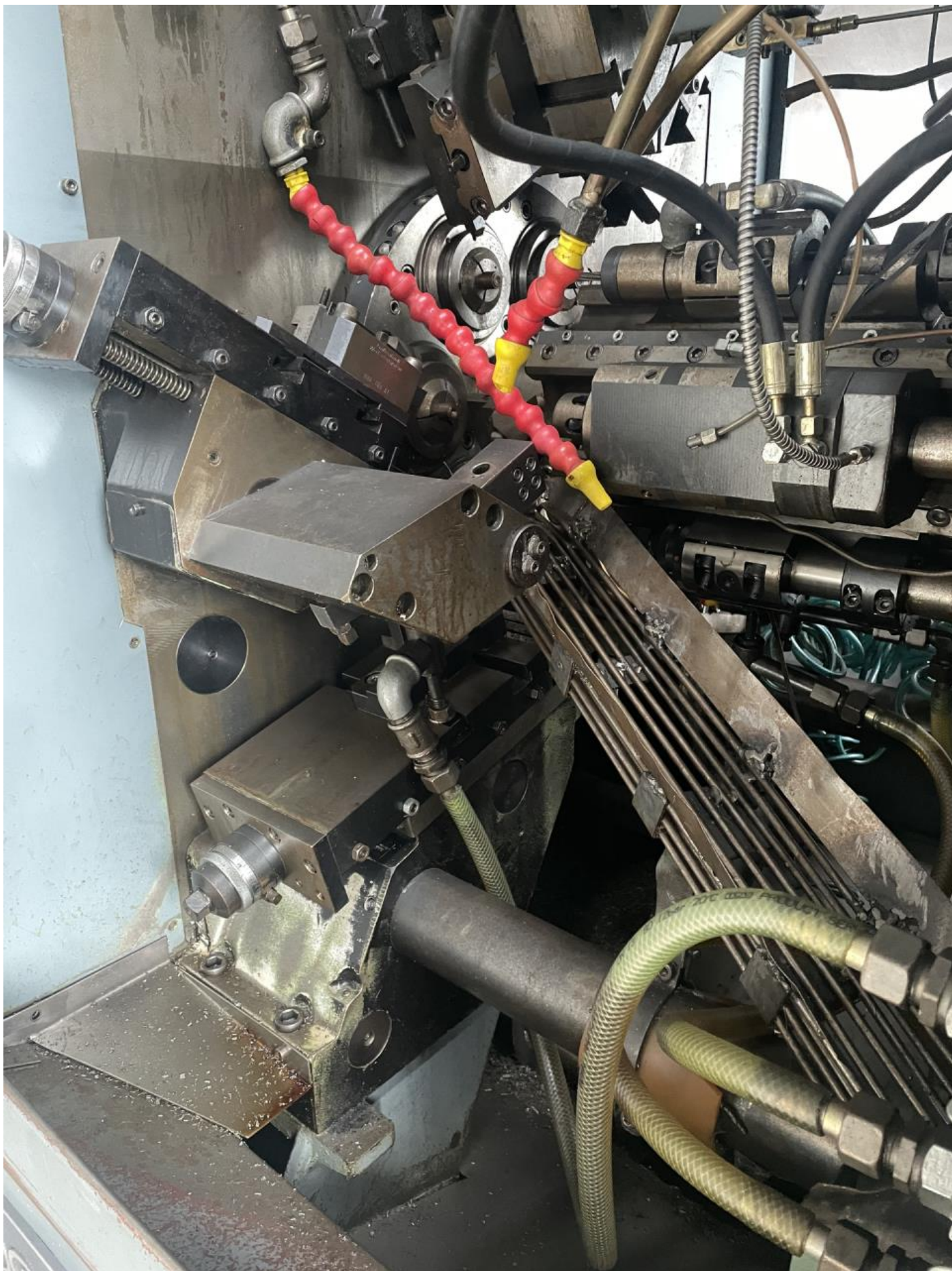
Données techniques

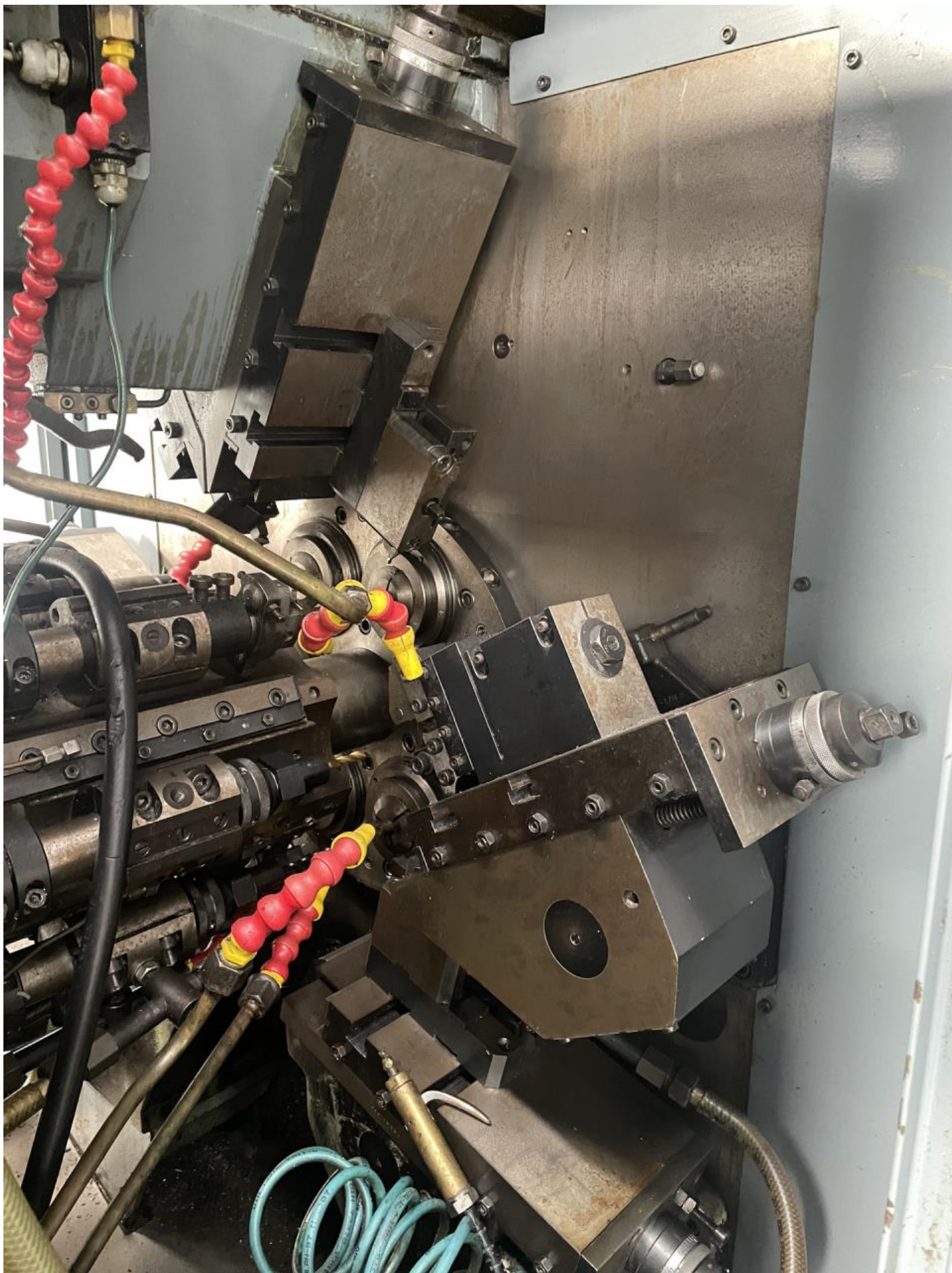
| | |
|--------------------------------|---------------|
| Nombre de broches | 6 |
| Passage rond | 26 mm |
| Avance max. de la matière | 80 mm |
| Longueur max. de tournage | 39.6 mm |
| Course du chariot longitudinal | 63 / 39.6 mm |
| Nombre de pièces possible | 31 |
| Temps de fabrication pièce: | |
| de | 0.36 secondes |
| à | 95 secondes |
| Vitesses de broche: | |
| de | 355 t/min |
| à | 5000 t/min |
| Branchement 50 Hz 3x | 380 Volt |
| Puissance | 15 kW |
| Poids de la machine env. | 4000 kg |
| Encombrement machine: | |
| Longueur | 3125 mm |
| Largeur | 1030 mm |
| Hauteur | 2000 mm |
| Accessoires divers: | |
| Avance-barres (pousse barre) | |
| Coulisse longitudinal nombre | 2 |
| Contrôle bris d'outils | |
| Contre opération | |













Control panel for BRANKAMP Widatronic 8060. The panel features a large rectangular display screen at the top. Below the screen is a control interface divided into three main sections: LIMITS, INPUT, and OPERATION.

- LIMITS:** Includes a home button, buttons for C1, C2, C3, C4, a LIMIT SET button, and MENU I / MENU II buttons.
- INPUT:** A numeric keypad with buttons for 0-9 and an ENTER button.
- OPERATION:** Includes a RESET button, AUTO, SET UP, and MEMORY buttons, and a rotary switch labeled OPERATE with SERVICE and SYSTEM positions.

At the bottom of the panel, the BRANKAMP logo and the model name "Widatronic 8060" are printed.





