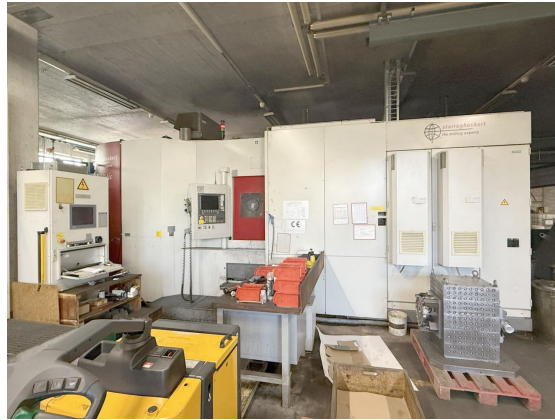




Inventory number: 23125

Machining center horizontal with FMS  
STARRAG HECKERT HEC 800  
SIEMENS SINUMERIK 840 D Solutionline  
2011



### Technical data

Number of axis total	4
Table length	800 mm
Table width	800 mm
Maximum swing circle of up to	1600 mm
Longitudinal travel (X-axis)	1450 mm
Transversal travel (y-axis)	1100 mm
Vertical travel (z axis)	1300 mm
Dimension of the workpice:	
Height	1400 mm
Diameter	1400 mm
B axis	0.001 °
Table speed	60 rpm
Holding torque B-axis	20000 Nm
Pallets chancing device:	
numbers	10
Length	800 mm
Width	800 mm
Transport weight	2000 kg
Tool changer:	
Tool magazine number of tool places	320
Tool diameter max.	110 mm
Diameter with free adjacent pockets	250 mm
Tool lenght	450 mm
Max. tool-weight	35 kg
Average chip-to-chip time	5 sec
Spindle nose    SK	50 DIN 69871

Spindle speeds:

stepless

from 20 rpm

up to 7500 rpm

Torque max. 992 / 1510 Nm

Feeds:

X axis 60 m/min

Y axis 60 m/min

Z axis 60 m/min

Acceleration 5 m/s

Max. Feed force 2200 N

Voltage 50 Hz 3x 400 Volt

Spindle power 41 / 67 kW

Machine's weight about 25000 kg

Overall dimensions machine:

Length 15485 mm

Width 13180 mm

Height 4405 mm

Various accessories:

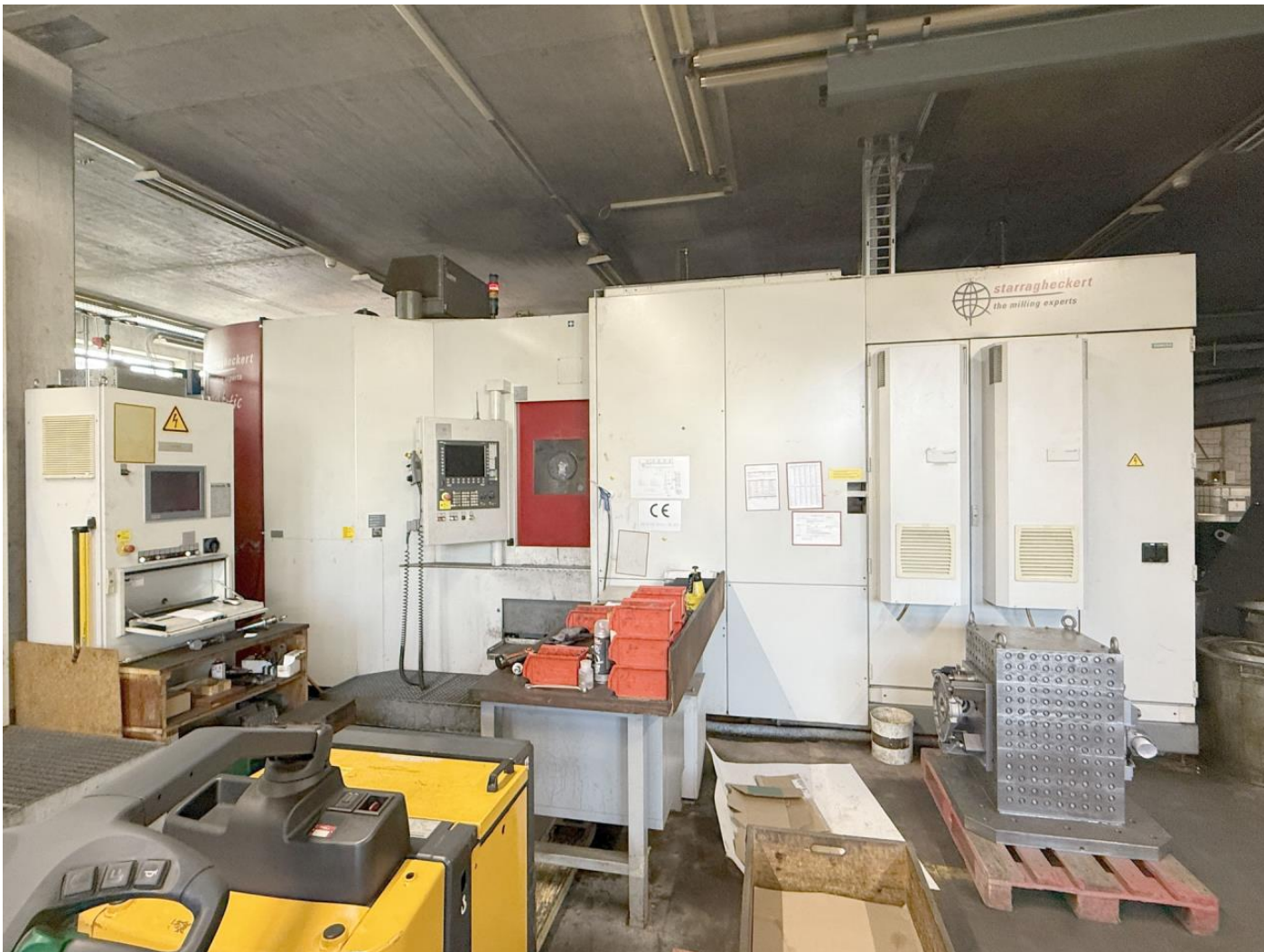
Pallets: number 2 (800 x 1000)

Set of toolholders

High pression colant device 80 bar

Paper filtration system

Filter for coolant system KNOLL































+110

SCHULER	
TYPENBEZEICHNUNG	LMC 1400 / HEC 800
AUFTRAG-NR.	499 375
BAUJAHR	2011
ANLAGEN-NR.	64-473.271
SCHALTPLAN-NR.	64-700.998
NENNSPANNUNG	V AC 400
STEUERSpannung	V AC
STEUERSpannung	V DC 24
FREQUENZ	Hz 50
NENNLEISTUNG	kVA 30
NENNSTROM	A 60
MAX. VORSICHERUNG	A 80
MASCHINENINVENTAR-NR.	
SCHULER AUTOMATION GMBH & CO. KG D-75050 GEMMINGEN - GERMANY	

NOT-AUS-  
taster  
wirkt nur auf  
Linienpeicher

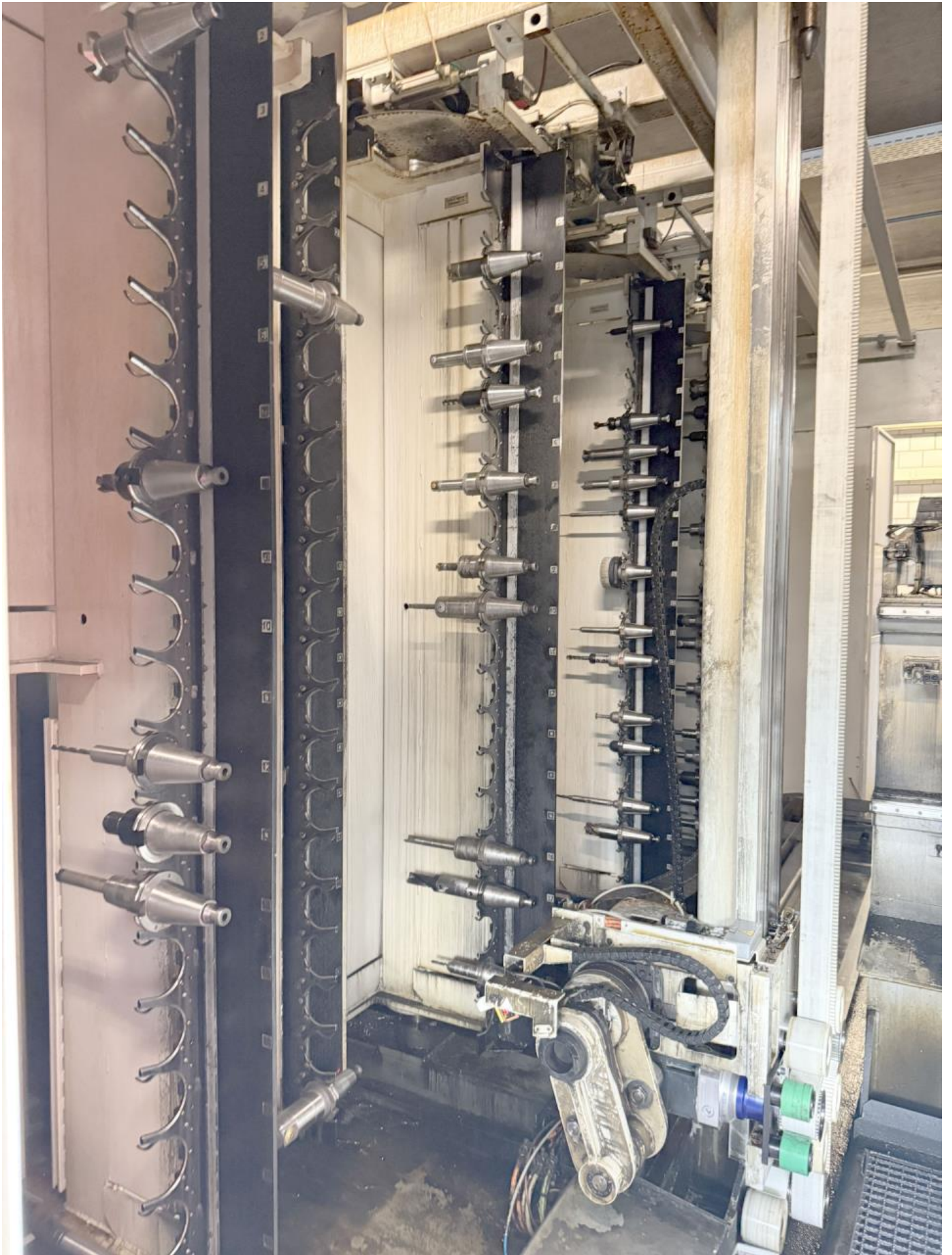
ACHTUNG  
Wartungsarbeiten  
Kaltstartgefahr beim  
Einstecken von  
Pneumatik  
Es ist anzunehmen, dass  
Unterdruck herrscht!

RUECKPLATZ

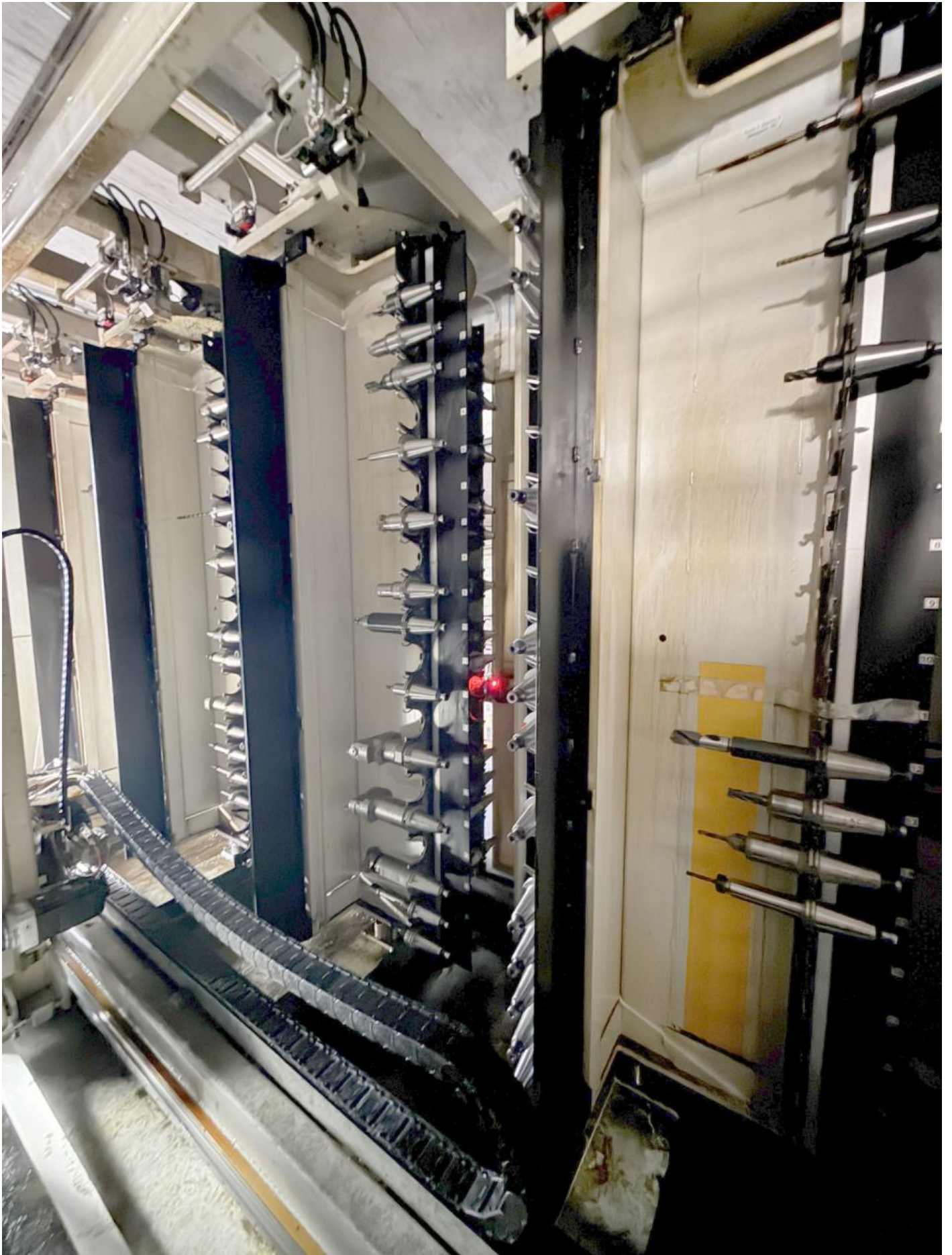
Row of indicator lights: 1 white, 1 grey, 1 grey, 1 grey, 1 red, 1 grey, 1 grey, 1 grey, 1 grey, 1 grey, 1 white, 1 grey, 1 white.

Control cabinet containing a keyboard on a tray. A small label inside the cabinet reads: 'Schuler Automation Engineering', 'Tel: +49 750 700 800', 'Fax: +49 750 700 100', 'E-Mail: service@schuler-automation.com'. A handwritten note at the bottom of the cabinet says 'Paketnummer: 415410'.













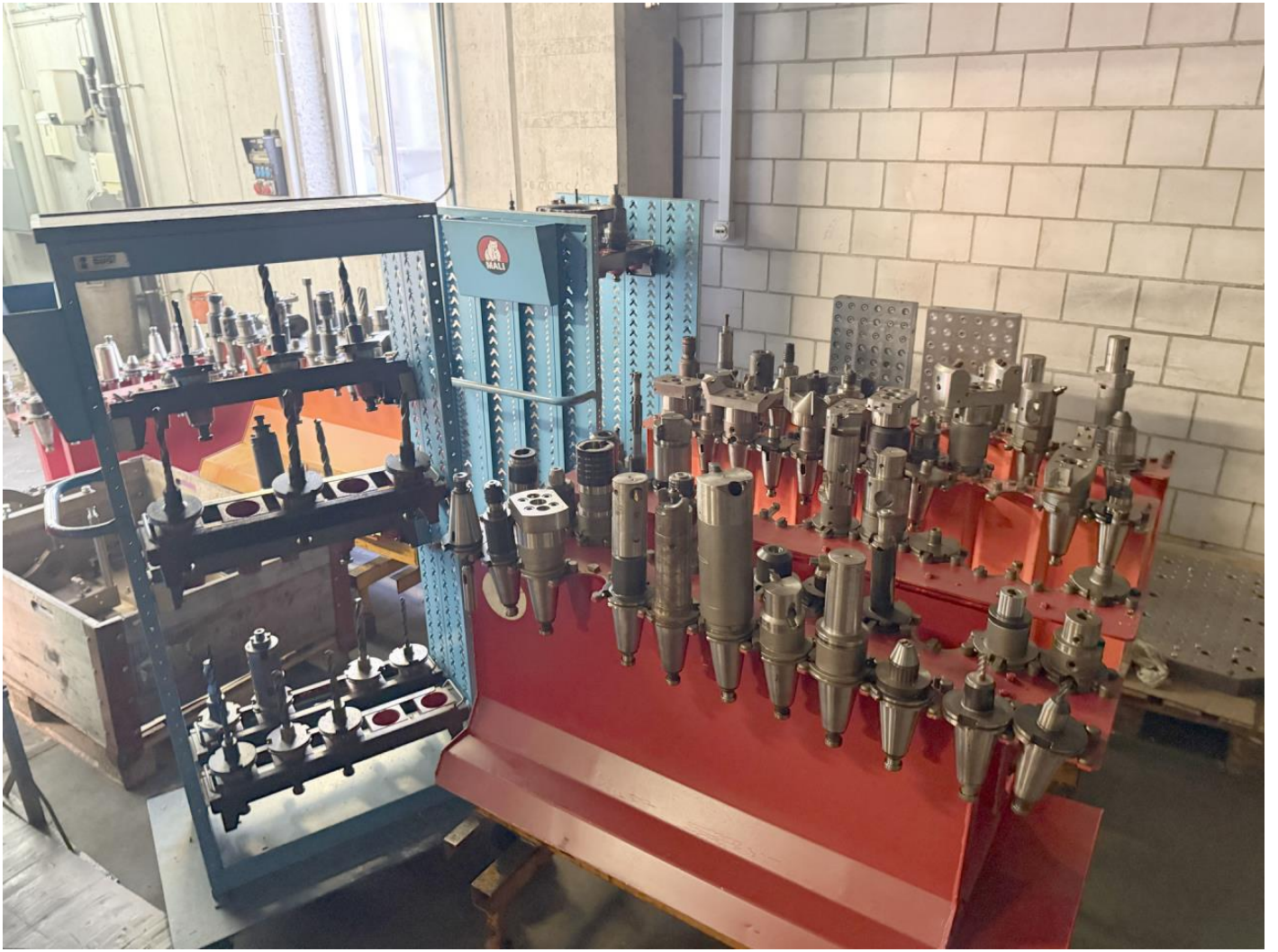






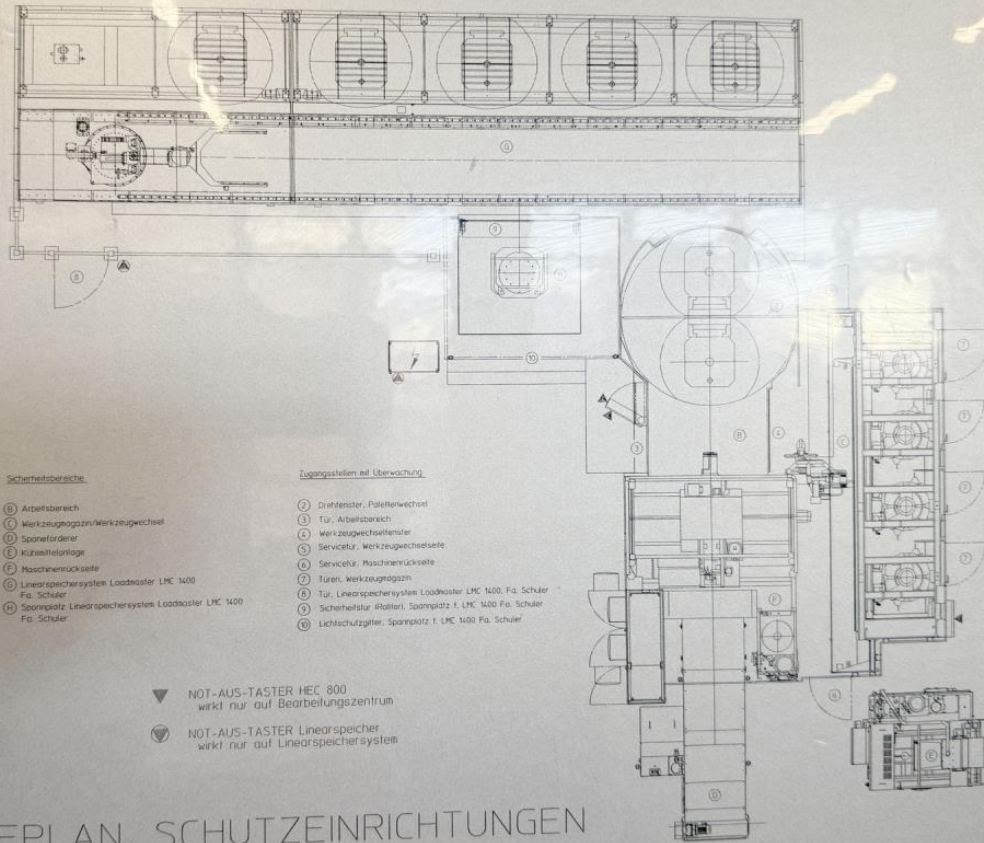












## LAGEPLAN, SCHUTZEINRICHTUNGEN



