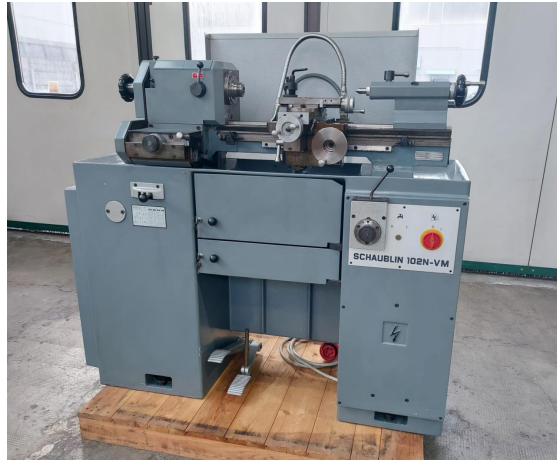




Inventory number: 23100

Centre lathe
SCHAUBLIN 102N-80 VM



Technical data

Centre height	102 mm
Distance between centres	450 mm
Swing over cross-slide	120 mm
Swing over bed	200 mm
Spindle hole	25 mm
Spindel nose for collets	W25
Taper in spindle:	
Thread	
Spindle speeds:	
number (steps)	24
from	45 rpm
up to	3100 rpm
Pitch of leadscrew	4 mm
Diameter of leadscrew	40 mm
Taper in tailstock:	2 MT
Feeds:	
number (steps)	8
length:	
from	0.02 mm/r
up to	0.3 mm/r
Voltage 50 Hz 3x	380 Volt
Spindle motor	1.5 HP
Machine's weight about	550 kg
Overall dimensions machine:	
Length	1375 mm

Width 670 mm
Height 1210 mm

Various accessories:

6-jaw chuck diameter mm

Coolant system

Driving plate

Toolholders

Set of collets

Drilling tailstock

Clutch and brake

2 drawers

Base-mounted type:



