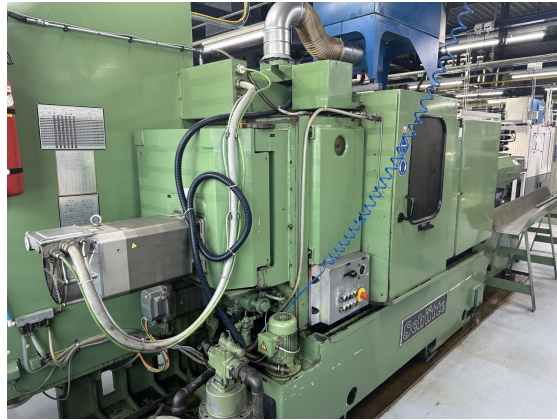




Inventory number: 23056

Multi-spindle turning lathe
SCHÜTTE SF 26 DNT



Technical data

Number of spindles	6
Capacity round bar	26 mm
Max. advance of bar	80 mm
Max. turning length	39.6 mm
Max. stroke of long slide	63 / 39.6 mm
Number of possible pieces	31
Machining rate:	
from	0.36 sec
up to	95 sec
Spindle speeds:	
from	425 rpm
up to	3000 rpm
Machining time:	
from	1 sec
up to	125 sec
Voltage 50 Hz 3x	380 Volt
Power	15 kW
Machine's weight about	4050 kg
Overall dimensions machine:	
Length	3125 mm
Width	1030 mm
Height	2150 mm
Various accessories:	
Bar loader number of bars	
Oil mist extractor	
Pick-up spindle	







