



Inventory number: 22649

Wire cutting machine
AGIE AGIECUT VERTEX
AGIEVISION
2007



Technical data

Max. dimensions of work piece:

Length	300 mm
Width	200 mm
Height	80 mm
Table load max.	35 kg
Longitudinal traverse (X-axis)	220 mm
Cross traverse (Y-axis)	160 mm
Vertical travel (Z axis)	100 mm
Taper-cut +/-	3 °

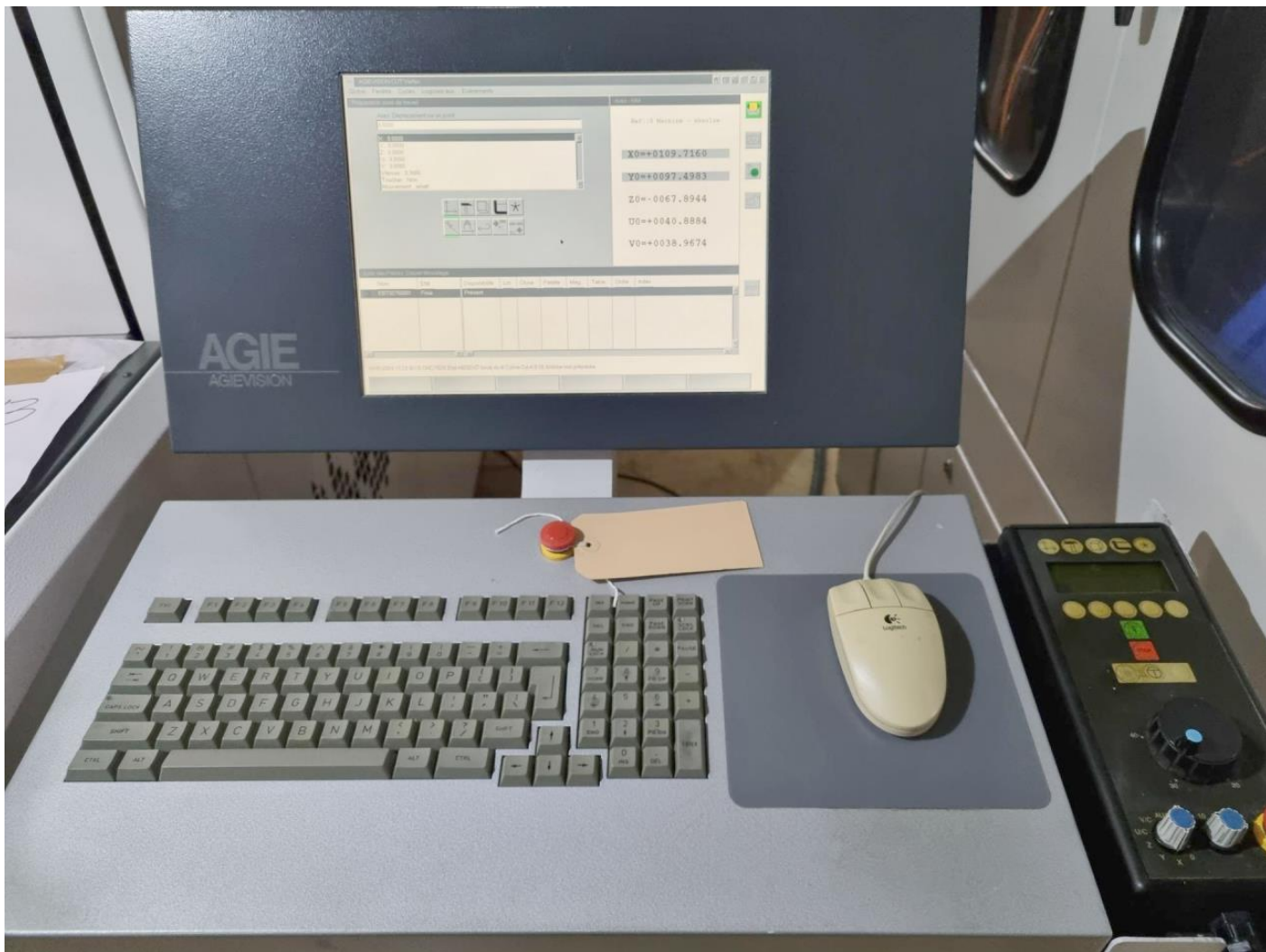
Diameter of electrode wire:

from	0.15 mm
up to	0.3 mm
Voltage 50 Hz 3x	400 Volt
Total power required	7.3 kVA
Machine's weight about	2700 kg

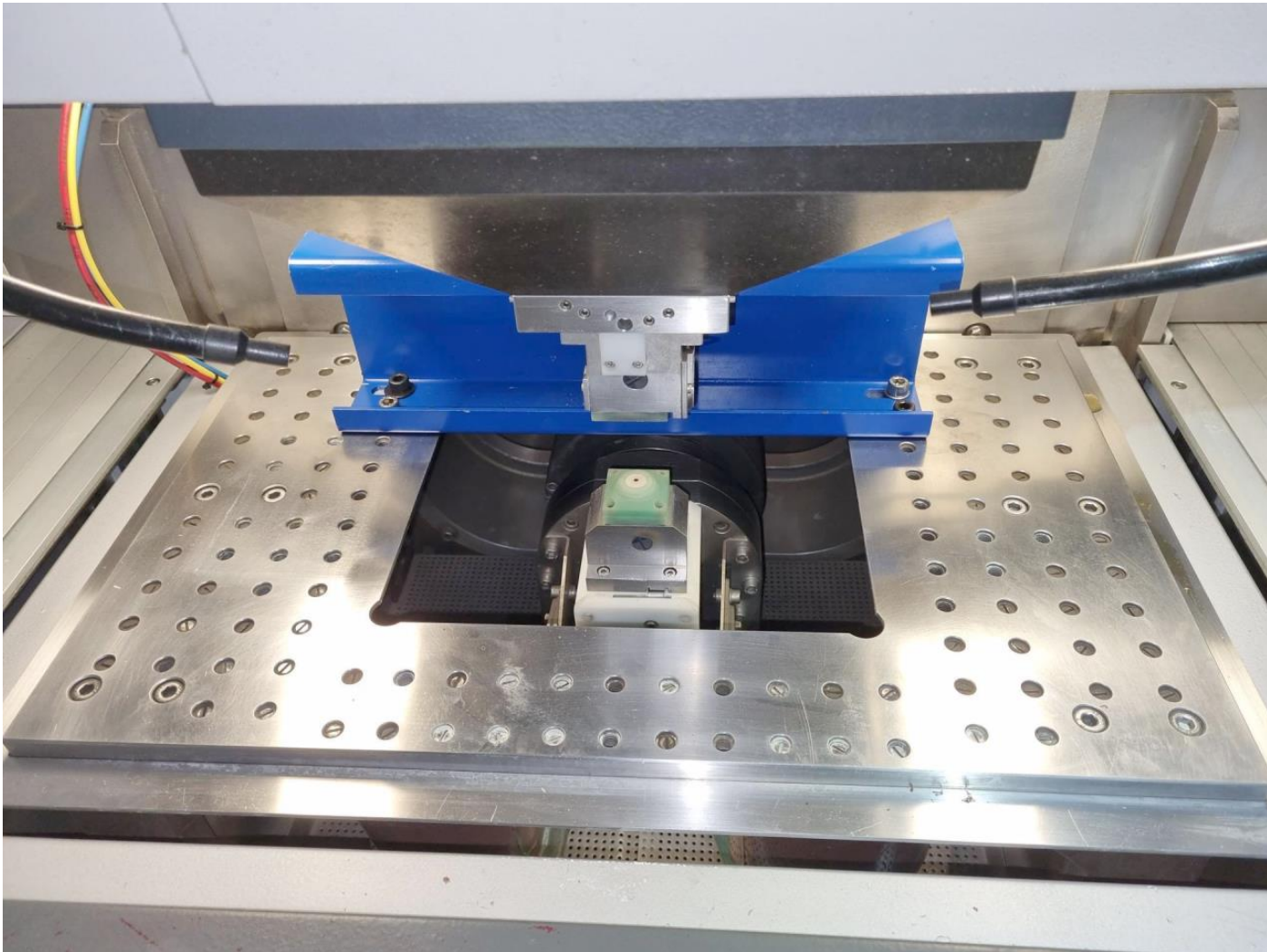
Overall dimensions machine:

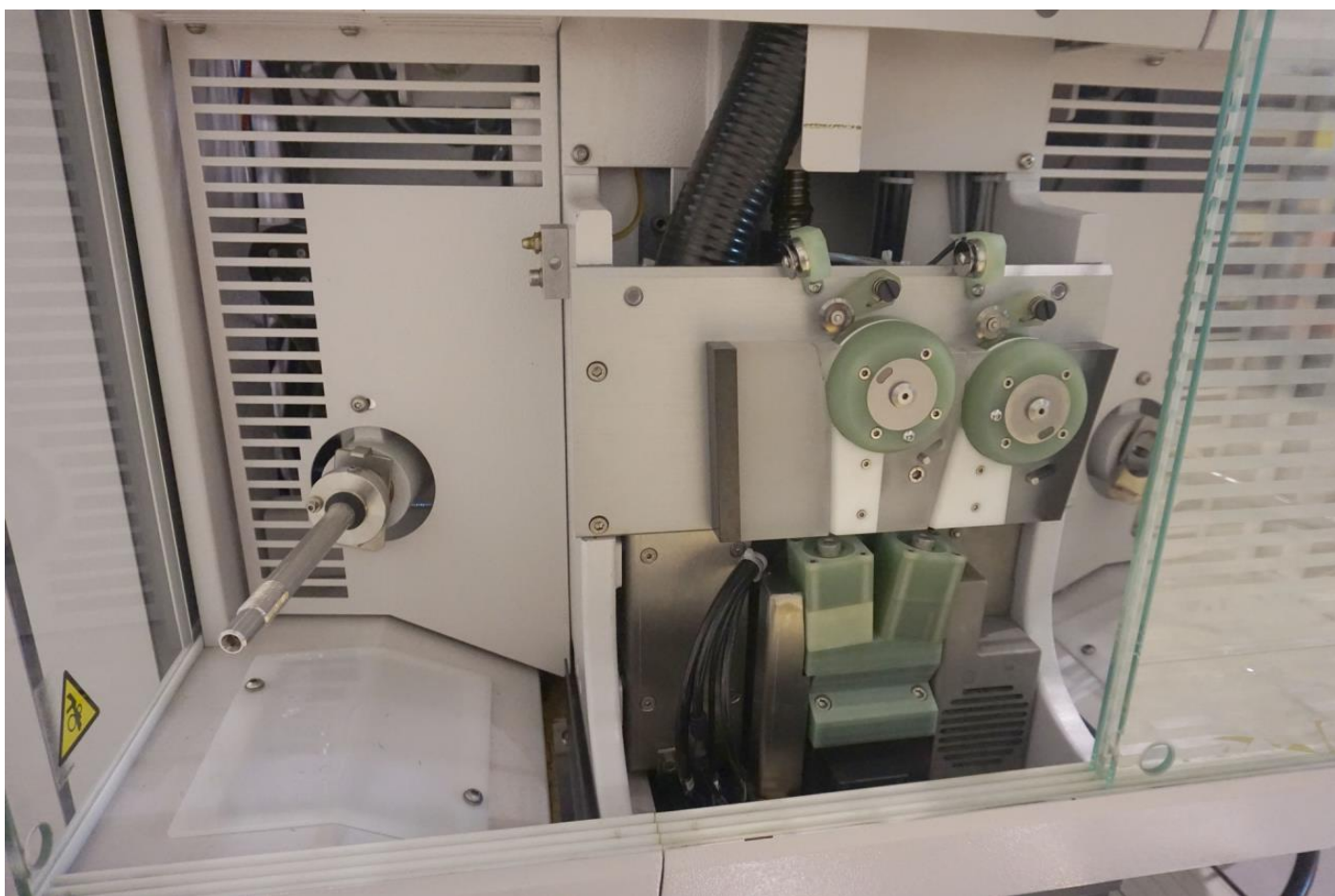
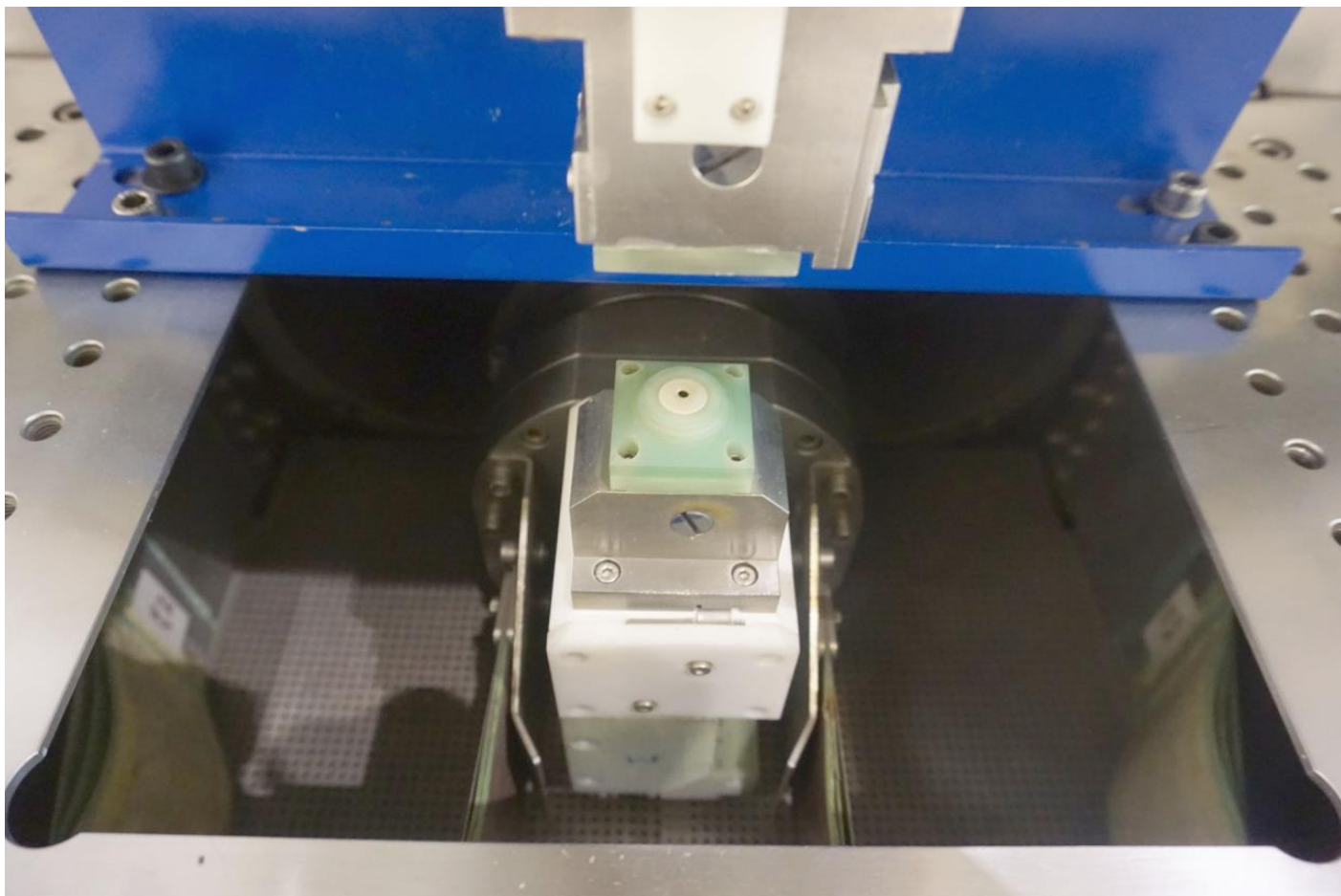
Length	2380 mm
Width	2225 mm
Height	2220 mm





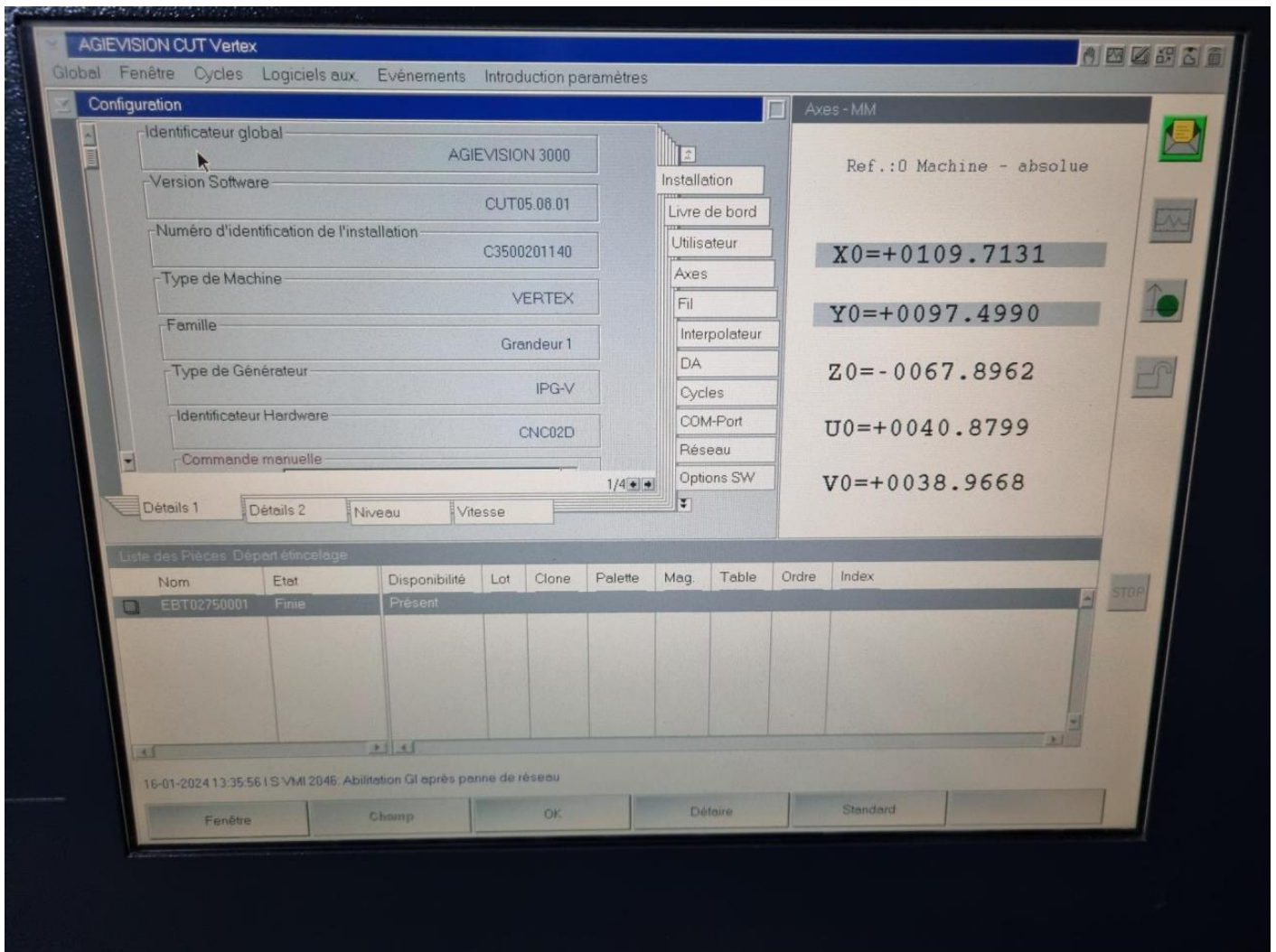






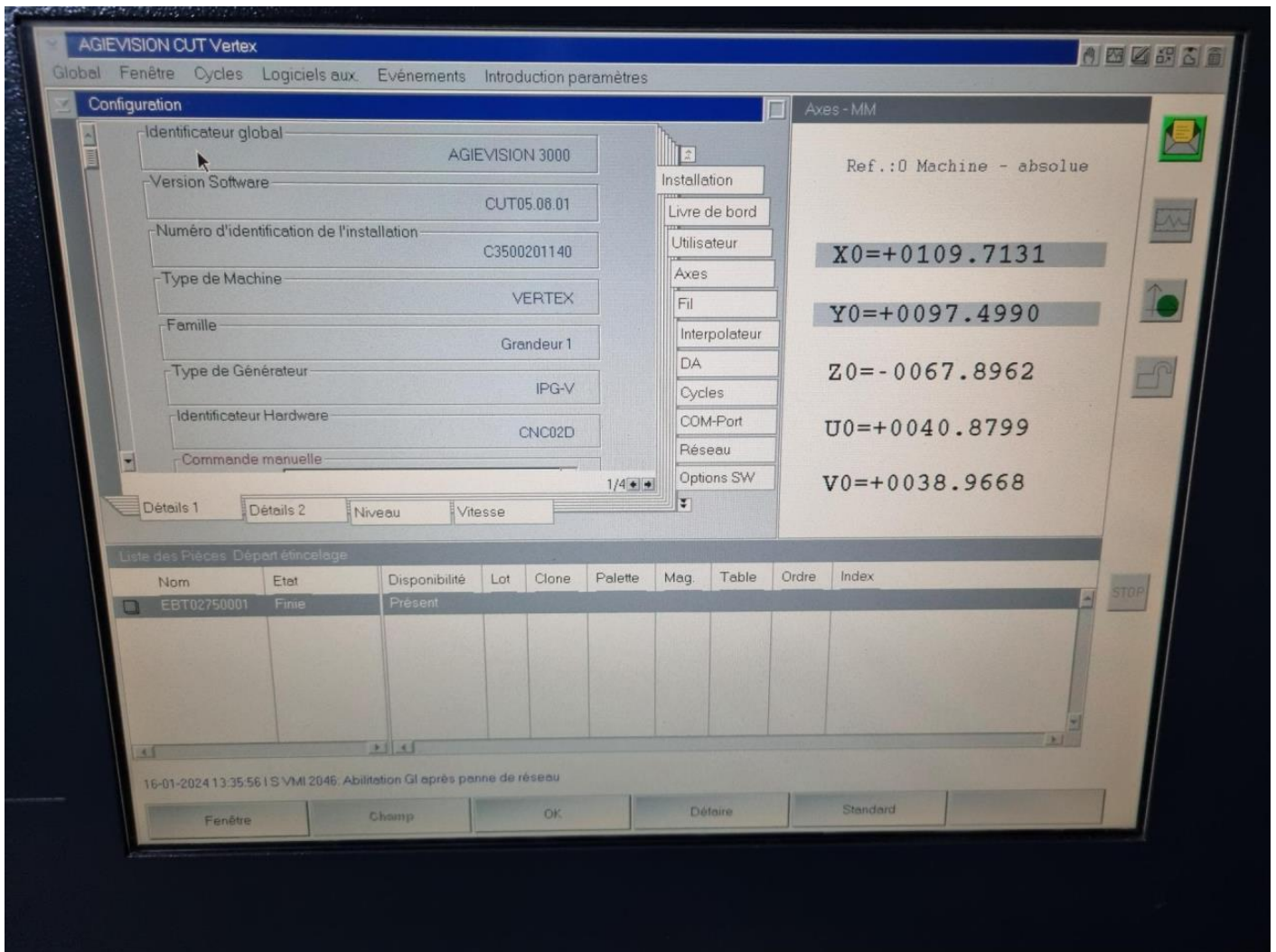


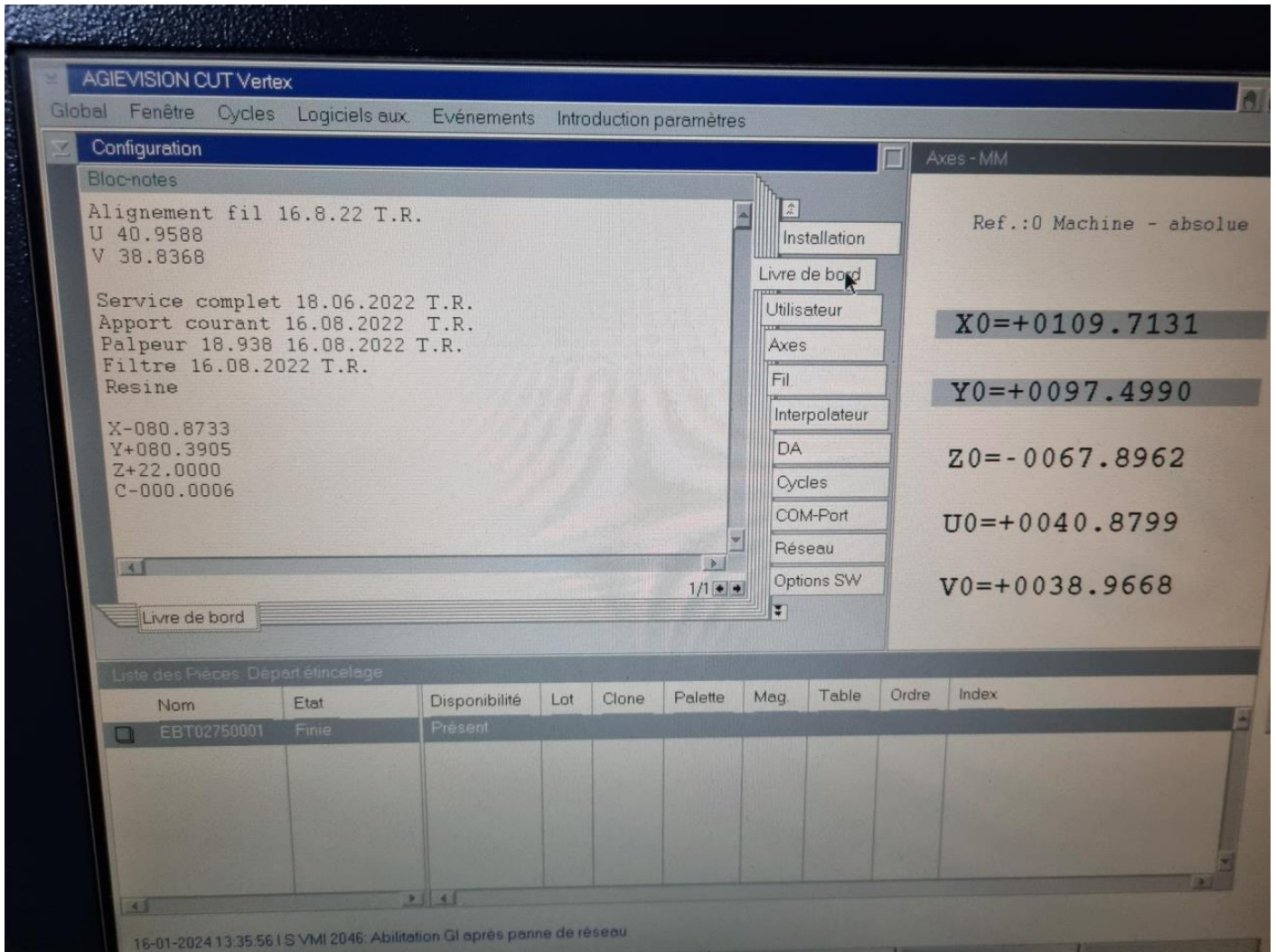


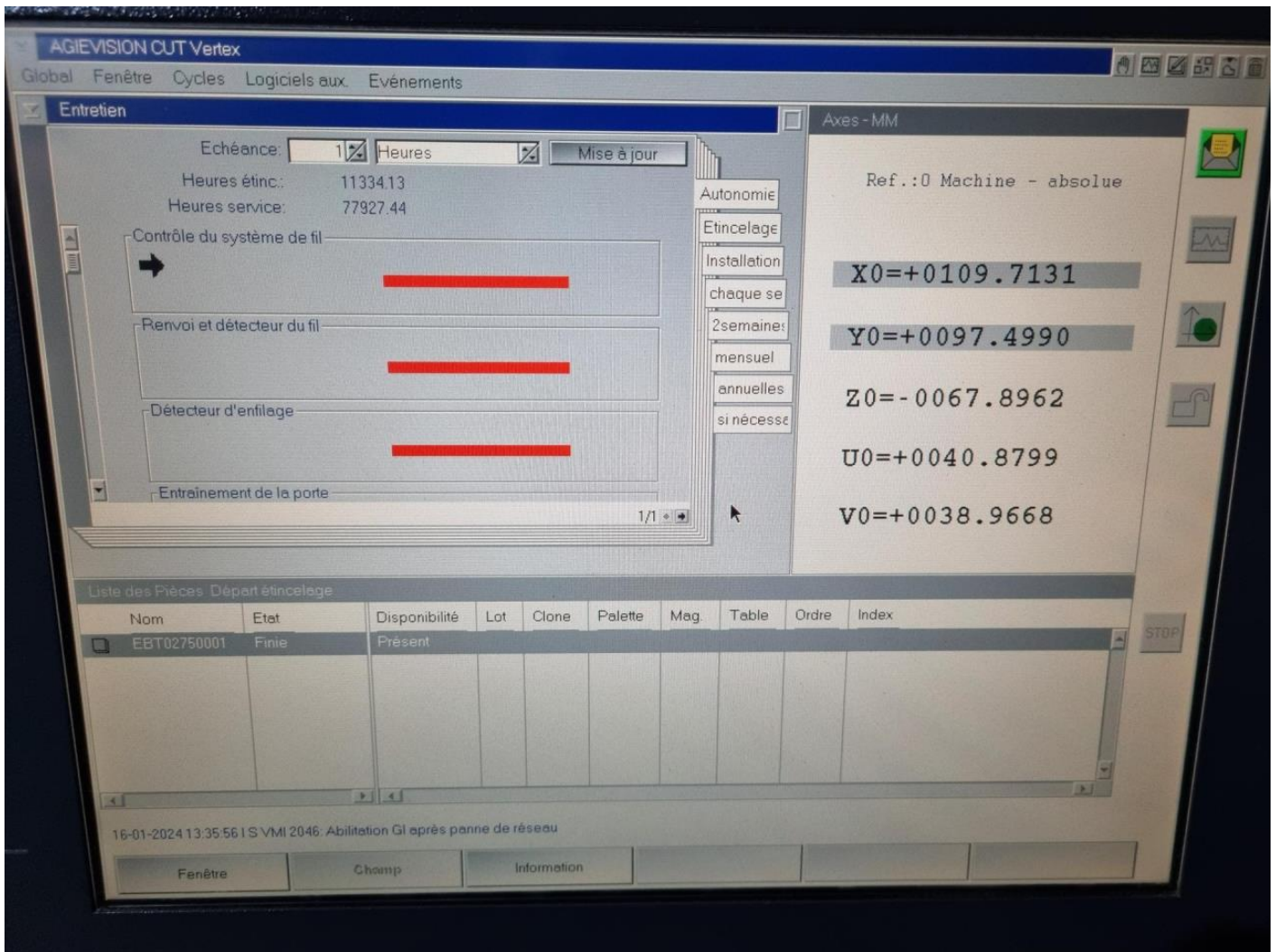


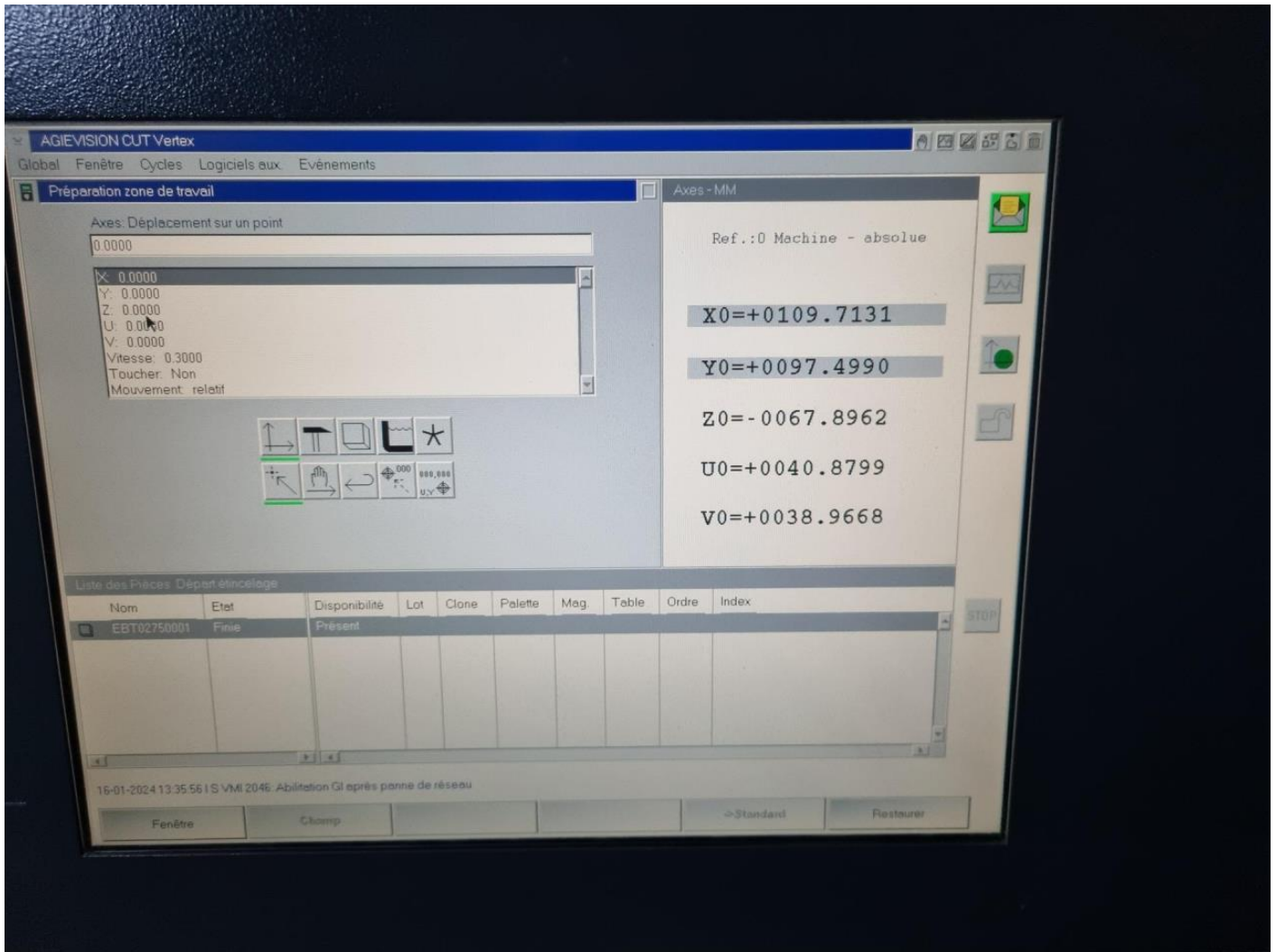


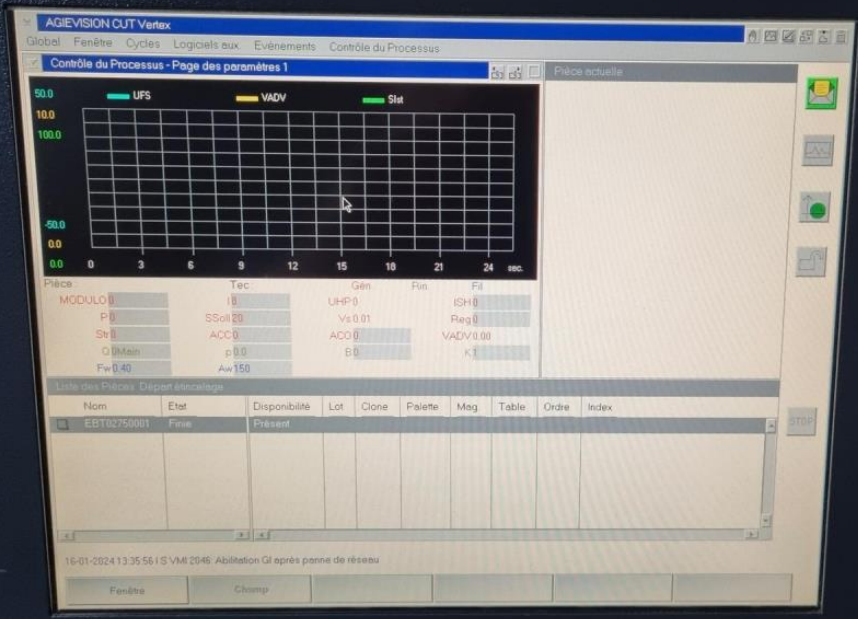
AGIE
VISION











AGIE
VISION