



Inventory number: 21916

3-axis machining center
DIGMA 500 GC
HEIDENHAIN Atek HS Plus
2000

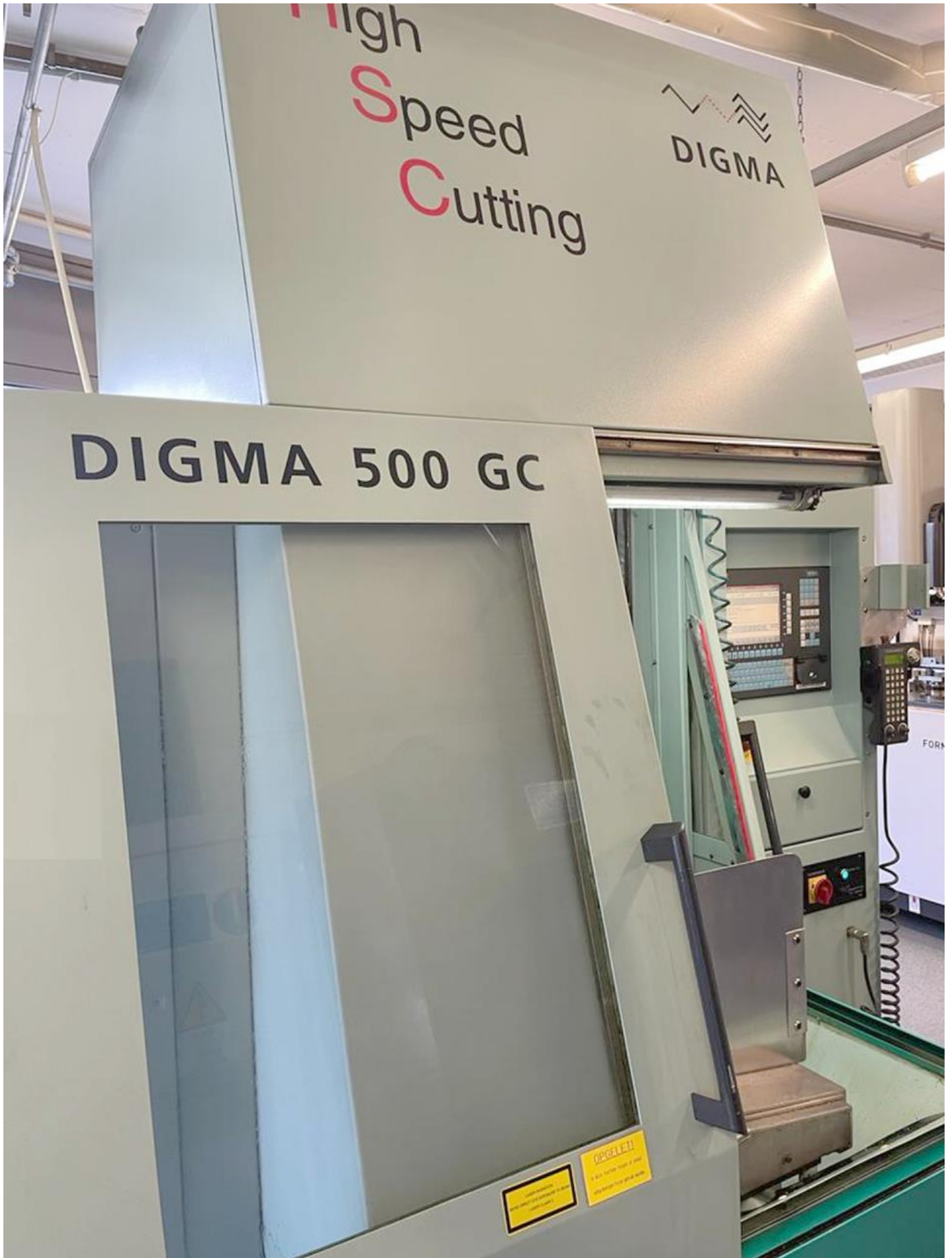


Technical data

Number of axis total	3
Table length	550 mm
Table width	450 mm
Number of T-channels	5
Distance of the T-slots	80 mm
T-channel width	18 mm
Longitudinal travel (X-axis)	500 mm
Transversal travel (y-axis)	400 mm
Vertical travel (z axis)	350 mm
Tool changer:	
Number of tools	30
Spindle nose: HSK	E40
Distance from vertical spindle to table	440 mm
Spindle speeds:	
stepless	
from	0 rpm
up to	42000 rpm
Feed range	2 - 20000 mm/min
Rapid traverse:	22 m/min
Air connect	6 bar

Voltage	50 Hz 3x	400 Volt
Spindle motor		13 kW
Total power required		16 kVA
Machine's weight about		4350 kg
Overall dimensions machine:		
Length		2700 mm
Width		2200 mm
Height		2800 mm
Various accessories:		
Set of toolholders		
Coolant system		
Handwheel electroinic		
Lamp		
High frequency spindle		42000 rpm
Workpiece loader		EROWA ROBOT X
Number of positions		120
Switch cabinet Air conditioner		
Keyboard		















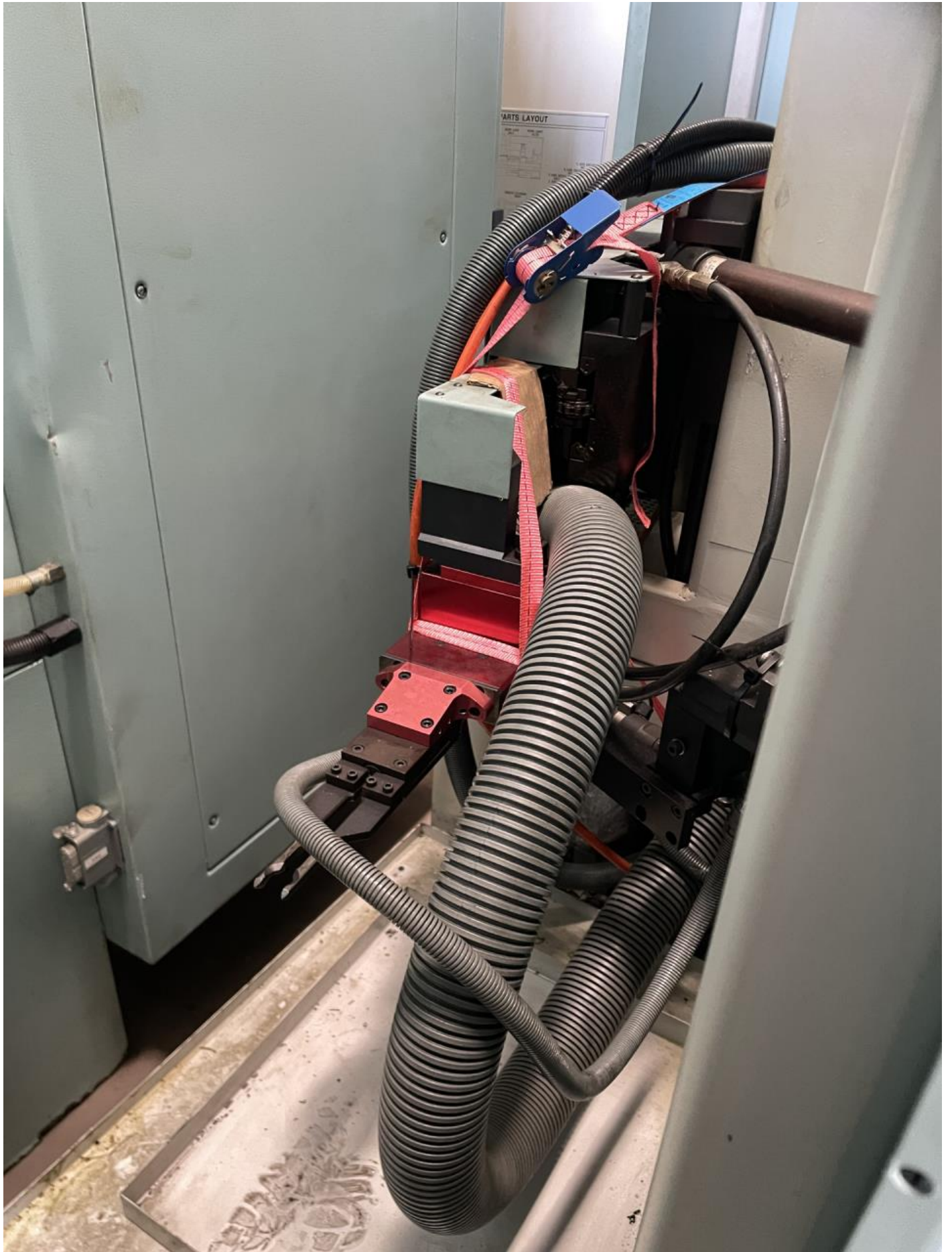














EROWA[®]

ROBOT X



