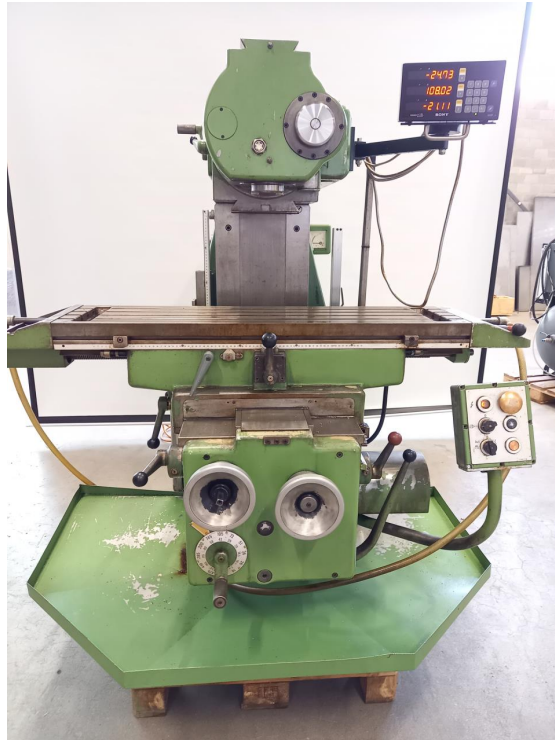




Inventory number: 21349

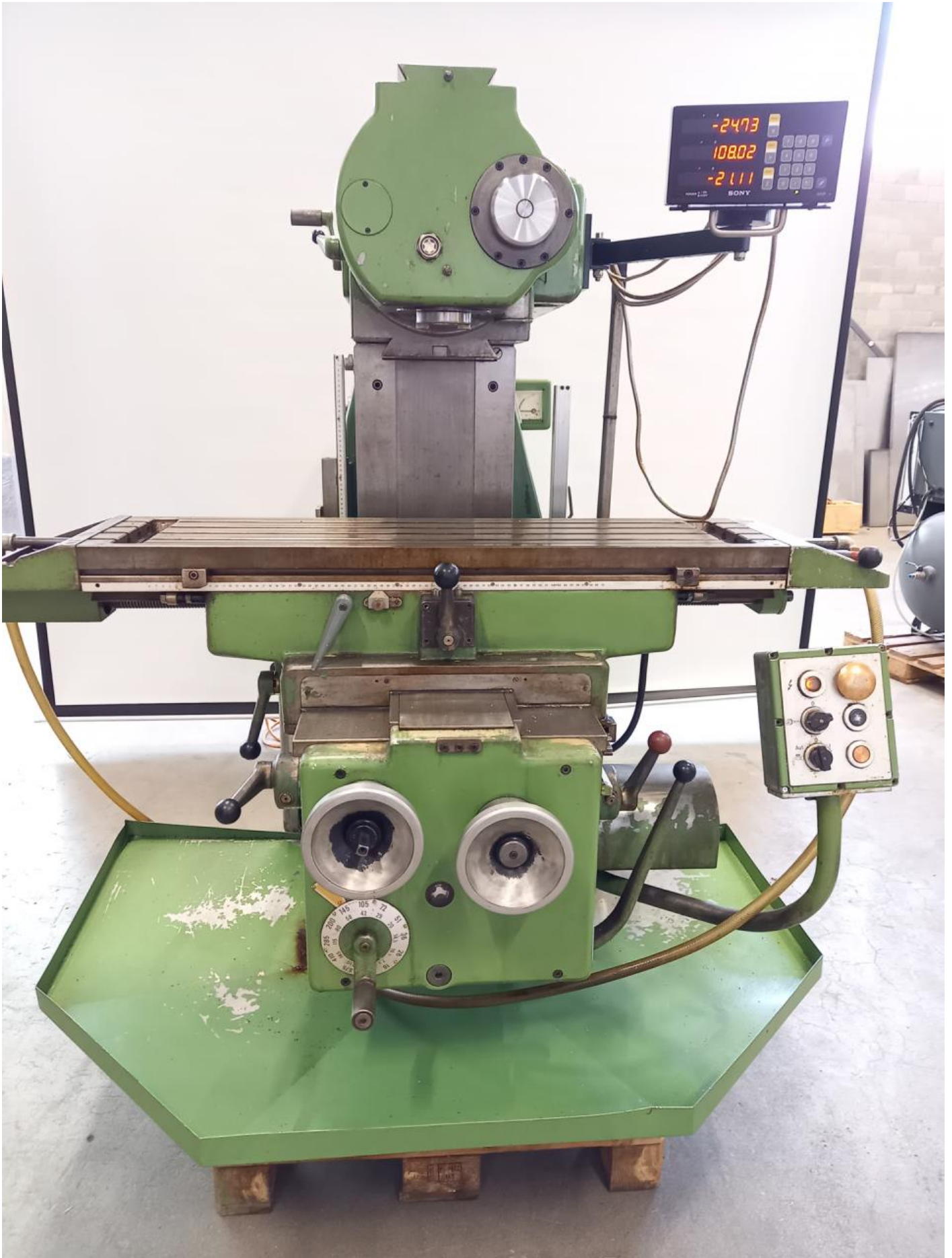
Universal milling machine
REIDEN FU 100



Technical data

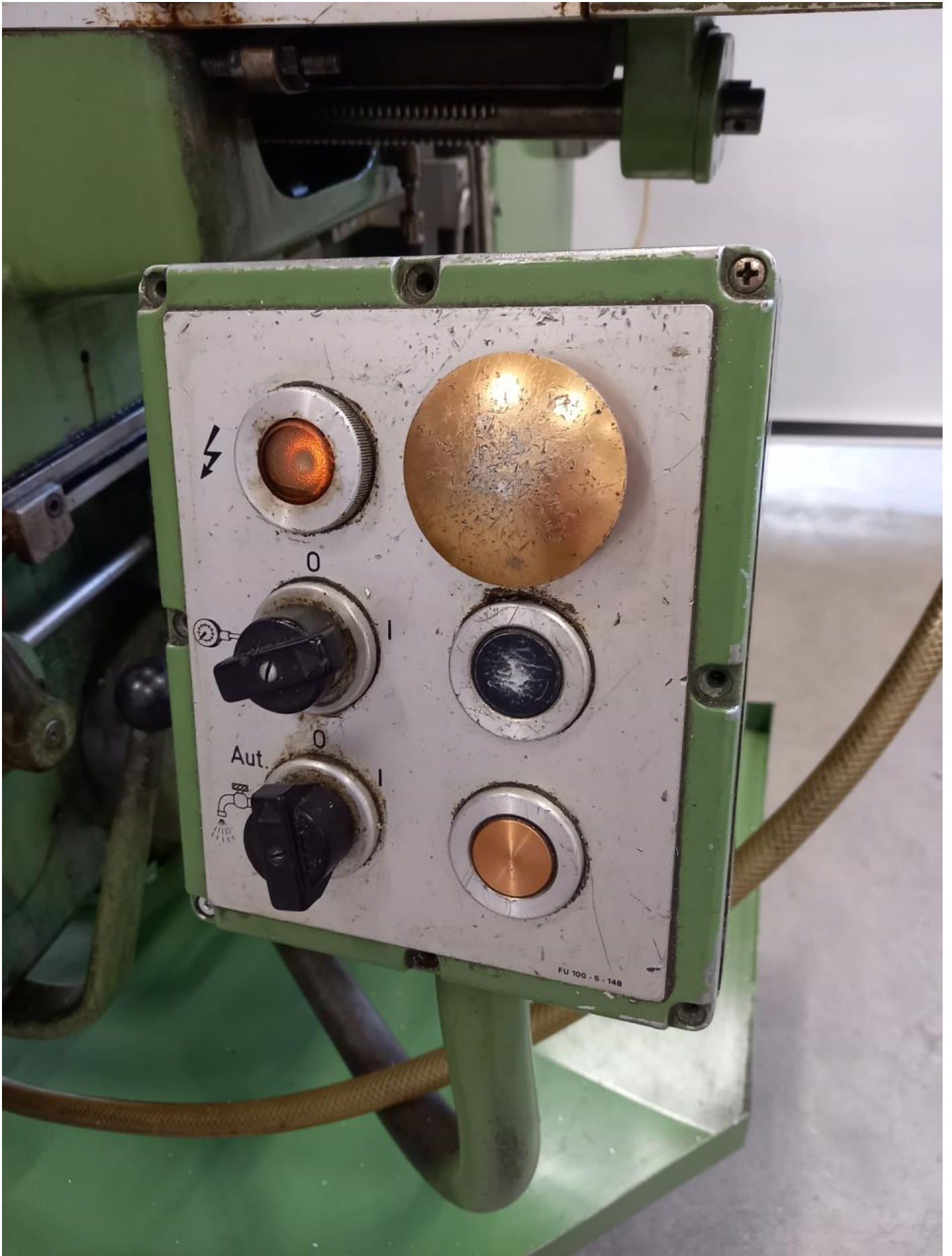
Table length	900 mm
Table width	300 mm
Longitudinal travel (X-axis)	700 mm
Transversal travel (y axis)	250 mm
Vertical travel (z axis)	370 mm
Travel of the upper slide	400 mm
Spindle speeds:	
number (steps)	12
from	45 rpm
up to	2000 rpm
Taper in spindle	40 ISO
Feeds steps:	12
longitudinal from	18 mm/min
up to	800 mm/min
transversal from	18 mm/min
up to	800 mm/min
vertical from	7.2 mm/min
up to	320 mm/min
Rapid traverse:	

longitudinal	2.5 m/min
transversal	2.5 m/min
vertical	1.0 m/min
Voltage 50 Hz 3x	380 Volt
Motor output	6 HP
Machine's weight about	1900 kg
Overall dimensions machine:	
Length	2000 mm
Width	1600 mm
Height	1700 mm
Various accessories:	
Digital readout number of axis:	3

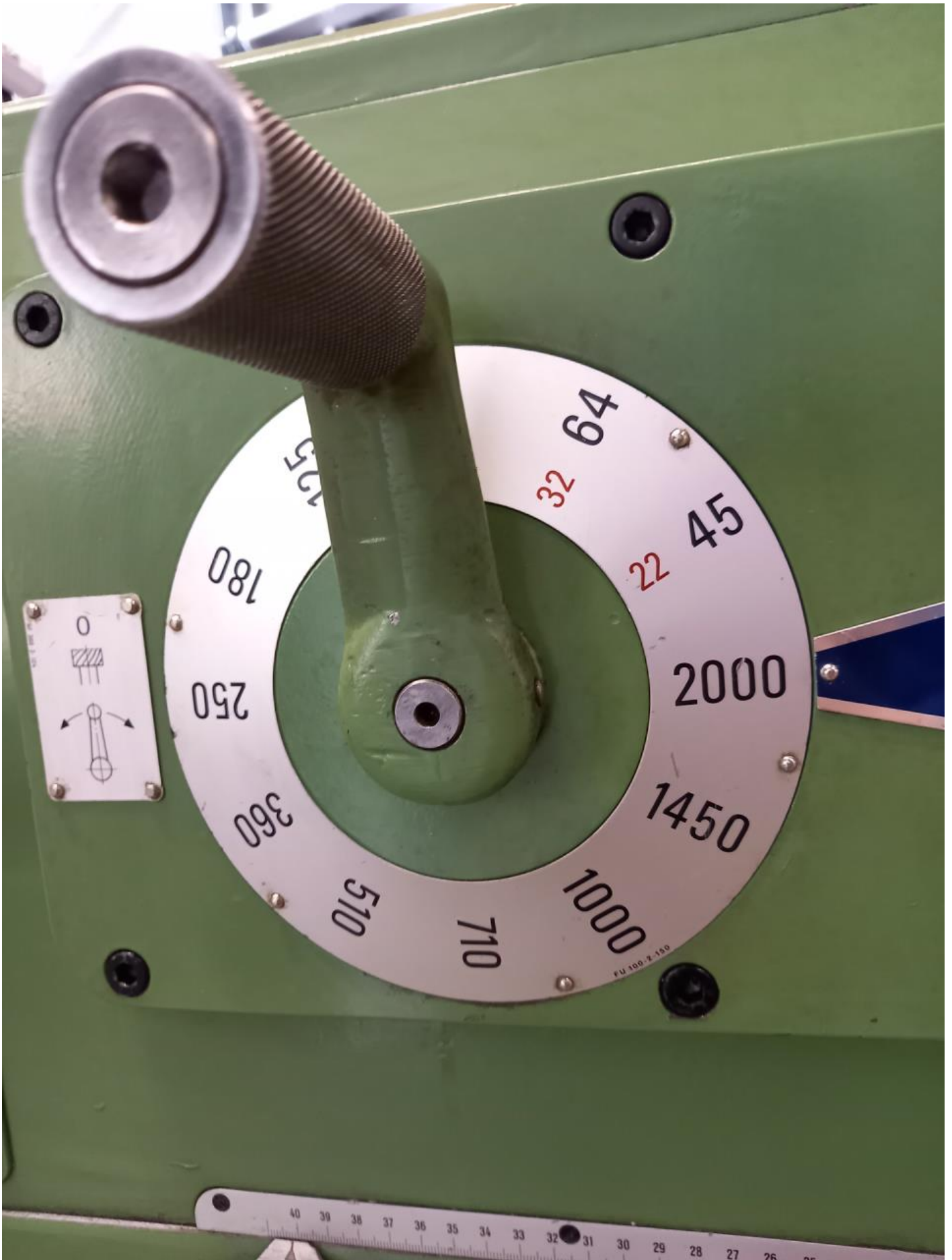


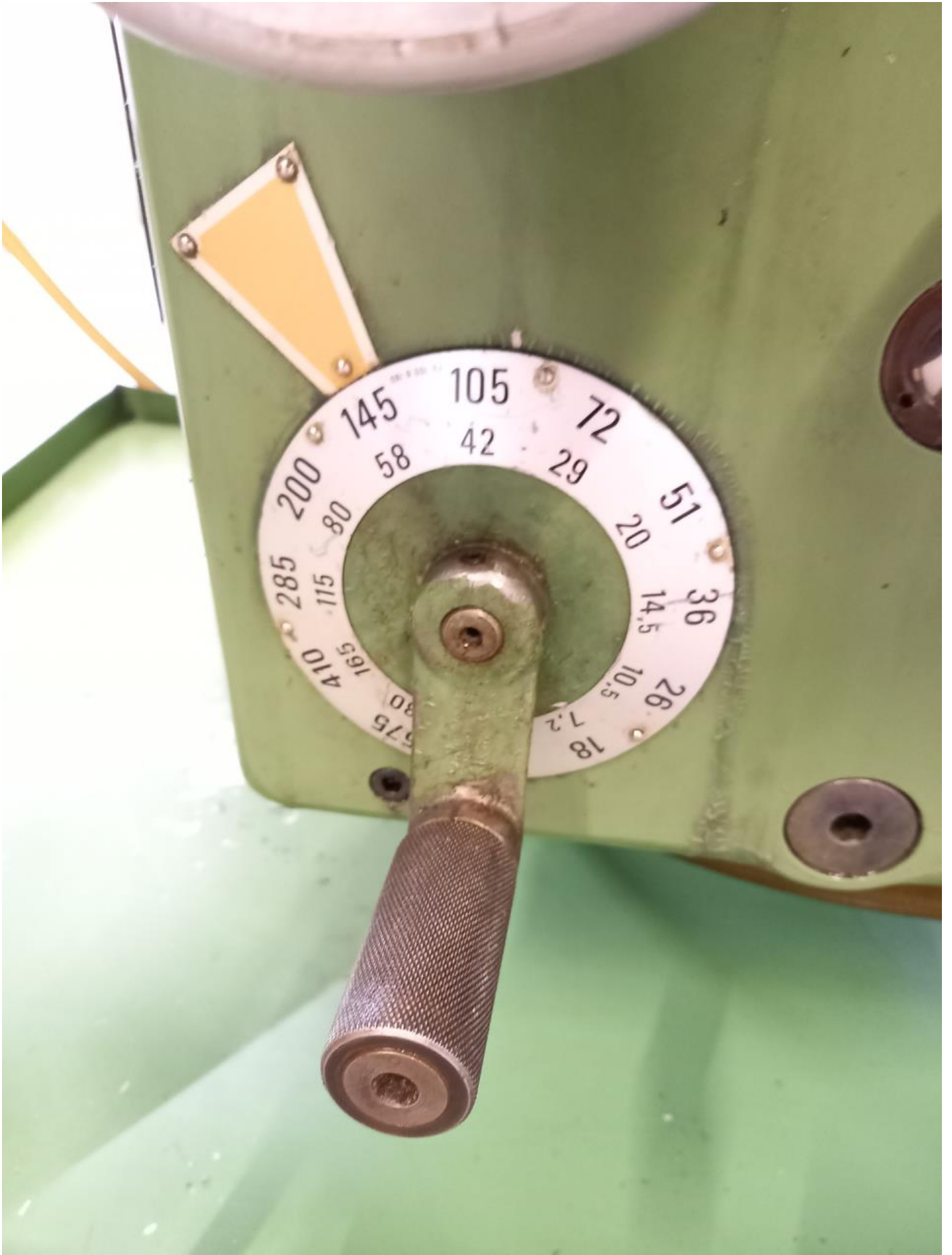


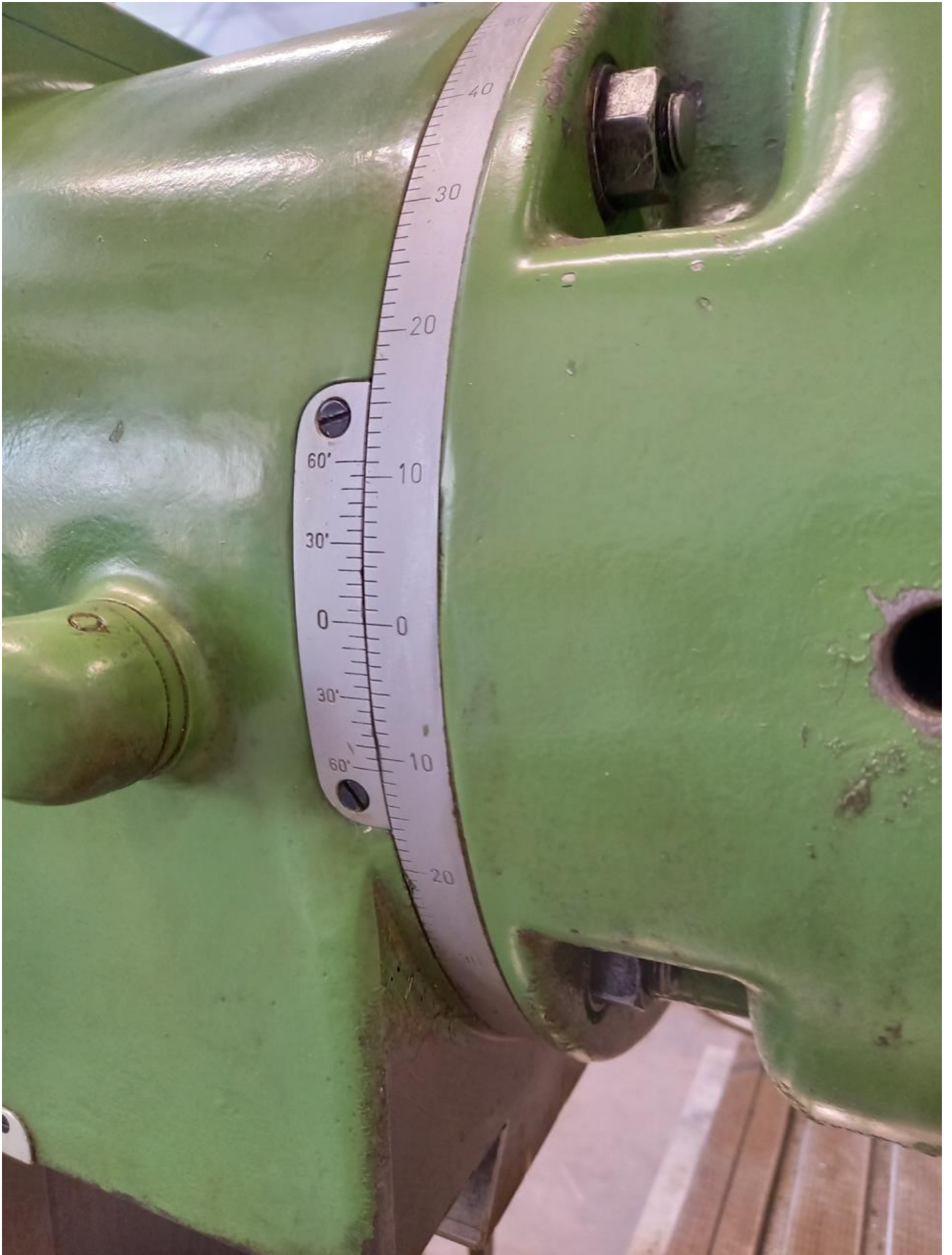


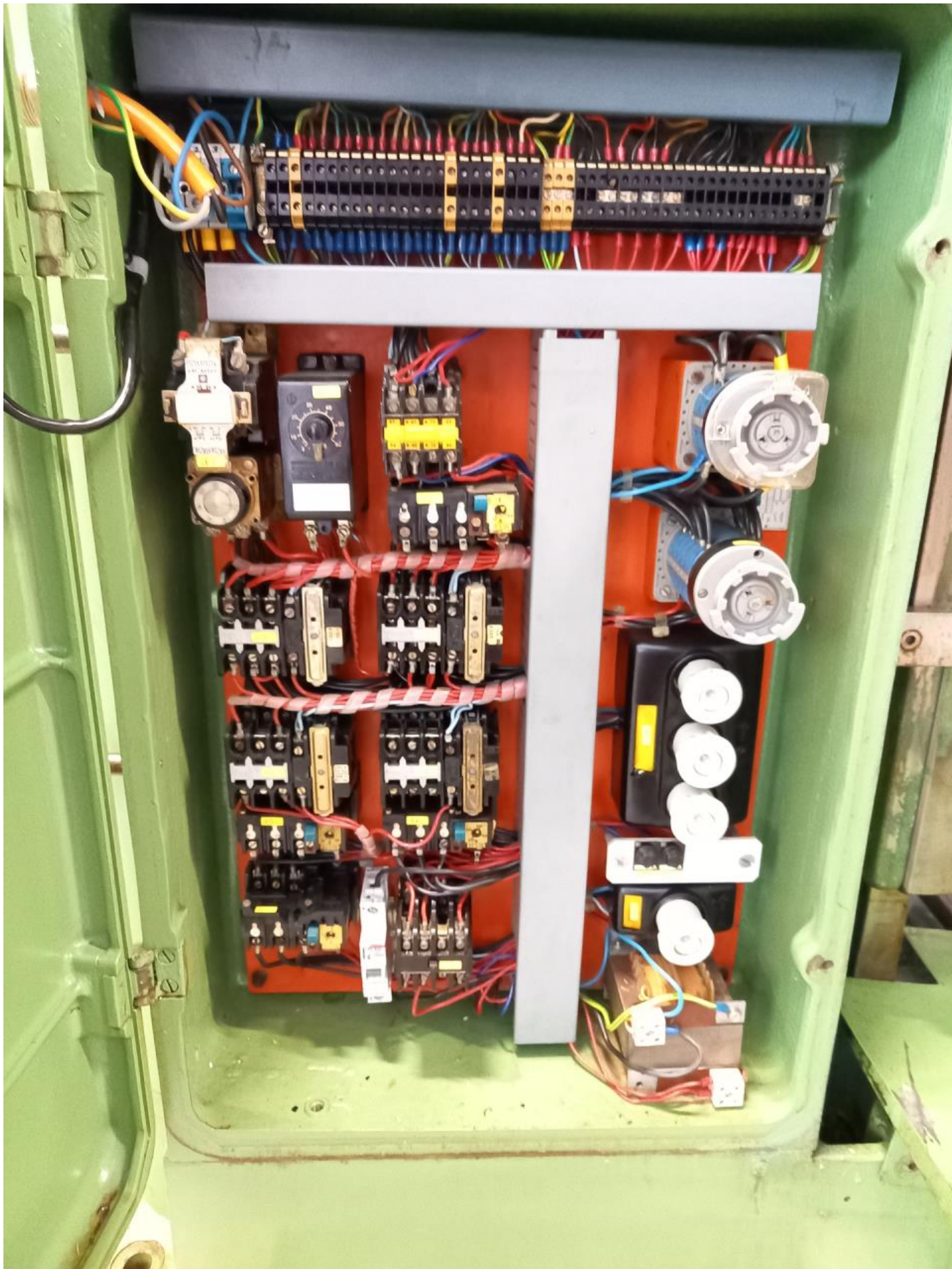














n =	22	32	45	64	90	125	180	250	360	510	710	1000	1450	2000
5							3	4	6	8	11	16	23	32
10						4	6	8	10	16	22	31	45	63
15					4	6	8	12	17	24	33	47	63	94
20				4	6	8	11	16	22	32	45	63	91	125
25			3,5	5	7	10	14	20	28	40	56	79	114	155
30		3	4	6	9	12	17	24	34	48	67	94	137	190
35	2,5	3,5	5	7	10	14	20	27	40	56	78	110	160	220
40	3	4	6	8	11	16	23	31	45	64	89	125	180	250
50	3,5	5	7	10	14	20	28	39	57	80	110	155	225	310
60	4	6	9	12	17	24	34	47	68	96	134	190	270	380
70	5	7	10	14	20	27	40	55	79	110	155	220	320	440
80	5,5	8	11	16	23	31	45	63	90	125	180	250	365	500
90	6	9	13	18	25	35	51	70	100	145	200	280	410	570
100	7	10	14	20	28	39	57	78	115	160	225	310	455	630
110	8	11	16	22	31	43	62	86	125	175	245	350	500	690
130	9	13	18	26	37	51	74	100	145	210	290	400	590	820
150	10	15	21	30	43	59	85	118	170	240	335	470	685	940
175	12	18	25	35	50	68	100	135	200	280	390	550	800	
200	14	20	28	40	57	78	113	155	225	320	445	630	910	
250	17	25	35	50	71	98	143	195	285	400	560	780		

FU 100-2-15