



Inventory number: 18581

Press brake

BEYELER RT80x2050-CNC

Cybelelec S-DNC-8879-PS



### Technical data

Pressure	800 kN
Total working length	2050 mm
Distance between the standards	2050 mm
Standard depth of throat	255 mm
Slide stroke, working stroke:	
from	215 mm
Mounting height max.	390 mm
Working speed:	
Press stroke	8 mm/s
up	60 mm/s
Voltage 50 Hz 3x	380 Volt
Motor power	5.5 kW
Machine's weight about	6700 kg
Overall dimensions machine:	
Length	3700 mm
Width	2000 mm
Height	3400 mm

Various accessories:

Set of bending tools  
Set of retaining clamps  
Motorized stop

500 mm



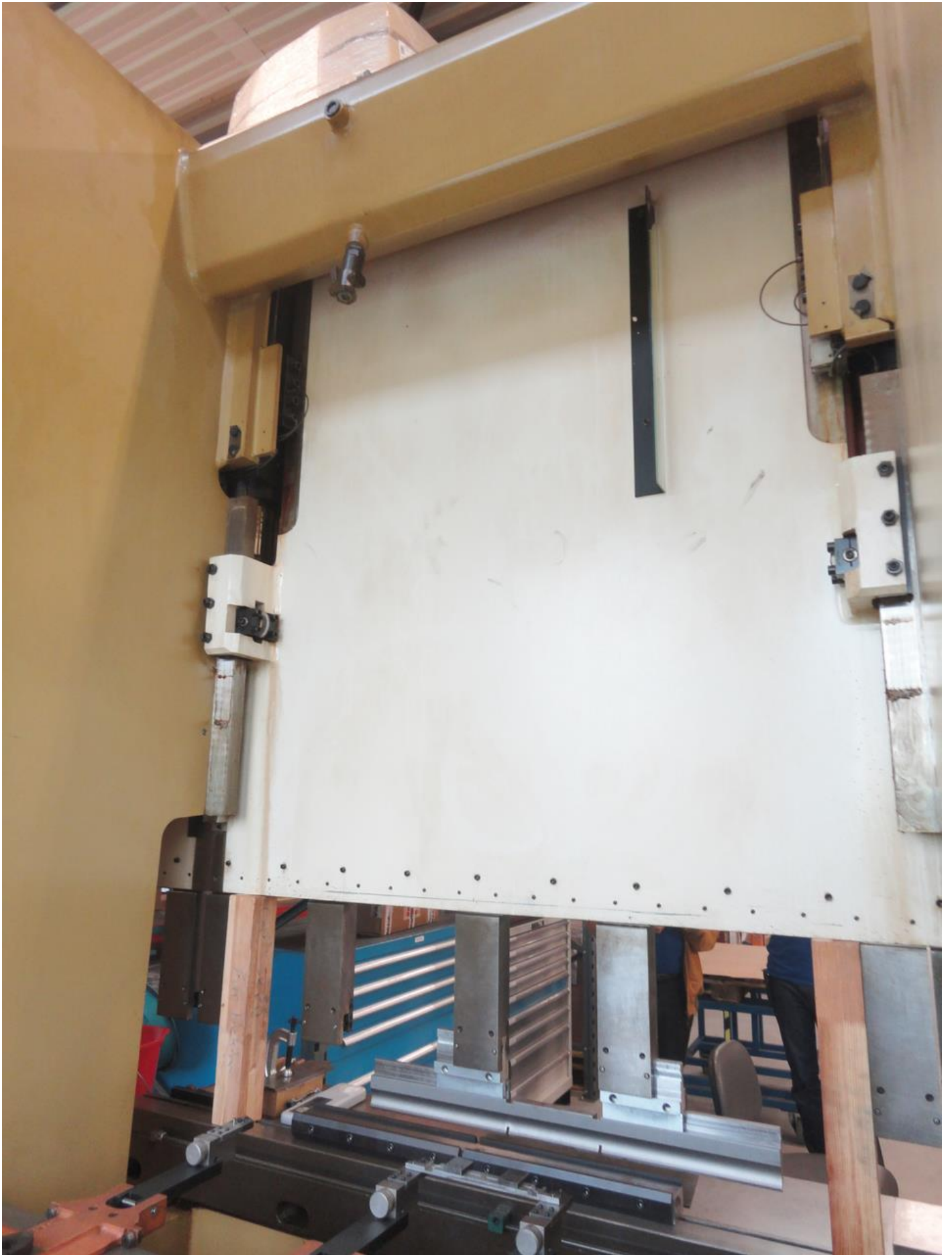
















# Beyeler

MACHINES S.A.

CISAILLES & PRESSES HYDRAULIQUES

1030 BUSSIGNY - LAUSANNE (SUISSE)

Tél.(021) 89.49.49 - Télex 459552 - Téléfax (021) 89.32.86

Fabrication Suisse - Swiss made - Schweizer Fabrikat

MODELE

RT 80X2050-CNC

SERIE

N° 87'2294



