



Inventory number: 12396

Multi-spindle turning lathe SCHÜTTE SF 26



Technical data

Number of spindles	6
Capacity round bar	26 mm
Max. advance of bar	80 mm
Max. turning length	39.6 mm
Max. stroke of long slide	63 / 39.6 mm
Number of possible pieces	31
Machining rate:	
from	0.36 sec
up to	95 sec
Spindle speeds:	
from	355 rpm
up to	5000 rpm
Voltage 50 Hz 3x	380 Volt
Power	15 kW
Machine's weight about	4000 kg
Overall dimensions machine:	
Length	3125 mm
Width	1030 mm
Height	2000 mm
Various accessories:	
Automatic bar loader (num. bars)	IEMCA PRA 40/33P
Coolant system	
Thread rolling attachment	1 x
Longitudinal slide number	2
Drilling unit with independent feed	6 x
Appareil à rouler les filôts à commande mécanique	

Tool break control

Turret number of tools

6 x

Threading attachment

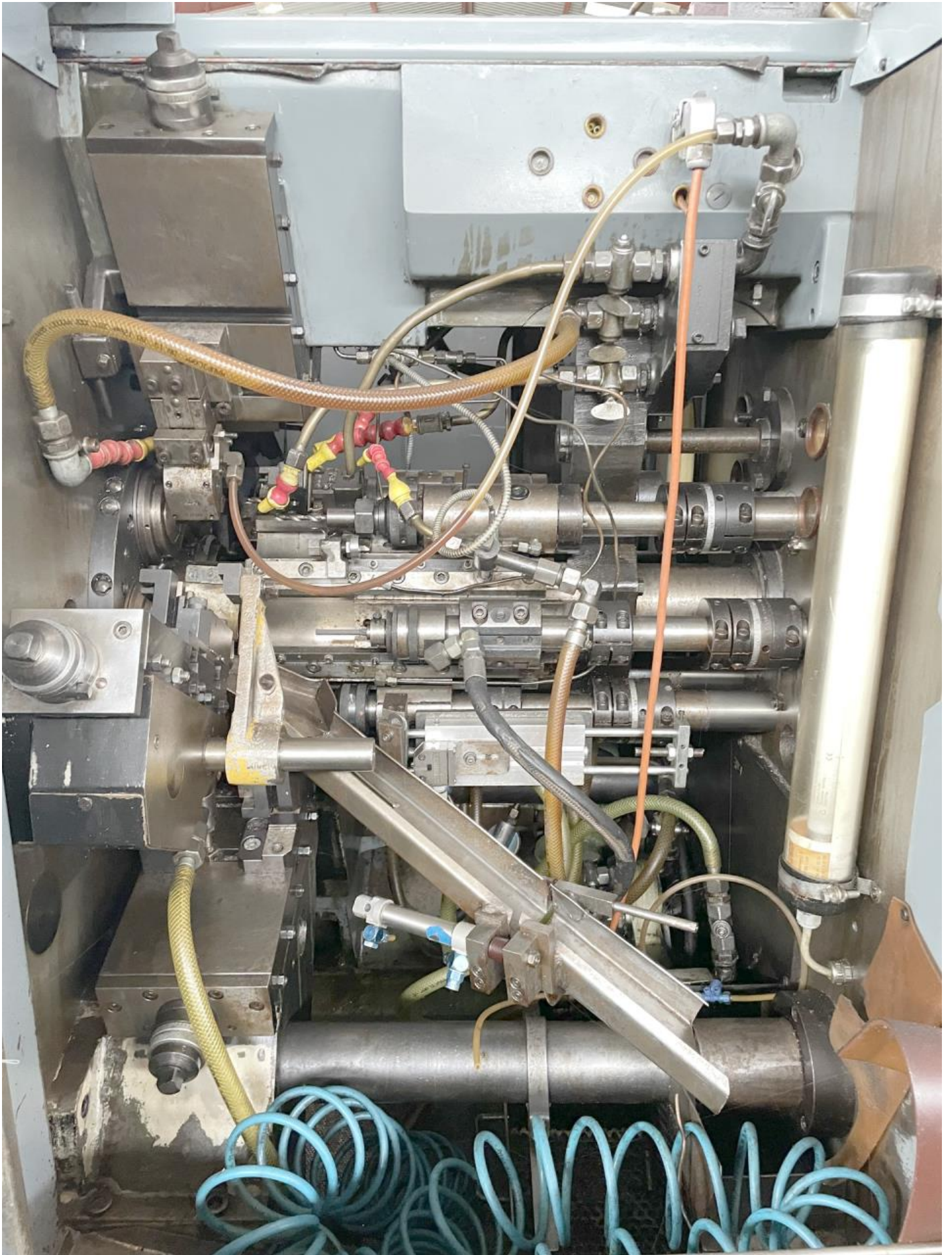
tangent.

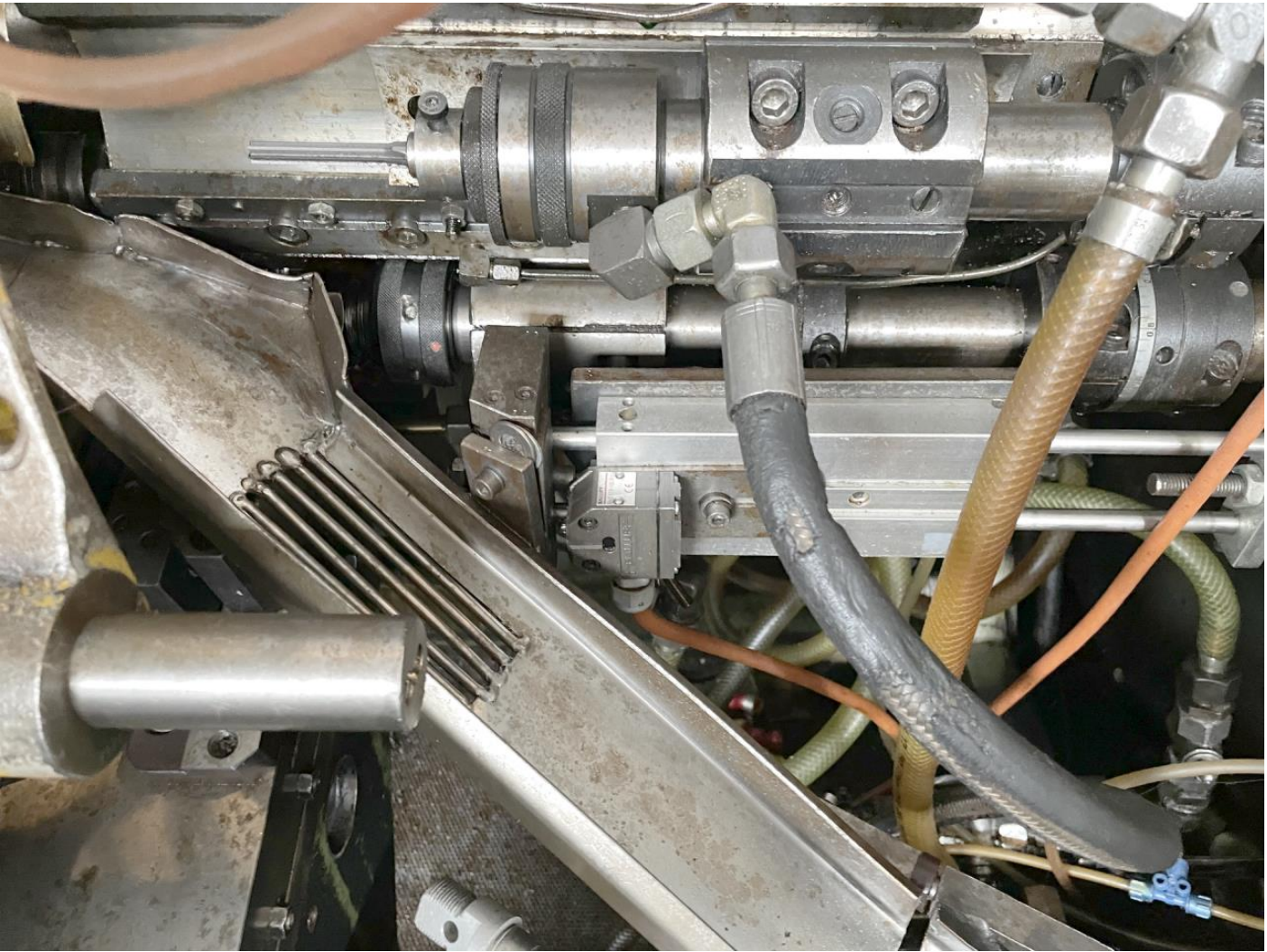














LIMITS			INPUT			OPERATION		
	C1	C2	7	8	9	RESET		
LIMIT SET	C3	C4	4	5	6	AUTO	SET UP	MEMORY
	MENU I	MENU II	1	2	3	OPERATE		
			0	ENTER		SERVICE		SYSTEM

BRANKAMP **Widatronic 8060**

BRANKAMP
Widatronic 8060

