



Inventory number: 12390

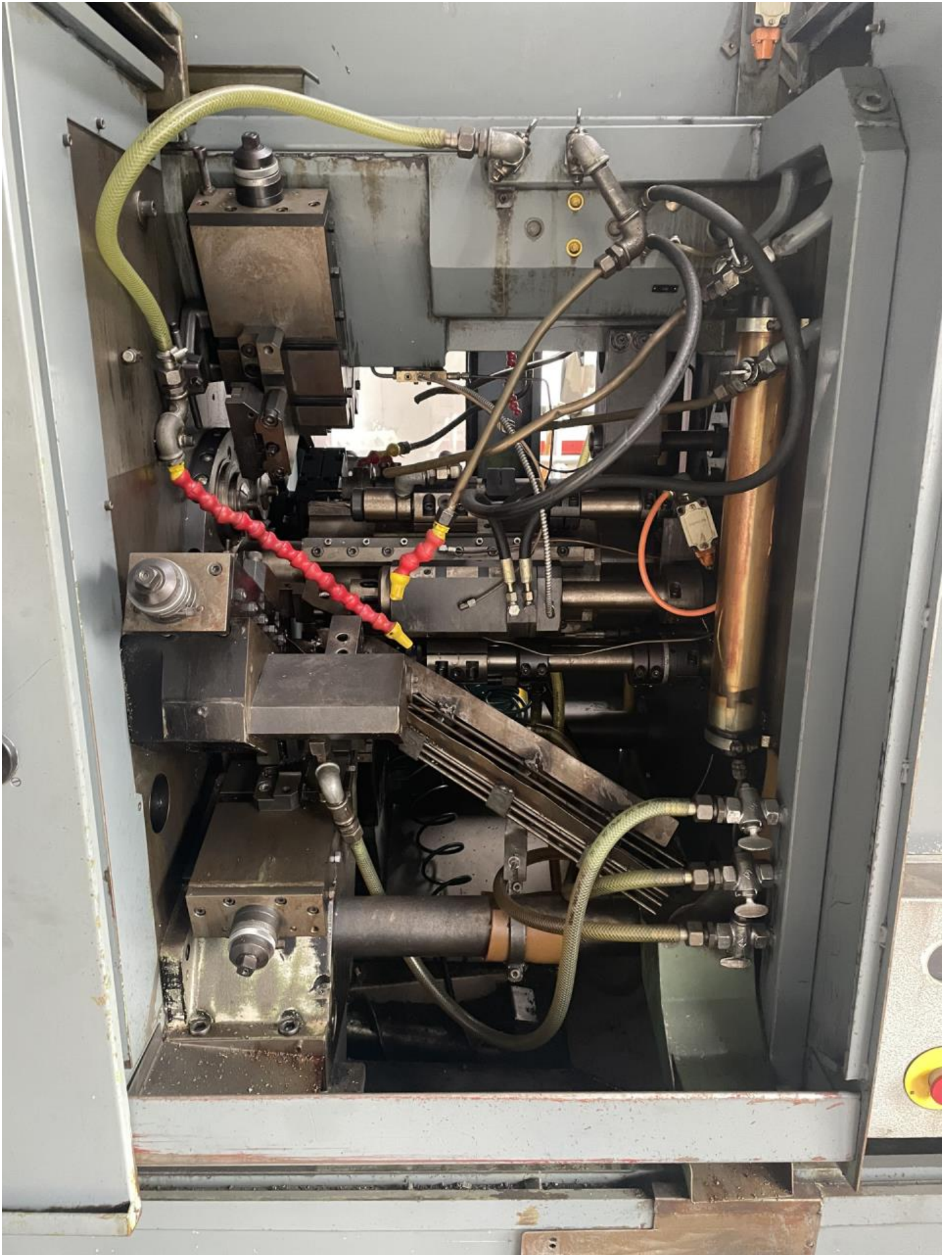
Multi-spindle turning lathe
SCHÜTTE SF 26

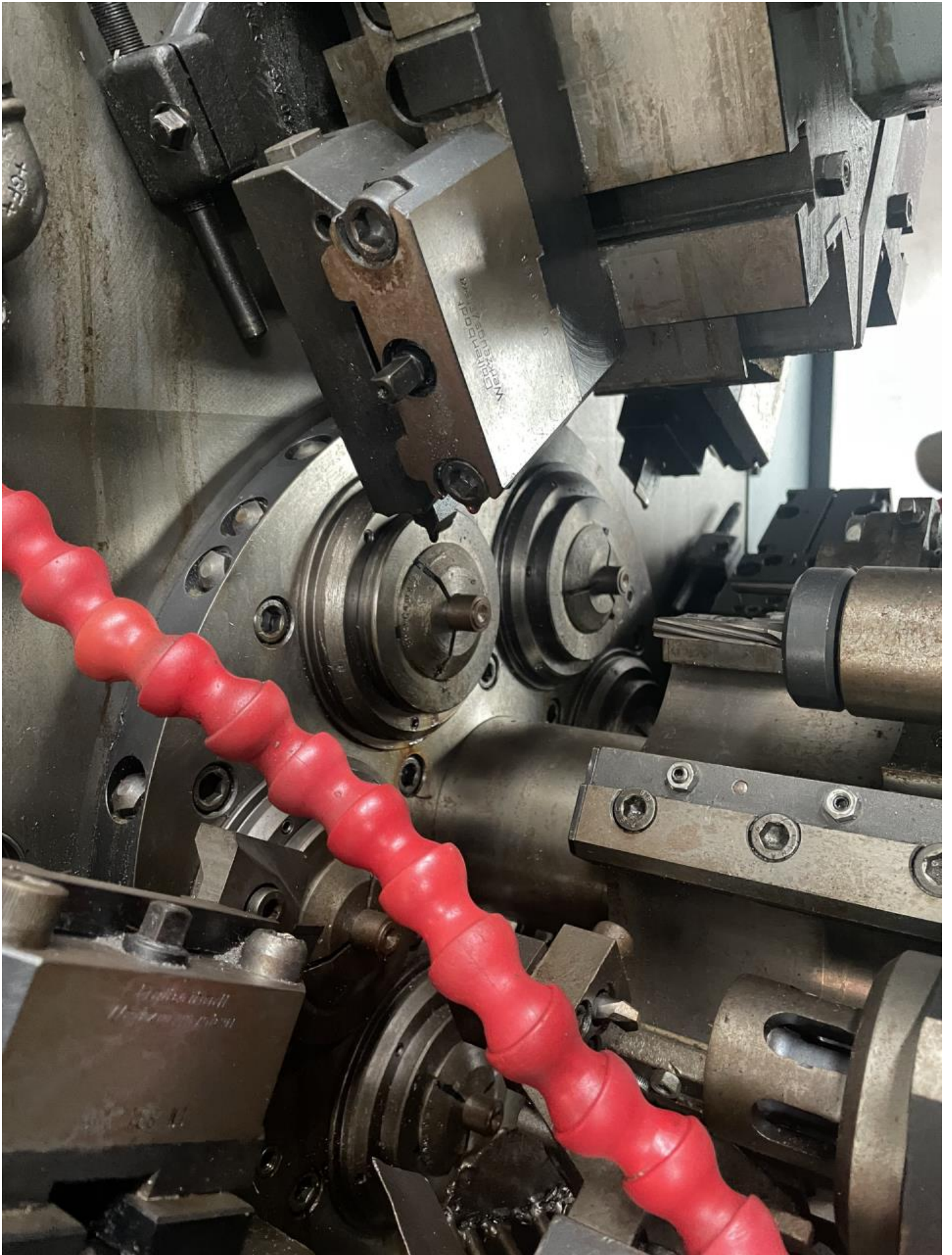


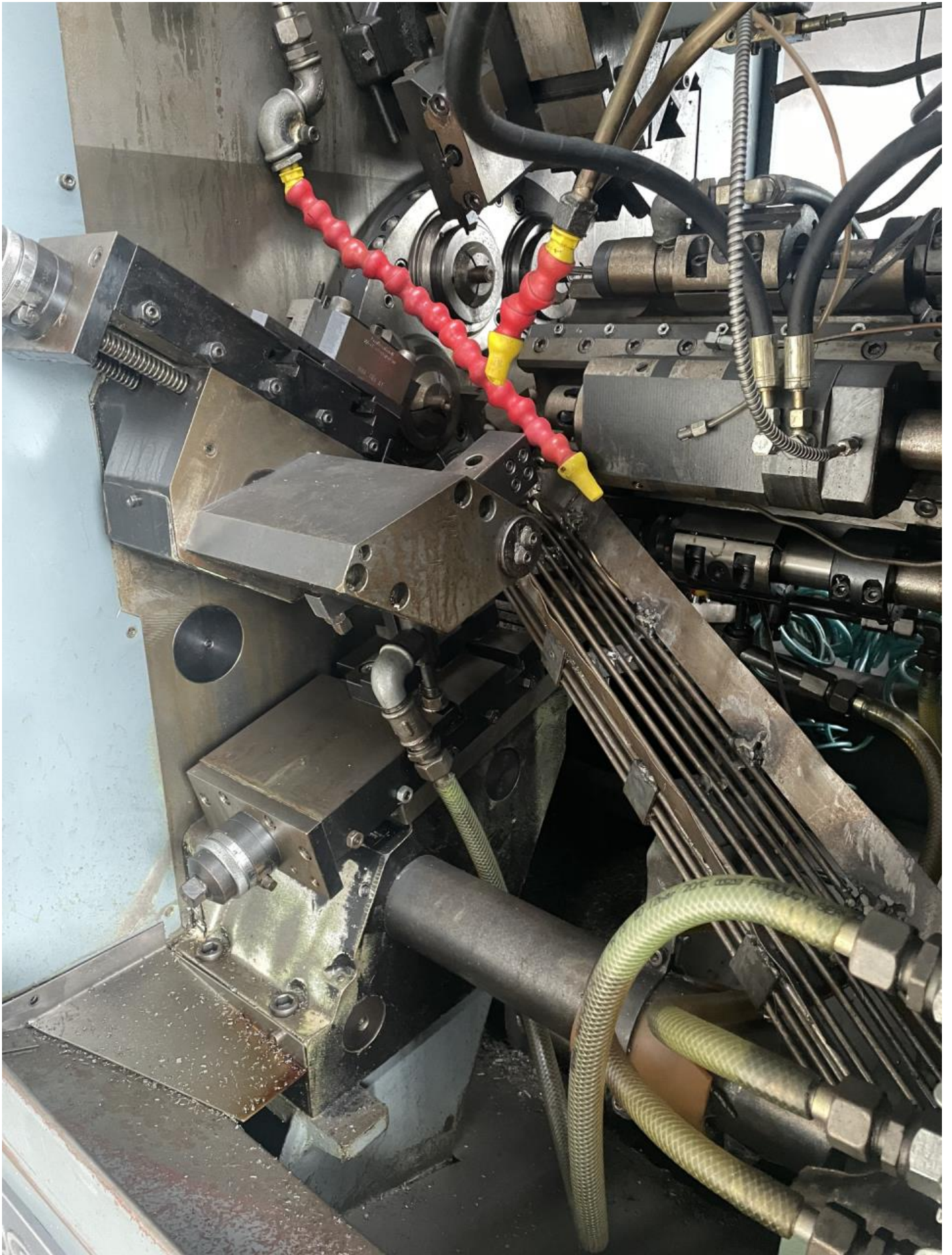
Technical data

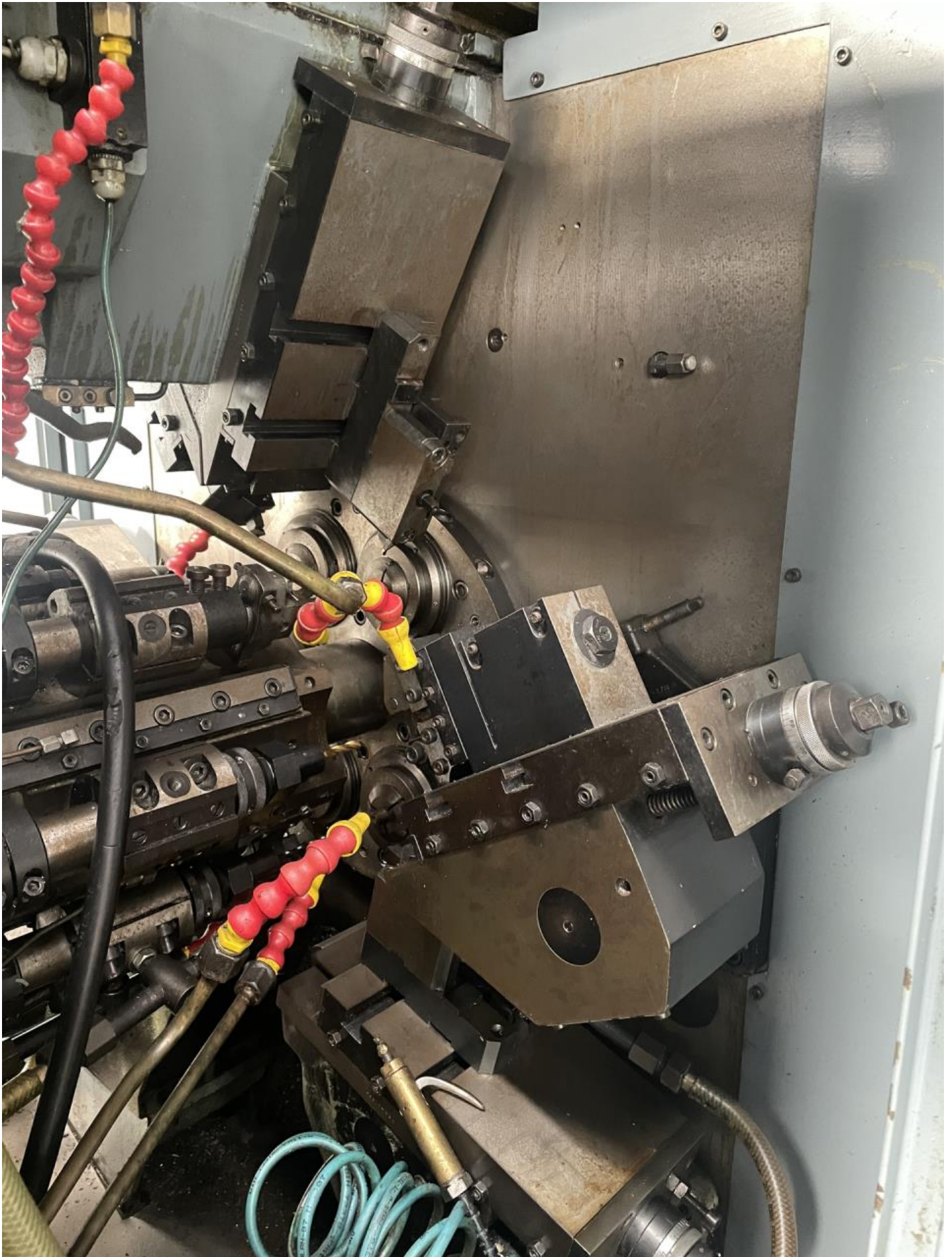
Number of spindles	6
Capacity round bar	26 mm
Max. advance of bar	80 mm
Max. turning length	39.6 mm
Max. stroke of long slide	63 / 39.6 mm
Number of possible pieces	31
Machining rate:	
from	0.36 sec
up to	95 sec
Spindle speeds:	
from	355 rpm
up to	5000 rpm
Voltage 50 Hz 3x	380 Volt
Power	15 kW
Machine's weight about	4000 kg
Overall dimensions machine:	
Length	3125 mm
Width	1030 mm
Height	2000 mm
Various accessories:	
Bar feeder	
Longitudinal slide number	2
Tool break control	
Back working unit	













Control panel for BRANKAMP Widatronic 8060. The panel features a large rectangular display screen at the top. Below the screen is a control interface divided into three main sections: LIMITS, INPUT, and OPERATION.

- LIMITS:** Includes a home button, buttons for C1, C2, C3, C4, a LIMIT SET button, and MENU I / MENU II buttons.
- INPUT:** A numeric keypad with buttons for digits 0-9 and an ENTER button.
- OPERATION:** Includes a RESET button, AUTO, SET UP, and MEMORY buttons, and a rotary switch labeled OPERATE with SERVICE and SYSTEM positions.

At the bottom of the panel, the BRANKAMP logo and the model name "Widatronic 8060" are printed.





