

**SAM 020518****KELLER Type ENA 1.0-V**

**Group** Dust extractor  
**Manufacturer** KELLER  
**Type** ENA 1.0-V

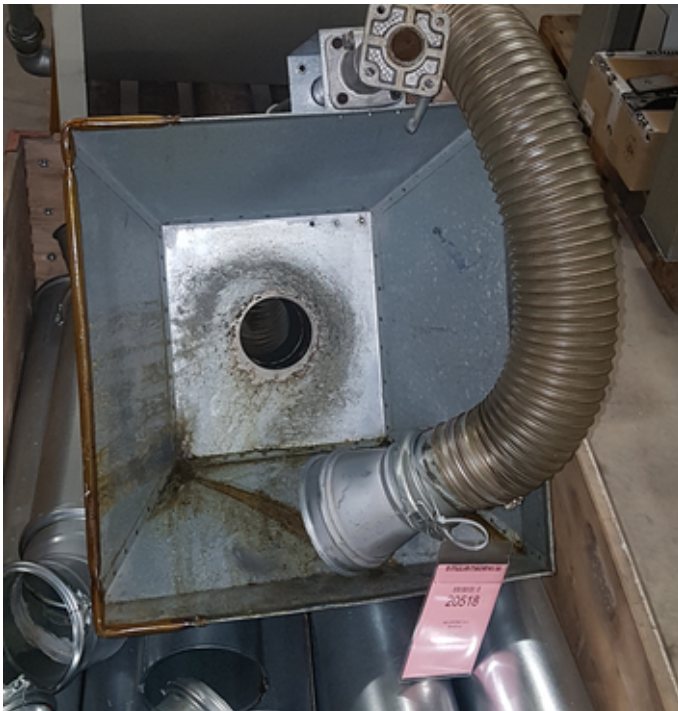


Spindle speeds  
 Aspirated air  
 Voltage 50 Hz 3x  
 Driving motor (motor power)  
 Dimensions:  
 Length  
 Width  
 Height

2850 t/min  
 1000 m<sup>3</sup>/h  
 400 Volt  
 2 kW  
 1200 mm  
 800 mm  
 2300 mm



[www.mullermachines.ch](http://www.mullermachines.ch)



[www.mullermachines.ch](http://www.mullermachines.ch)

