

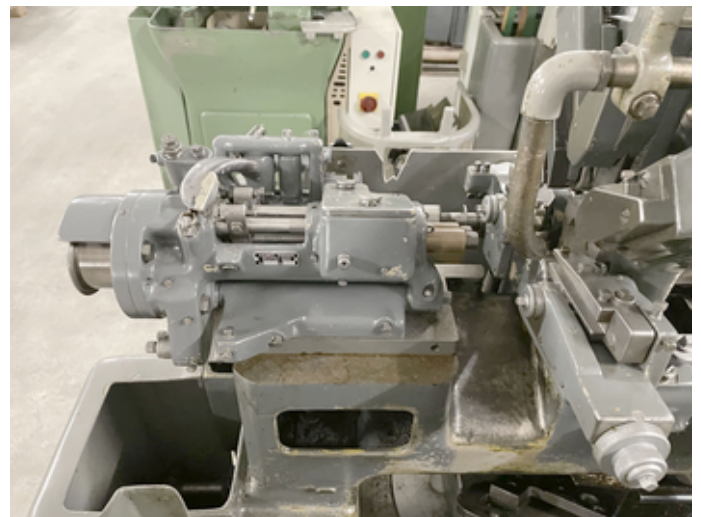
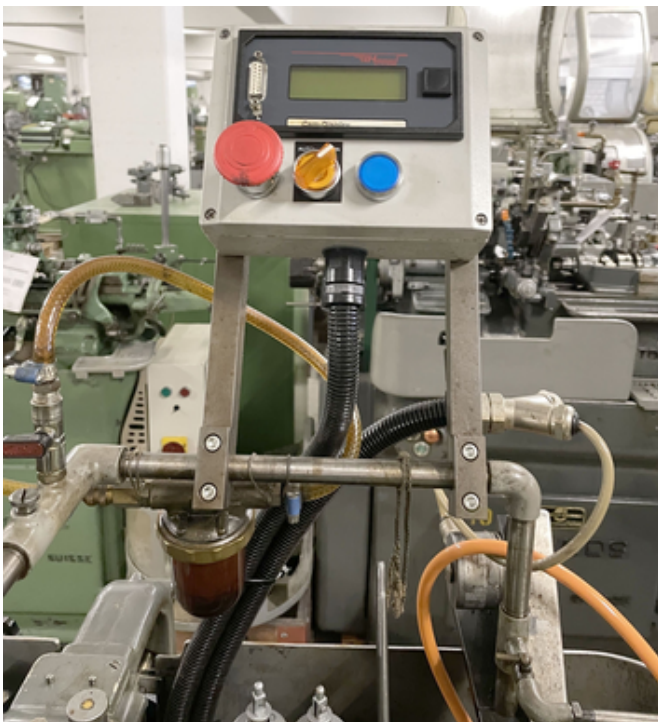
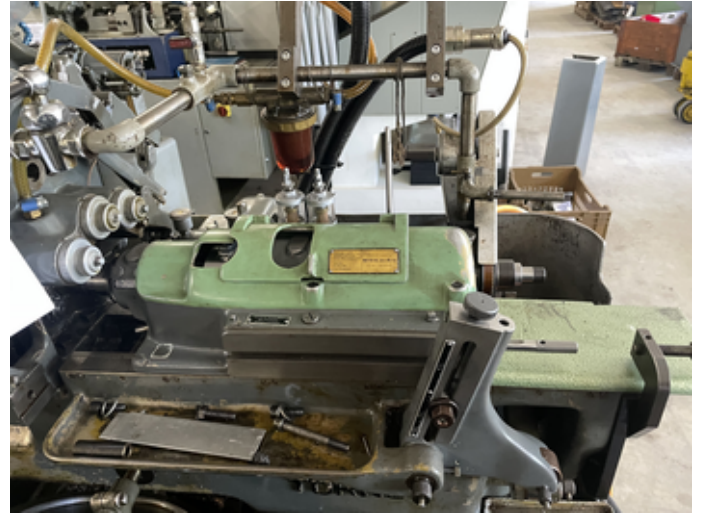
SAM 022072**TORNOS Type R 10**

Group Automatic lathe
Manufacturer TORNOS
Type R 10



Diameter of work admitted	10 mm
Max. turning length:	
with flat comes	70 mm
with bell comes	100 mm
Spindle hole	13 mm
Max. treading diameter	8 M
Number of tool cutters	5
Spindle speeds:	
Number of spindle speeds	20
from	1'050 t/min
up to	8000 t/min
Voltage 50 Hz 3x	380 Volt
Total power required	3 CV
Machine's weight about	860 kg
Overall dimensions machine:	
Length	1500 mm
Width	750 mm
Height	1450 mm

www.mullermachines.ch



www.mullermachines.ch

