

SAM 022229**VOUMARD Type 203 L6**

Group Internal grinding machine
Manufacturer VOUMARD
Type 203 L6



Min. internal grinding diameter	5 mm
Max. internal grinding diameter	120 mm
Grinding depth	160 mm
Centre height	130 mm
Workpiece spindle speeds:	
number (steps)	6
from	150 t/min
up to	1500 t/min
Max. angle	0 - 45 °
Spindle hole	30 mm
Grinding table travel:	
min.	2 mm
max	550 mm
Table speeds:	
stepless	
from	m/min
up to	20 m/min
Voltage 50 Hz 3x	380 Volt
Drive for internal grinding spindle	9 kW
Machine's weight about	1500 kg
Overall dimensions machine:	
Length	2200 mm
Width	1700 mm
Height	1800 mm

Various accessories:

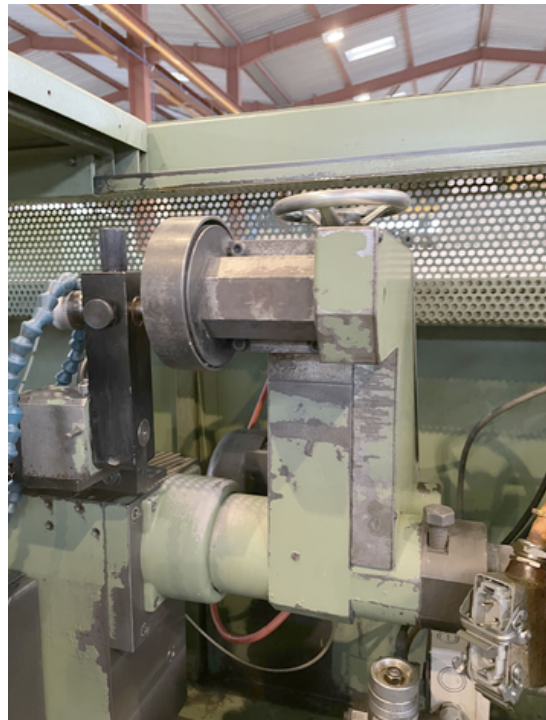
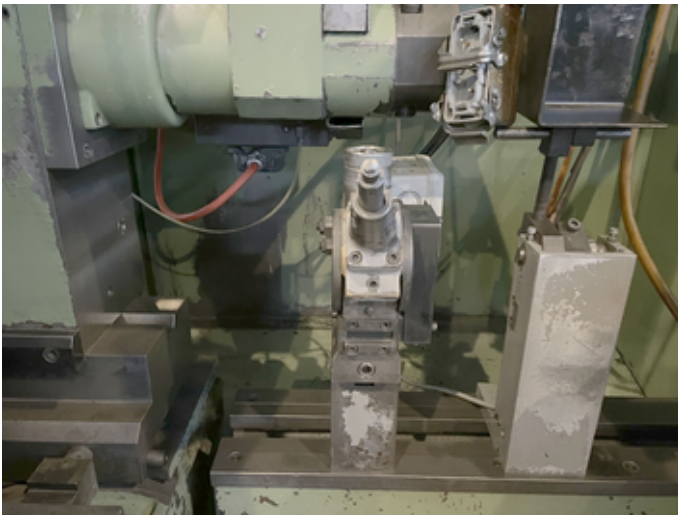
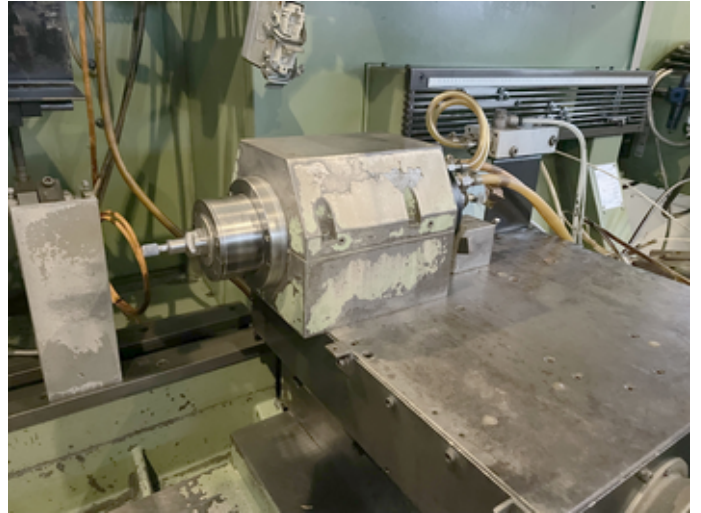
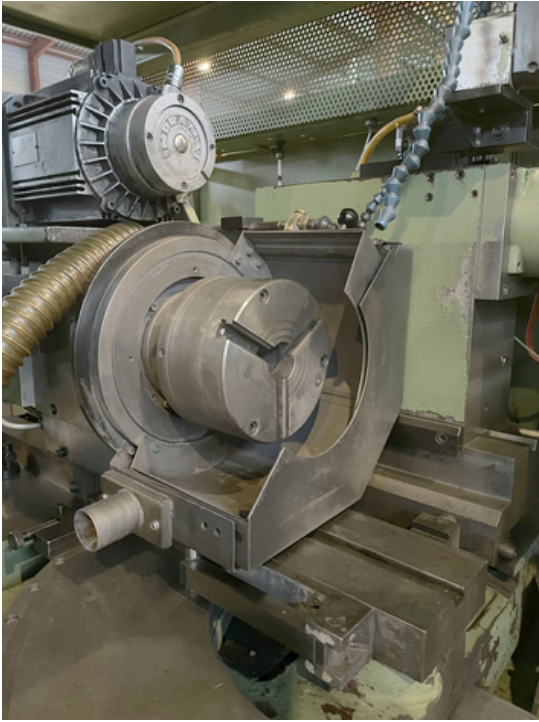
Face grinder	
Redressing device	
Front grinding device redresser	
3-jaw chuck	
Set of hard jaws	
Coolant system	
Paper filtration system	
Internal grinding spindle:	
numbers	2
max. speed	36000 t/min
max. speed	60000 t/min
Set of grinding arbor	
Three-jaw bezel folds open	
Lamp	

www.mullermachines.ch

Tool cabinet
Lathe chuck protection
Swivelling protection device



www.mullermachines.ch



www.mullermachines.ch



www.mullermachines.ch

