

**SAM 021475****SIP Type HYDROPTIC 6A**

<b>Group</b>	Jig boring machine
<b>Manufacturer</b>	SIP
<b>Type</b>	HYDROPTIC 6A
<b>Youtube video</b>	<a href="https://youtu.be/YYtkaDXgagM">https://youtu.be/YYtkaDXgagM</a>



Table length	1100 mm
Table width	842 mm
Table load max.	800 kg
Longitudinal travel (X-axis)	1000 mm
Transversal travel (y-axis)	795 mm
Vertical travel (z axis)	800 mm
Drill capacity in steel	55 mm
Taper in spindle: MT	4
Stroke of drilling spindle (Z-axis)	250 mm
Bore diameter max.	300 mm
Spindle speeds:	
number (steps)	18
from	40 t/min
up to	2000 t/min
Feeds:	
Table:	
stepless	
up to	300 mm/min
Drill spindle slide:	
number (steps)	6
from	mm/t
up to	mm/t
Rapid traverse:	
Table:longitudinal	2500 mm/min
transversal from	2500 mm/min
Distance between columns	1100 mm
Distance between spindle and table	900 mm
Voltage 50 Hz 3x	380 Volt
Spindle motor	4 CV
Total power required	8 CV
Machine's weight about	7500 kg
Overall dimensions machine:	
Length	3220 mm
Width	2335 mm
Height	3205 mm

**Various accessories:**

Slide way reshaved  
 Digital readout number of axis:

[www.mullermachines.ch](http://www.mullermachines.ch)

HEIDENHAIN

Manufacturer  
Set of boring head  
Centering device  
Screen

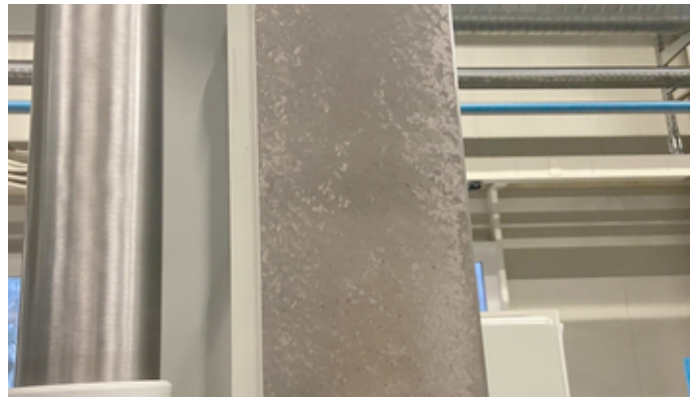
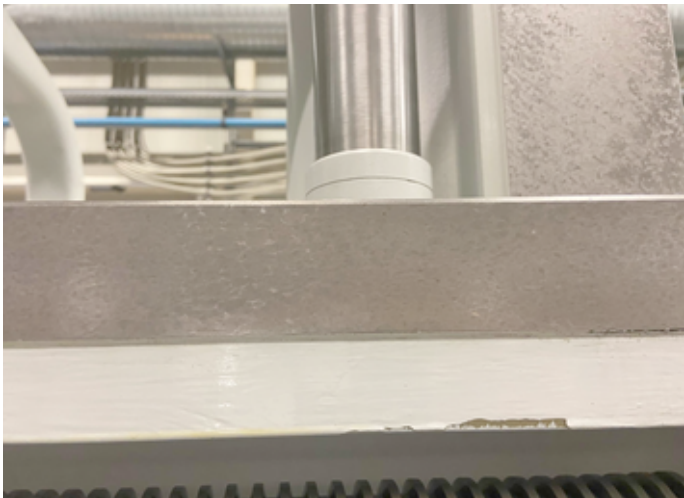
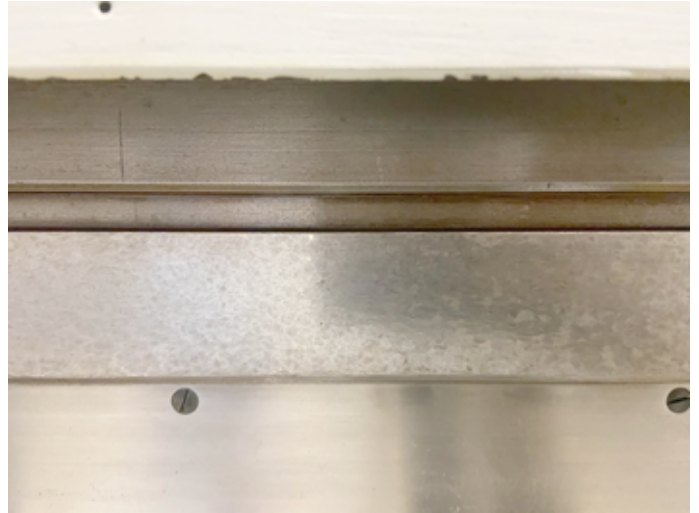
**Notes:**

Machine refurbished

2020



[www.mullermachines.ch](http://www.mullermachines.ch)



[www.mullermachines.ch](http://www.mullermachines.ch)



[www.mullermachines.ch](http://www.mullermachines.ch)

