

SAM 020677**TRAUB Type TNL 18P**

Group	CNC automatic lathe / CNC Swiss type lathe	
Manufacturer	TRAUB	
Type	TNL 18P	
Controller CNC	TRAUB SYSTEM TX 8i-p	
Year	2011	
Number of axis total		7
Number of spindles		2
Turning length		180 mm
Number of axis total		
Max. bar diameter		20 mm
Collet device		F25
Spindle speeds:		
stepless		
up to		8000 t/min
Longitudinal travel (Z-axis)		205 mm
C axis (spindle,resolution)		°
Back spindle:		
up to		6400 t/min
C axis (spindle,resolution)		°
Turret slide:		
numbers		2
Upper turret head:		
number of tools		8
number of driven tools		8
Spindle speeds (turning tools)		12000 t/min
X axis		120 mm
Lower turret head:		
number of tools		7
number of driven tools		7
Spindle speeds (turning tools)		6400 t/min
X axis		120 mm
Z axis		250 mm
Y axis		-20 / +40 mm
Counter-operation:		
number of tools		7
number of driven tools		3
Voltage 50 Hz 3x		400 Volt
Spindle motor		2.2 / 3.7 kW
Power of back spindle		1.5 / 2.5 kW
Total power required		24 kVA
Machine's weight about		4000 kg
Overall dimensions machine:		
Length		2500 mm
Width		1460 mm
Height		2250 mm





www.mullermachines.ch

Various accessories:

Driven tools (number)

Toolholders

Set of toolholders

Set of quick change inserts

Bar feeder

Manufacturer

FMB

Type

minimag 20

Length of bars max.

4200 mm

Bar diameter

2 - 23 mm

Workpiece conveyor

Chip conveyor

High pressure coolant device

30 bar

Water cooler

Paper filtration system

Set of reducing bushes

Tool Presetting block

Guide sleeve

Milling attachment

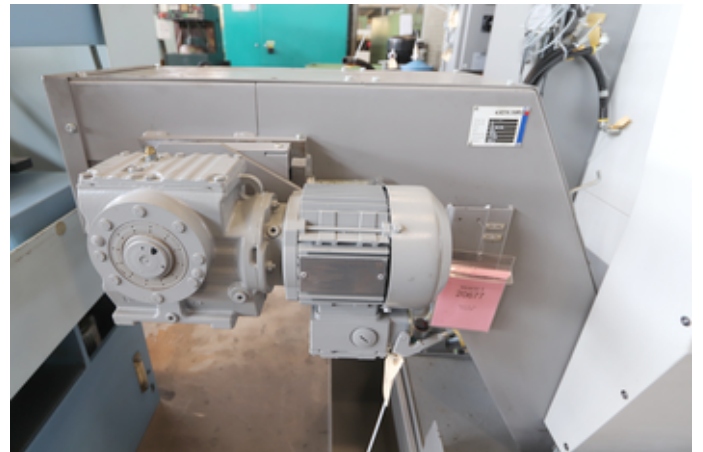
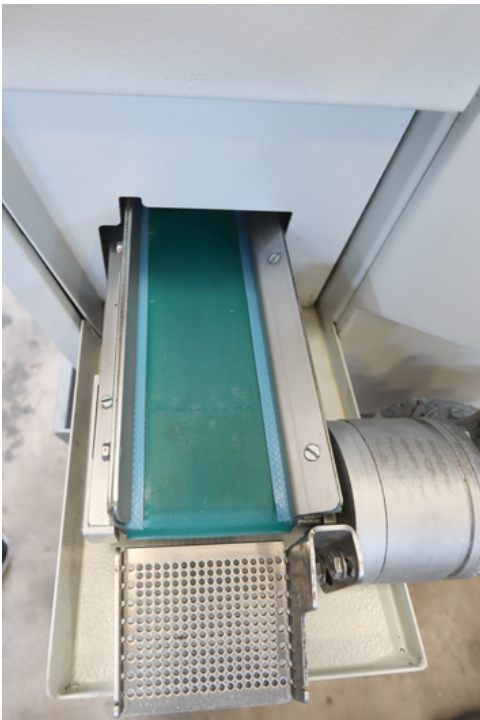
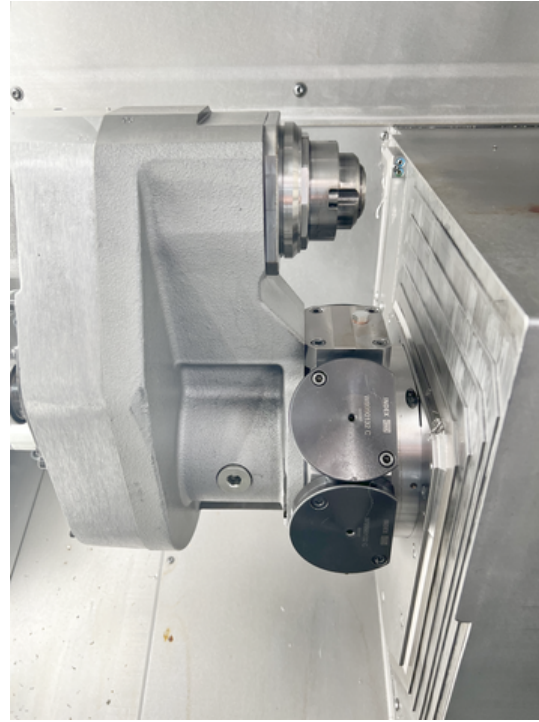
Lamp

Fire extinguishing system (without bottle)

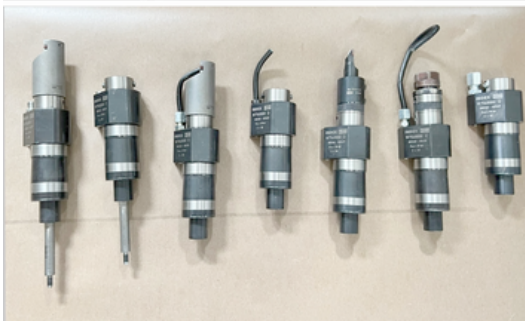
www.mullermachines.ch



www.mullermachines.ch



www.mullermachines.ch



www.mullermachines.ch

