

SAM 022953**HERMLE Type C 42 U**

| | |
|-----------------------|---|
| Group | 2 x 5-axis machining centres with loading robot |
| Manufacturer | HERMLE |
| Type | C 42 U |
| Controller CNC | HEIDENHAIN TNC 530 |
| Year | 2014 |



| | |
|-------------------------------------|----------|
| Number of axis total | 5 |
| Table length | 400 mm |
| Table width | 400 mm |
| Number of T-channels | 5 |
| T-channel width | 14H7 mm |
| Table load max. | 450 kg |
| Maximum swing circle of up to | 990 mm |
| Longitudinal travel (X-axis) | 800 mm |
| Transversal travel (y-axis) | 800 mm |
| Vertical travel (z axis) | 550 mm |
| Swivel angle (a-axis) | +/-130 ° |
| Table speed | 30 t/min |
| Pallets chancing device: | |
| numbers | 30 |
| Length | 400 mm |
| Width | 400 mm |
| Tool changer: | |
| Tool magazine number of tool places | 42 |

Addet tool-holder magazine

| | |
|-----------------------------|-------------|
| Number of tools | 160 |
| Spindle nose: HSK-A | 63 |
| Spindle speeds: | |
| stepless | |
| from | 0 t/min |
| up to | 18000 t/min |
| Rapid traverse: long. | 45 m/min |
| Rapid traverse: transversal | 45 m/min |
| Rapid traverse: vertical | 40 m/min |
| Air connect | 6 bar |
| Voltage 50 Hz 3x | 400 Volt |
| Spindle power | 42 kW |
| Torque max. | 148 Nm |
| Total power required | 37 kVA |
| Machine's weight about | 12500 kg |
| Overall dimensions machine: | |
| Length | 16000 mm |
| Width | 7000 mm |
| Height | 3500 mm |

www.mullermachines.ch

Various accessories:

| | |
|-----------------------------------|--------|
| Addet tool-holder magazine | |
| Number of tool places | 160 |
| Pallet station (number of spaces) | 54 |
| Loading roboter | KUKA |
| Coolant through spindle (cts) | 80 bar |
| Air blast through milling spindle | |
| Paper filtration system | |
| Measuring feeler gauge Renishaw | |
| Workpiece measurement | BLUM |
| Tool break control | BLUM |
| Chip conveyor | |
| NC Rotary and swiveling table | |
| Oil mist extractor | |
| Rotating viewing window | |
| Automatic sliding door | |
| Interface serial port RS 232 | |
| Interface Ethernet | |
| Interface USB | |
| Switch cabinet Air conditioner | |

Notes:

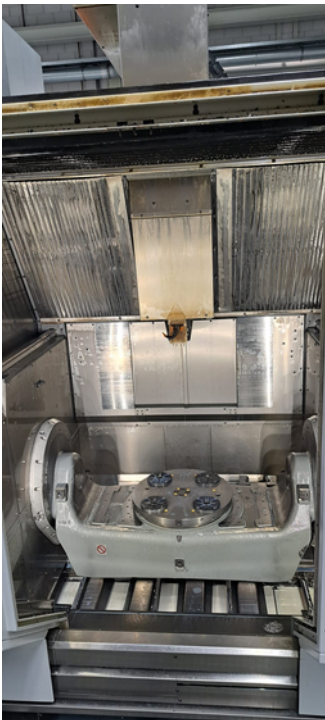
without tool holders

2 machines C42U including loading robot

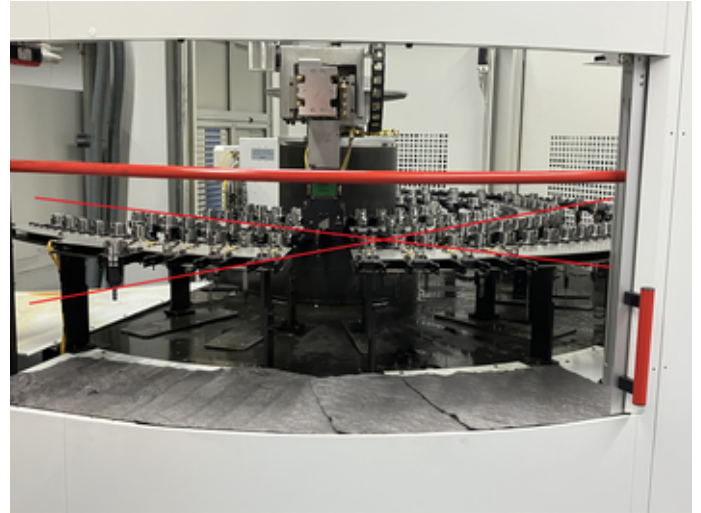
Spindle replacement on Machine 1 in May 2023 at 36,000 hours -> currently approx. 27,000 hours

Spindle replacement on Machine 2 in April 2018 at 19,000 hours -> currently approx. 5,000 hours

www.mullermachines.ch



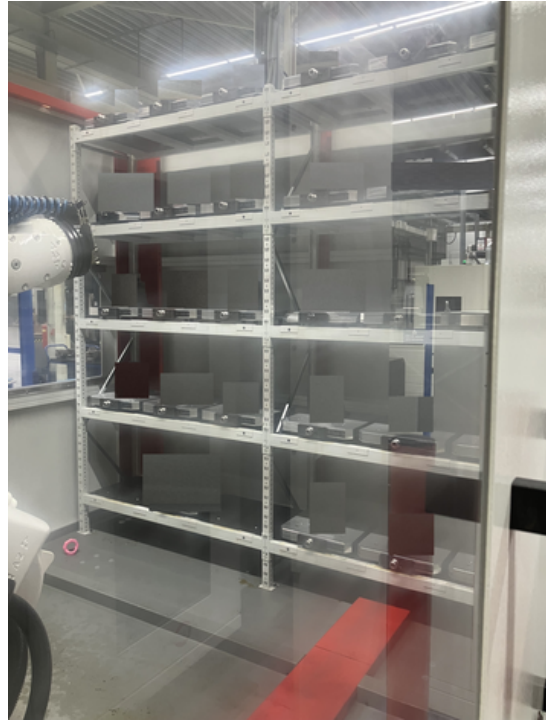
www.mullermachines.ch



www.mullermachines.ch



www.mullermachines.ch



www.mullermachines.ch

