

SAM 012390**SCHÜTTE Type SF 26**

Group Multi-spindle turning lathe
Manufacturer SCHÜTTE
Type SF 26

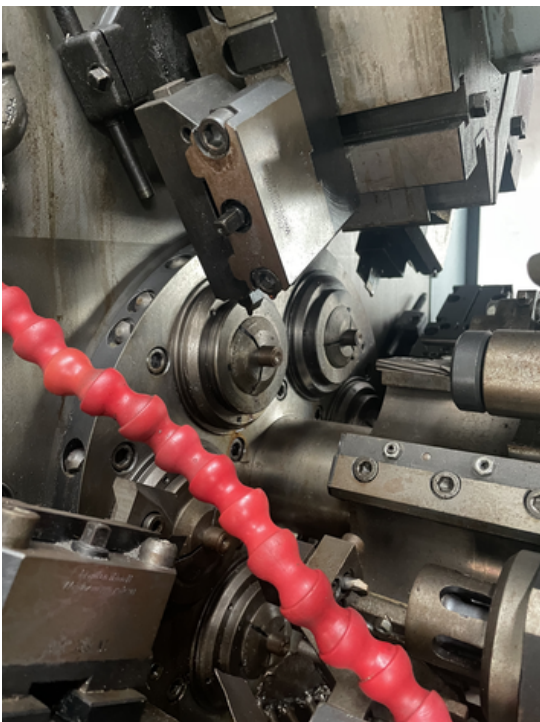
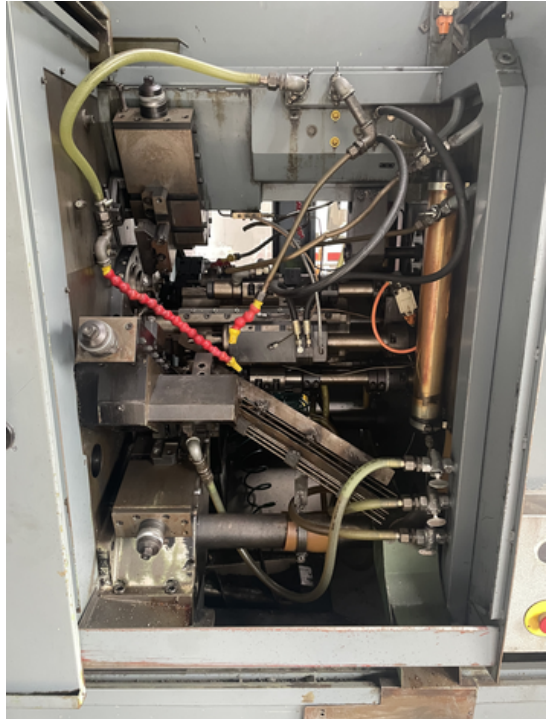


| | |
|-----------------------------|--------------|
| Number of spindles | 6 |
| Capacity round bar | 26 mm |
| Max. advance of bar | 80 mm |
| Max. turning length | 40 mm |
| Max. stroke of long slide | 63 / 39,6 mm |
| Number of possible pieces | 31 |
| Machining rate: | |
| from | s |
| up to | 95 s |
| Spindle speeds: | |
| from | 355 t/min |
| up to | 5000 t/min |
| Voltage 50 Hz 3x | 380 Volt |
| Power | 15 kW |
| Machine's weight about | 4000 kg |
| Overall dimensions machine: | |
| Length | 3125 mm |
| Width | 1030 mm |
| Height | 2000 mm |

Various accessories:

| | |
|---------------------------|---|
| Bar feeder | |
| Longitudinal slide number | 2 |
| Tool break control | |
| Back working unit | |

www.mullermachines.ch



www.mullermachines.ch

