

SAM 012396**SCHÜTTE Type SF 26**

Group Multi-spindle turning lathe
Manufacturer SCHÜTTE
Type SF 26

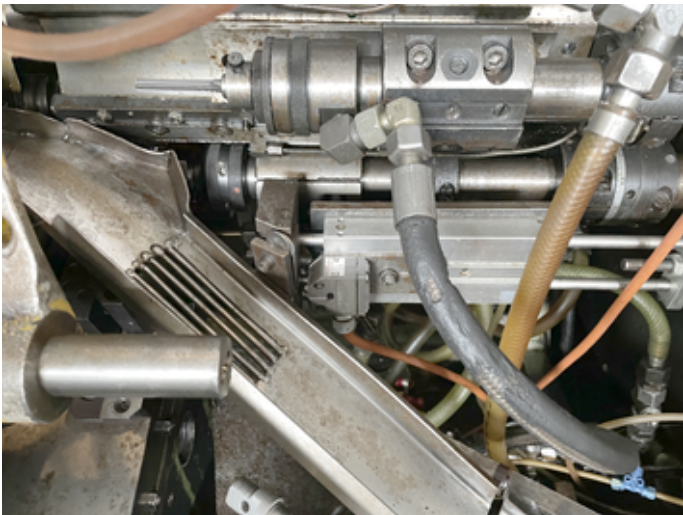
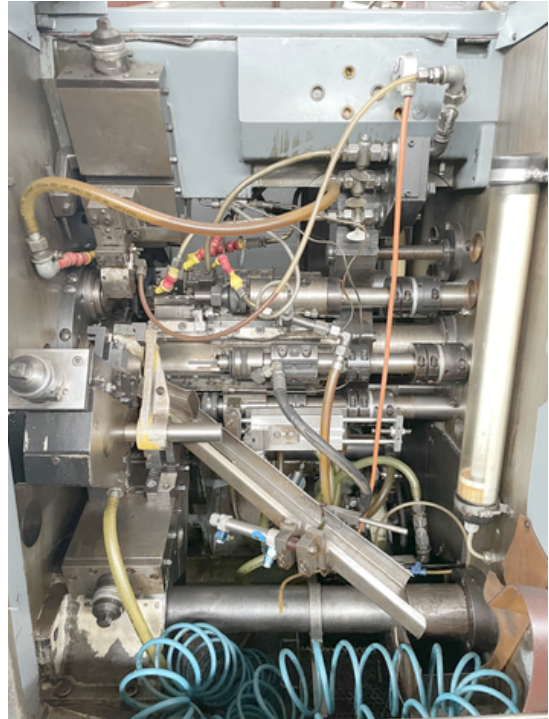


| | |
|-----------------------------|--------------|
| Number of spindles | 6 |
| Capacity round bar | 26 mm |
| Max. advance of bar | 80 mm |
| Max. turning length | 40 mm |
| Max. stroke of long slide | 63 / 39.6 mm |
| Number of possible pieces | 31 |
| Machining rate: | |
| from | s |
| up to | 95 s |
| Spindle speeds: | |
| from | 355 t/min |
| up to | 5000 t/min |
| Voltage 50 Hz 3x | 380 Volt |
| Power | 15 kW |
| Machine's weight about | 4000 kg |
| Overall dimensions machine: | |
| Length | 3125 mm |
| Width | 1030 mm |
| Height | 2000 mm |

Various accessories:

| | |
|---|------------------|
| Automatic bar loader (num. bars) | IEMCA PRA 40/33P |
| Coolant system | |
| Thread rolling attachment | 1 x |
| Longitudinal slide number | 2 |
| Drilling unit with independent feed | 6 x |
| Appareil à rouler les filôts à commande mécanique | |
| Tool break control | |
| Turret number of tools | 6 x |
| Threading attachment | tangent. |

www.mullermachines.ch



www.mullermachines.ch

