

SAM 009964**SCHÜTTE Type SF 42**

Group Multi-spindle turning lathe
Manufacturer SCHÜTTE
Type SF 42

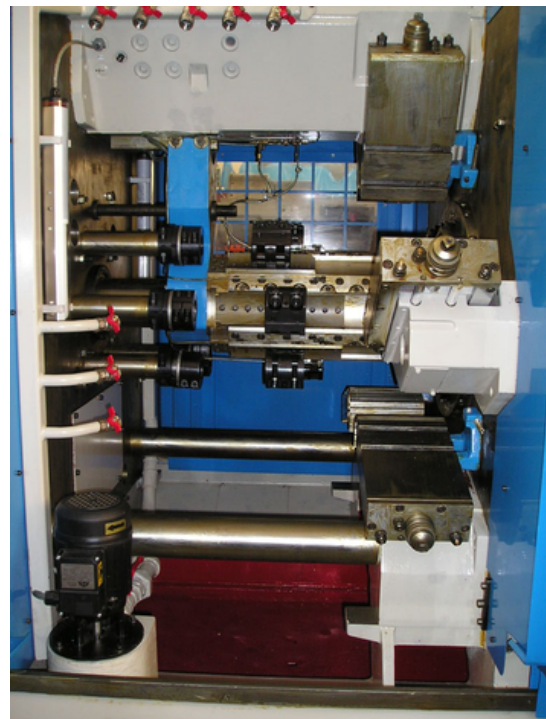
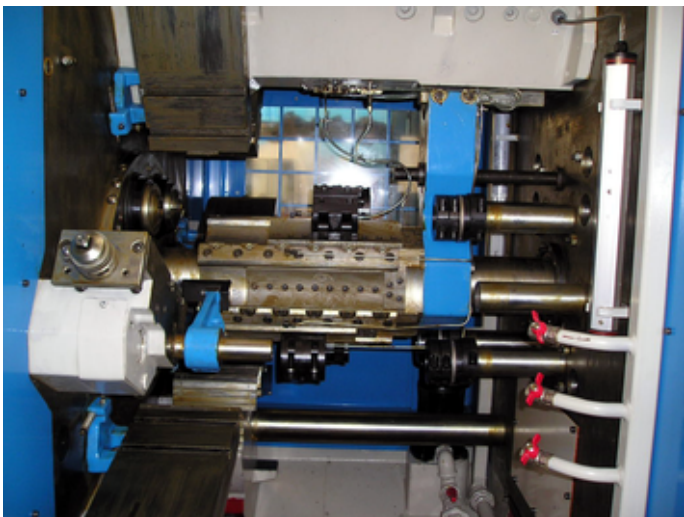


Number of spindles	6
Capacity round bar	42 mm
Capacity square bar	30 mm
Capacity hexagon bar	36 mm
Max. stroke of long slide	125 mm
Machining rate:	
from	1 s
up to	280 s
Spindle speeds:	
number (steps)	49
from	315 t/min
up to	2240 t/min
Voltage 50 Hz 3x	380 Volt
Power	22 kW
Machine's weight about	10000 kg
Overall dimensions machine:	
Length	6500 mm
Width	1400 mm
Height	2100 mm

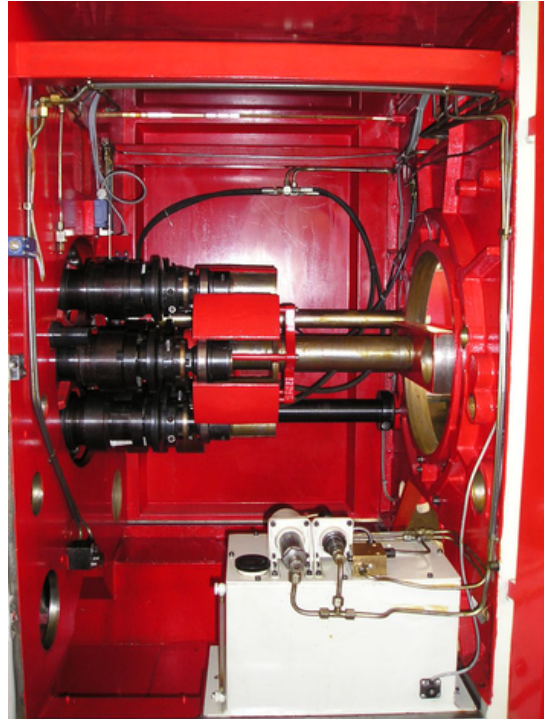
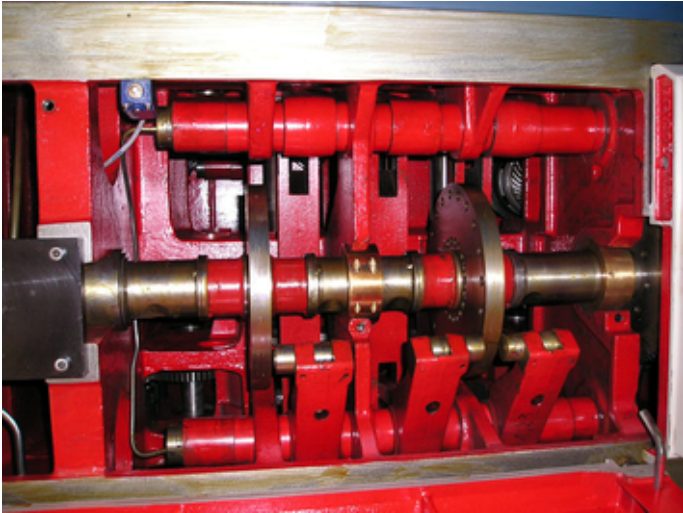
Various accessories:

Bar feeder
 Chip conveyor

www.mullermachines.ch



www.mullermachines.ch



www.mullermachines.ch

